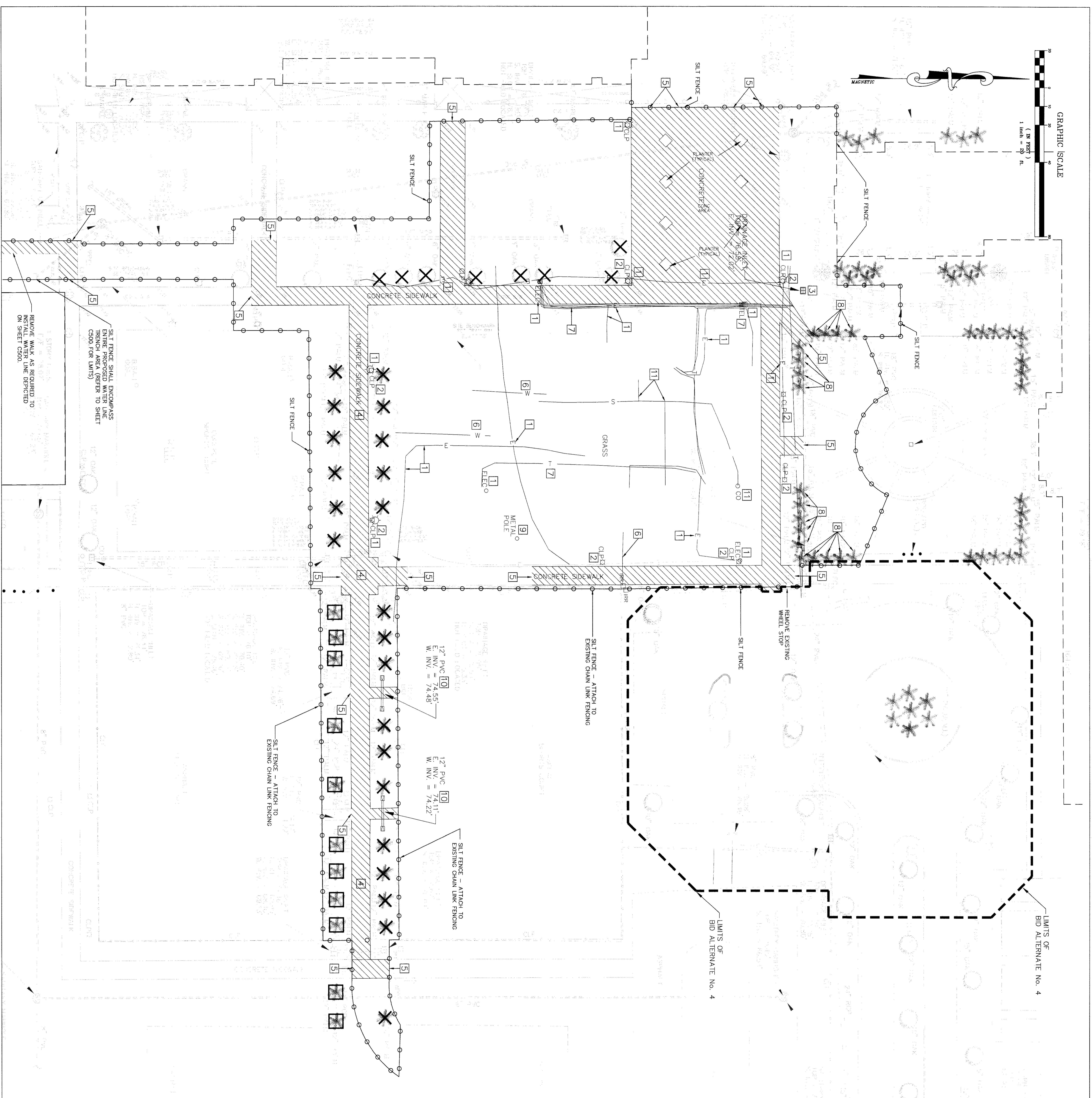


GRAPHIC SCALE
1" = 20' (AS SHOWN)
1" = 20' ft



DEMOLITION LEGEND

- SILT FENCE
- ✕ TREES TO BE REMOVED
- TREE BARRIER
- ▨ LIMITS OF CONCRETE WALKS, DRIVES, ASPHALT PAVEMENT, LIGHTS, BASE AND CURBS TO BE REMOVED (SAWCUT AT ALL EXISTING EDGES TO REMAIN).
- 1 REMOVE AND/OR RELOCATE EXISTING UNDERGROUND ELECTRIC LINE AS REQUIRED FOR NEW BUILDING ADDITION. REFER TO COMPANY.
- 2 REMOVE EXISTING LIGHT POLE AND ASSOCIATED ELECTRICAL. REFER TO ELECTRICAL PLANS AND COORDINATE WITH LOCAL ELECTRIC COMPANY.
- 3 REMOVE EXISTING STORM STRUCTURE.
- 4 REMOVE & REPLACE EXISTING SIDEWALK. REFER TO SHEET C400.
- 5 SAWCUT EXISTING CONCRETE/ASPHALT.
- 6 REMOVE/REROUTE EXISTING IRRIGATION LINE. REFER TO LANDSCAPE/IRRIGATION PLANS.
- 7 REMOVE AND/OR RELOCATE EXISTING PHONE/CABLE UNDERGROUND LINES AS REQUIRED FOR NEW BUILDING ADDITION. REFER TO ELECTRICAL/COMMUNICATION PLANS AND COORDINATE WITH LOCAL PHONE/CABLE COMPANY.
- 8 EXISTING PALMS TO BE SALVAGED. REFER TO LANDSCAPE PLANS FOR TEMPORARY AND PERMANENT PLACEMENT.
- 9 REMOVE EXISTING METAL POLE.
- 10 REMOVE EXISTING STORM MITERED END SECTIONS (MES) & ASSOCIATED PIPING.
- 11 CONFIRM LINE IS INACTIVE PRIOR TO REMOVAL.

DEMOLITION NOTES

1. STORM SEWER LINES IN ALL BUILDING AND PAVEMENT AREAS SHALL BE DEMOLISHED, REMOVED FROM SITE, AND DISPOSED IN AN APPROVED WASTE DISPOSAL AREA. ALL OTHER UTILITIES SHALL BE DEMOLISHED AND REMOVED OR LEFT IN PLACE AS REQUIRED BY THE UTILITY DEPARTMENT. LOCAL REQUIREMENTS AND THE HEALTH DEPARTMENT. ANY CONDUITS THAT ARE LEFT IN PLACE SHALL HAVE ENDS SEALED WITH LEAN CONCRETE.
2. "BUILDING AREAS" SHALL BE CLEANED OF ALL EXISTING PAVEMENT, BUILDING SLABS, FOOTINGS, FOUNDATIONS, UTILITIES AND SEWERS. NO EXISTING IMPROVEMENTS SHALL BE LEFT UNDER PROPOSED BUILDING AREAS.
3. ALL AREAS WHERE PAVEMENT, BUILDING SLABS, FOUNDATIONS, UTILITIES, CONDUITS, AND/OR UTILITY STRUCTURES HAVE BEEN REMOVED SHALL BE RECONSTRUCTED TO ORIGINAL OR BETTER CONDITION. ALL AREAS SHALL BE RECONSTRUCTED TO ORIGINAL OR BETTER CONDITION. ALL AREAS SHALL BE RECONSTRUCTED TO ORIGINAL OR BETTER CONDITION.
4. MATERIAL SHALL BE PLACED AND COMPACTED PER THE REQUIREMENTS OF THE SPECIFICATIONS AND THE ON-SITE GEOTECHNICAL ENGINEER.
5. COORDINATE DEMOLITION OF ALL UTILITIES WITH CONSTRUCTION OF NEW UTILITIES SUCH THAT UTILITY SERVICE IS NOT INTERRUPTED WHILE FACILITIES ARE IN USE AND FUNCTION OF STORM SYSTEM IS NOT IMPAIRED.
6. EXISTING UTILITIES TO REMAIN IN SERVICE ARE SHOWN WHERE DATA IS AVAILABLE (SURVEY, STICK-FILES, PREVIOUS CONSTRUCTION DOCUMENTS).

EROSION CONTROL NOTES

1. ALL EROSION AND SEDIMENT CONTROL WORK SHALL CONFORM TO STANDARDS OF OSCEOLA COUNTY, FLORIDA AND THE SOUTH FLORIDA WATER MANAGEMENT DISTRICT.
2. EROSION AND SEDIMENT CONTROL MEASURES ARE TO BE PLACED PRIOR TO, OR AS THE FIRST STEP IN, CONSTRUCTION. SEDIMENT CONTROL PRACTICES WILL BE APPLIED AS A PERIMETER DEFENSE AGAINST ANY TRANSPORTATION OF SILT OFF THE SITE.
3. SOIL MATERIALS FROM WORK ON THIS PROJECT SHALL BE CONTAINED AND NOT ALLOWED TO COLLECT ON ANY OFF-PREMISE AREAS OR IN WATERWAYS. THESE INCLUDE BOTH NATURAL AND MAN-MADE OPEN DITCHES, STORM DRAINAGE CHANNELS, AND OTHER WATERWAYS.
4. STORM DRAINAGE CHANNELS SHALL BE MAINTAINED BY THE CONTRACTOR TO DETERMINE THE EFFECTIVENESS OF EROSION/SEDIMENT CONTROL EFFORTS. ANY NECESSARY REPAIRS SHALL BE PERFORMED WITHOUT DELAY.
5. ALL MUD, DIRT, OR OTHER MATERIALS TRACKED OR SPILLED ONTO EXISTING PUBLIC OR PRIVATE ROADS AND FACILITIES FROM THIS SITE, DUE TO CONSTRUCTION, SHALL BE PROMPTLY REMOVED BY THE CONTRACTOR.
6. ALL PERMANENT EROSION CONTROL MEASURES FOR ALL SLOPES, CHANNELS AND ANY DISTURBED LAND AREAS SHALL BE COMPLETED WITHIN 15 DAYS OF THE END OF CONSTRUCTION.
7. ALL TEMPORARY PROTECTION SHALL BE MAINTAINED UNTIL PERMANENT MEASURES ARE IN PLACE AND ESTABLISHED.
8. THE EROSION CONTROL MEASURES ARE INTENDED AS MINIMUM STANDARDS. ANY EROSION CONTROL REQUIRED BEYOND THAT SPECIFIED SHALL BE CONSIDERED AS INCLUDED WITHIN THIS CONTRACT.
9. THE CONTRACTOR IS RESPONSIBLE TO PREPARE AND SUBMIT THE REQUIRED EROSION CONTROL PLAN AND NOTI. ALL FEES ASSOCIATED WITH THIS SUBMITTAL ARE ALSO THE RESPONSIBILITY OF THE CONTRACTOR.

SCHENKEL SHULTZ
200 east Robinson Street
Suite 300
Tallahassee, Florida 32301
Phone: 904-782-3222
Fax: 904-782-3803
schenkelshultz.com

Klima Weeks
CERTIFIED CONTRACTORS
Certificate of Authorization No. 9290



Poinciana High School Auditorium
for the school district of Osceola County, Florida
800 bill back boulevard
Kissimmee, Florida 34774

date: K/VZ
checked: SGW
date: 04/04/08
comm. no.: 08200104

EROSION CONTROL & DEMOLITION PLAN

C101

CONFORMED DOCUMENTS