

Poinciana High School Auditorium
 2000 S. Poinciana Blvd.
 Kissimmee, Florida 34758

The School District of Osceola County
 809 Bill Beck Blvd.
 Kissimmee, Florida 34744

Prepared by:
 Date: 04/04/08
 Drawn by: 000000
 Check by: 000000
 Scale: AS SHOWN

LIGHTING DETAILS,
 CONTROLS &
 SCHEDULE

E104

CONFIRMED DOCUMENTS

DC1 - ETC DIMMING CONTROL SCHEDULE

PANEL-RELAY #	MODULE TYPE	DESCRIPTION	LOAD (KVA)
DC1-1	R20	AISLE LIGHTS	0.20
DC1-2	R20	AISLE LIGHTS	0.20
DC1-3	R20	AISLE LIGHTS	0.20
DC1-4	R20	AISLE LIGHTS	0.20
DC1-5	D20	LED STEP LIGHT	0.20
DC1-6	D20F	LIGHT BARS DOWN LIGHTING	0.20
DC1-6	D20F	AUDITORIUM DOWN LIGHTING	0.30
DC1-8	D20F	AUDITORIUM DOWN LIGHTING	0.30
DC1-9	D20F	AUDITORIUM DOWN LIGHTING	0.30
DC1-10	D20F	AUDITORIUM DOWN LIGHTING	0.30
DC1-11	D20F	AUDITORIUM DOWN LIGHTING	0.30
DC1-12	D20F	AUDITORIUM DOWN LIGHTING	0.30
DC1-13	D20F	AUDITORIUM DOWN LIGHTING	0.30
DC1-14	D20F	AUDITORIUM DOWN LIGHTING	0.30
DC1-15	D20F	AUDITORIUM DOWN LIGHTING	0.30
DC1-16	D20F	AUDITORIUM DOWN LIGHTING	0.30
DC1-18	D20	1ST ELECTRIC - ABOVE STAGE	1.40
DC1-19	D20	1ST ELECTRIC - ABOVE STAGE	0.75
DC1-20	D20	1ST ELECTRIC - ABOVE STAGE	0.75
DC1-21	D20	1ST ELECTRIC - ABOVE STAGE	0.75
DC1-21	D20	1ST ELECTRIC - ABOVE STAGE	0.75
DC1-22	D20	1ST ELECTRIC - ABOVE STAGE	0.75
DC1-24	D20	1ST ELECTRIC - ABOVE STAGE	0.75
DC1-25	D20	1ST ELECTRIC - ABOVE STAGE	0.75
DC1-25	D20	1ST ELECTRIC - ABOVE STAGE	0.75
DC1-26	D20	1ST ELECTRIC - ABOVE STAGE	0.75
DC1-28	D20	1ST ELECTRIC - ABOVE STAGE	0.75
DC1-29	D20	2ND ELECTRIC - ABOVE STAGE	1.40
DC1-30	D20	2ND ELECTRIC - ABOVE STAGE	0.75
DC1-32	D20	2ND ELECTRIC - ABOVE STAGE	0.75
DC1-33	D20	2ND ELECTRIC - ABOVE STAGE	0.75
DC1-34	D20	2ND ELECTRIC - ABOVE STAGE	0.75
DC1-35	D20	2ND ELECTRIC - ABOVE STAGE	0.75
DC1-37	D20	2ND ELECTRIC - ABOVE STAGE	0.75
DC1-38	D20	2ND ELECTRIC - ABOVE STAGE	0.75
DC1-39	D20	2ND ELECTRIC - ABOVE STAGE	0.75
DC1-40	D20	2ND ELECTRIC - ABOVE STAGE	0.75
DC1-42	D20	2ND ELECTRIC - ABOVE STAGE	1.40
DC1-43	D20	3RD ELECTRIC - ABOVE STAGE	0.75
DC1-44	D20	3RD ELECTRIC - ABOVE STAGE	0.75
DC1-45	D20	3RD ELECTRIC - ABOVE STAGE	0.75
DC1-47	D20	3RD ELECTRIC - ABOVE STAGE	0.75
DC1-48	D20	3RD ELECTRIC - ABOVE STAGE	0.75
DC1-49	D20	3RD ELECTRIC - ABOVE STAGE	0.75
DC1-50	D20	3RD ELECTRIC - ABOVE STAGE	0.75
DC1-52	D20	3RD ELECTRIC - ABOVE STAGE	0.75
DC1-53	D20	4TH ELECTRIC - ABOVE STAGE	1.40
DC1-54	D20	4TH ELECTRIC - ABOVE STAGE	0.75
DC1-55	D20	4TH ELECTRIC - ABOVE STAGE	0.75
DC1-57	D20	4TH ELECTRIC - ABOVE STAGE	0.75
DC1-58	D20	4TH ELECTRIC - ABOVE STAGE	0.75
DC1-60	D20	4TH ELECTRIC - ABOVE STAGE	0.75
DC1-61	D20	4TH ELECTRIC - ABOVE STAGE	0.75
DC1-62	D20	4TH ELECTRIC - ABOVE STAGE	0.75
DC1-63	D20	4TH ELECTRIC - ABOVE STAGE	0.75
DC1-64	D20	4TH ELECTRIC - ABOVE STAGE	0.75
DC1-66	D20	PIPE MOUNT OUTLET - AT CATAWALK	0.75
DC1-67	D20	PIPE MOUNT OUTLET - AT CATAWALK	0.75
DC1-68	D20	PIPE MOUNT OUTLET - AT CATAWALK	0.75
DC1-69	D20	PIPE MOUNT OUTLET - AT CATAWALK	0.75
DC1-71	D20	PIPE MOUNT OUTLET - AT CATAWALK	0.75
DC1-72	D20	PIPE MOUNT OUTLET - AT CATAWALK	0.75
DC1-73	D20	PIPE MOUNT OUTLET - AT CATAWALK	0.75
DC1-74	D20	PIPE MOUNT OUTLET - AT CATAWALK	0.75
DC1-76	D20	PIPE MOUNT OUTLET - AT CATAWALK	0.75
DC1-77	D20	PIPE MOUNT OUTLET - AT CATAWALK	0.75
DC1-78	D20	PIPE MOUNT OUTLET - AT CATAWALK	0.75
DC1-79	D20	PIPE MOUNT OUTLET - AT CATAWALK	0.75
DC1-80	D20	PIPE MOUNT OUTLET - AT CATAWALK	0.75
DC1-81	D20	PIPE MOUNT OUTLET - AT CATAWALK	0.75
DC1-82	D20	PIPE MOUNT OUTLET - AT CATAWALK	0.75
DC1-83	D20	PIPE MOUNT OUTLET - AT CATAWALK	0.75
DC1-84	D20	PIPE MOUNT OUTLET - AT CATAWALK	0.75
DC1-85	D20	PIPE MOUNT OUTLET - AT CATAWALK	0.75
DC1-86	D20	PIPE MOUNT OUTLET - AT CATAWALK	0.75
DC1-88	D20	PIPE MOUNT OUTLET - AT CATAWALK	0.75
DC1-89	D20	PIPE MOUNT OUTLET - AT CATAWALK	0.75
DC1-90	D20	PIPE MOUNT OUTLET - AT CATAWALK	0.75
DC1-91	D20	PIPE MOUNT OUTLET - AT CATAWALK	0.75
DC1-92	D20	PIPE MOUNT OUTLET - AT CATAWALK	0.75
DC1-93	D20	PIPE MOUNT OUTLET - AT CATAWALK	0.75
DC1-94	D20	PIPE MOUNT OUTLET - AT CATAWALK	0.75
DC1-95	D20	SPARE	0.50
DC1-96	D20	SPARE	0.50

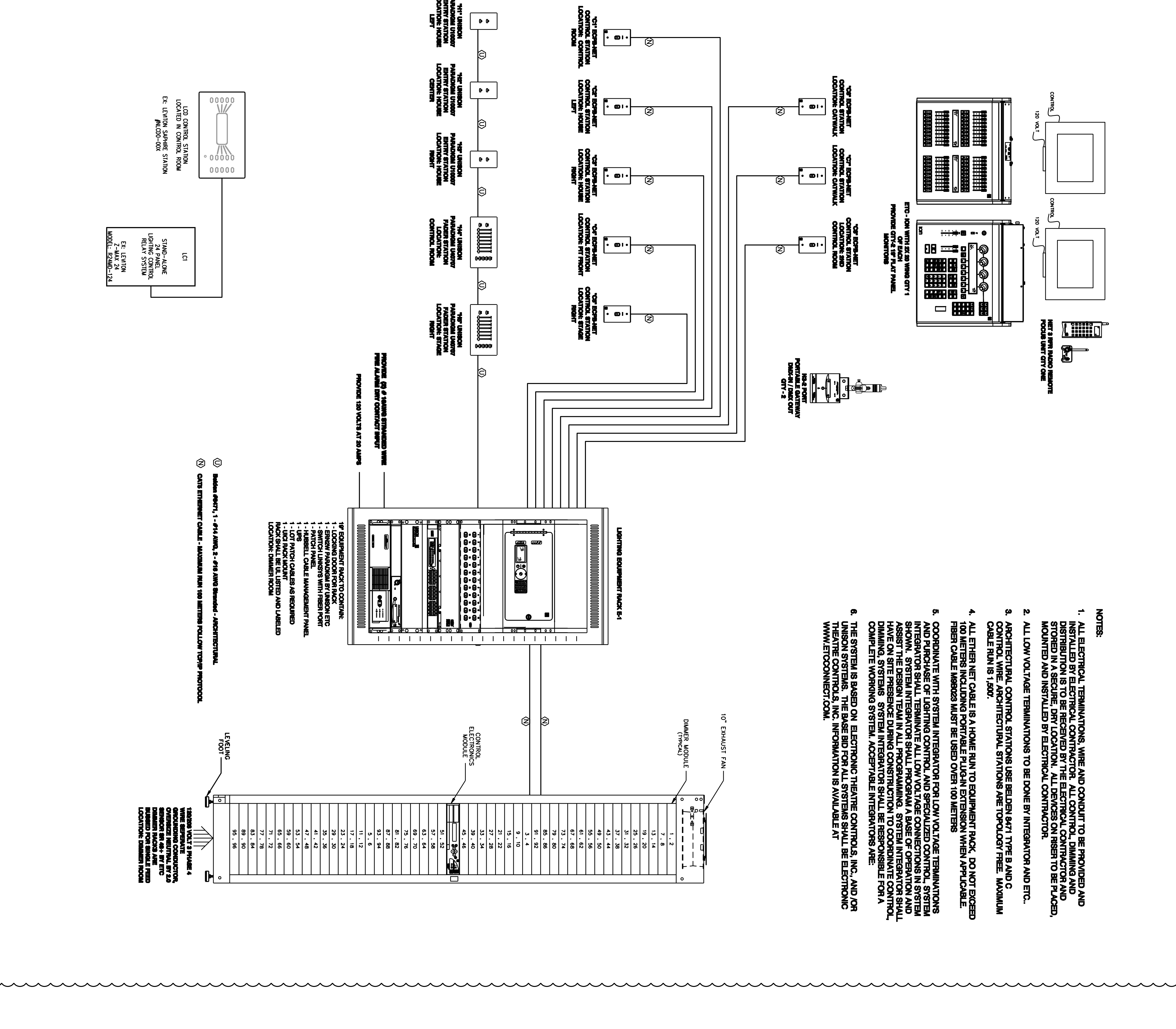
GENERAL LIGHTING CONTROL NOTES:
 100% 120V 20A (2) CHANNEL UNIVERSAL DIMMER MODULE WITH 300V CHORD
 100% 120V 20A (2) CHANNEL FLUORESCENT DIMMER MODULE
 100% 120V 20A (2) CHANNEL RELAY MODULE

LC1 - LIGHTING CONTROL RELAY SCHEDULE

PANEL-RELAY #	BRANCH Ckt #	RELAY TYPE	DESCRIPTION	LOAD (KVA)
LC1-1	H1-01	S	FRONT EXTERIOR LIGHTING	1.14
LC1-2	H1-02	D	CONGRESSION WASH	0.45
LC1-3	H1-03	D	LOBBY FLOOR CONTROL ROOM CANS	1.00
LC1-4	H1-05	D	LOBBY FLOOR CONTROL ROOM CANS	0.15
LC1-5	H1-05	D	LOBBY	1.00
LC1-6	H1-05	D	LOBBY	0.55
LC1-7	H1-07	S	EXTERIOR / CANOPY	1.90
LC1-8	H1-07	S	EXTERIOR / CANOPY	1.72
LC1-9	H1-09	D	LOBBY 2ND FLOOR CONTROL ROOM CANS	0.45
LC1-10	H1-09	S	OPEN CEILING LIGHTS	0.72
LC1-11	H1-09	S	LOBBY PENDANTS	0.36
LC1-12	-	S	SPARE	-

GENERAL LIGHTING CONTROL NOTES:
 SOME BRANCH CIRCUITS MAY SUPPLY MORE THAN ONE RELAY. PROVIDE NECESSARY TERMINAL BLOCKS IN SEPARATE ENCLOSURE FOR SPLICING AND DISTRIBUTION OF BRANCH CIRCUITS. SPACES ARE NOT PROVIDED WITHIN PANELS.
 S: SINGLE POLE 277V 20A
 D: FLUORESCENT DIMMING 0-10V IN ADDITION TO BRANCH SUPPLY

1 LIGHTING CONTROL & DIMMING SYSTEM RISER DIAGRAM



- NOTES:
- ALL ELECTRICAL TERMINATIONS, WIRE AND CONDUIT TO BE PROVIDED AND INSTALLED BY ELECTRICAL CONTRACTOR. ALL CONTROL, DIMMING AND DISTRIBUTION IS TO BE RECEIVED BY THE ELECTRICAL CONTRACTOR AND MOUNTED IN A SEPARATE JEM LOCATION. ALL DEVICES ON RISER TO BE PROTECTED AND INSTALLED BY ELECTRICAL CONTRACTOR.
 - ALL LOW VOLTAGE TERMINATIONS TO BE DONE BY INTEGRATOR AND ETC.
 - ARCHITECTURAL CONTROL STATIONS USE BREDER MAT TYPE B AND C CABLE RAIN IS 1/8001
 - ALL ETHER NET CABLE IS A HOME RUN TO EQUIPMENT RACK. DO NOT EXCEED 100 METERS INCLUDING PORTABLE PLUG-IN EXTENSION WHEN APPLICABLE. FIBER CABLE NETWORKS MUST BE USED OVER 100 METERS.
 - COORDINATE WITH SYSTEM INTEGRATOR FOR LOW VOLTAGE TERMINATIONS AND PURCHASE OF LIGHTING CONTROL AND SPECIALIZED CONTROLS IN SYSTEM INTEGRATOR SHALL TERMINATE ALL LOW VOLTAGE CONNECTIONS IN SYSTEM SHOW. SYSTEM INTEGRATOR SHALL PROGRAM A BASE OF OPERATION AND HAVE ON SITE PRESENCE DURING CONSTRUCTION TO COORDINATE ON SHOW DIMMING SYSTEMS. SYSTEM INTEGRATOR SHALL BE RESPONSIBLE FOR A COMPLETE WORKING SYSTEM, ACCEPTABLE INTEGRATIONS ARE:
 - THE SYSTEM IS BASED ON ELECTRONIC THEATRE CONTROLS, INC. AND FOR THEATRE CONTROLS, INC. INFORMATION IS AVAILABLE AT WWW.ETCONNECT.COM.

- 10\"/>

1\"/>
 - 1 - RENOVO MANAGER BY LANSBORN ETC
 - 1 - PATCH PANEL
 - 1 - HUBBELL CABLE MANAGEMENT PANEL
 - 1 - 120\"/>

1\"/>
 - 1 - 120\"/>