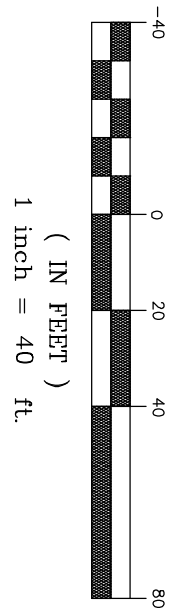
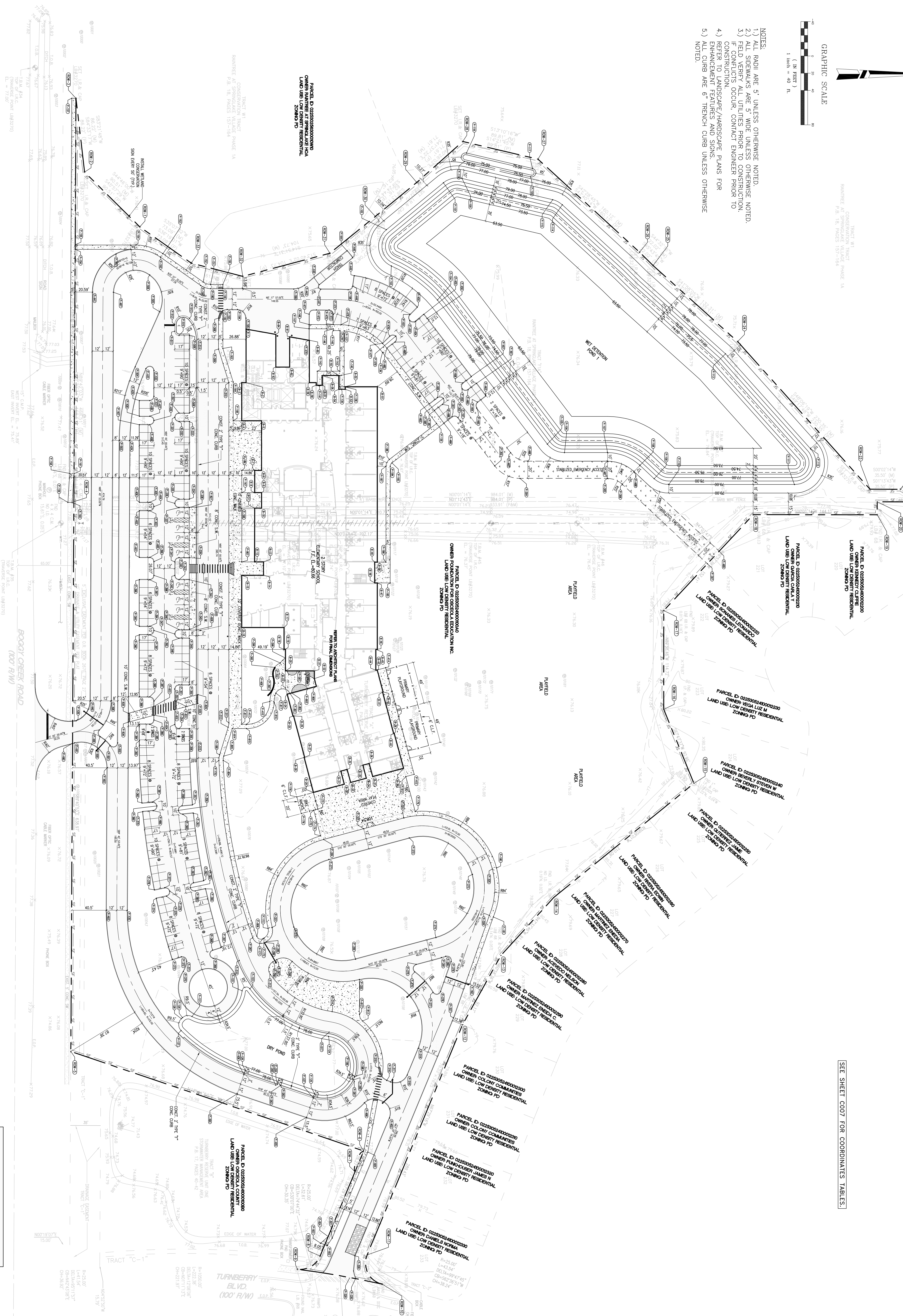




GRAPHIC SCALE



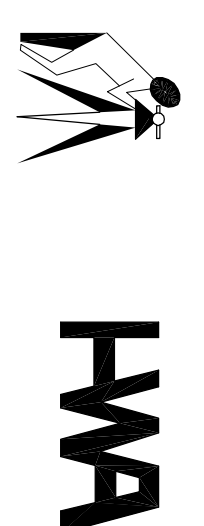
- NOTES:
- 1.) ALL RADI ARE 5' UNLESS OTHERWISE NOTED.
 - 2.) ALL SIDEWALKS ARE 5' WIDE UNLESS OTHERWISE NOTED.
 - 3.) FIELD VERIFY ALL UTILITIES PRIOR TO CONSTRUCTION. IF CONFLICTS OCCUR, CONTACT ENGINEER PRIOR TO CONSTRUCTION.
 - 4.) REFER TO LANDSCAPE/HARDSCAPE PLANS FOR ENHANCEMENT FEATURES AND SIGNS.
 - 5.) ALL CURBS ARE 6" TRENCH CURB UNLESS OTHERWISE NOTED.



SEE SHEET C007 FOR COORDINATES TABLES.

THESE PLANS HAVE BEEN REPRODUCED AT HALF SIZE

order#, 1132901
 voice 407-8723322
 fax 407-872-3303
 sopher@hwa.com
 SS Lic No - AA-C00937



403 W. EMMETT STREET
 MIAMI, FL 33135
 PHONE: (407) 847-9433
 ENGINEERING FAX: (321) 442-1045
 ENG. CERT. OF AUTHORITY No. 3285
 SUR. CERT. OF AUTHORITY No. 3270
 ENGINEERING, SURVEYING AND PLANNING
 Henson, Weller & Associates, I

BUMPUS AND ASSOCIATES, INC.
 REGISTERED PROFESSIONAL ENGINEER
 LICENSE NO. 12400
 1000 N. W. 10TH AVENUE, SUITE 100
 MIAMI, FL 33136
 PHONE: (305) 575-1100
 FAX: (305) 575-1101



osceola
 county
 elementary
 school "N"

for the
 school district of
 osceola county, florida
 809 hill back boulevard
 kissimmee, florida 34744

drawn: JV
 checked: JD 2/1/08
 date: 02/01/08
 comm. no.: 4755-01

SITE DIMENSION PLAN

C006