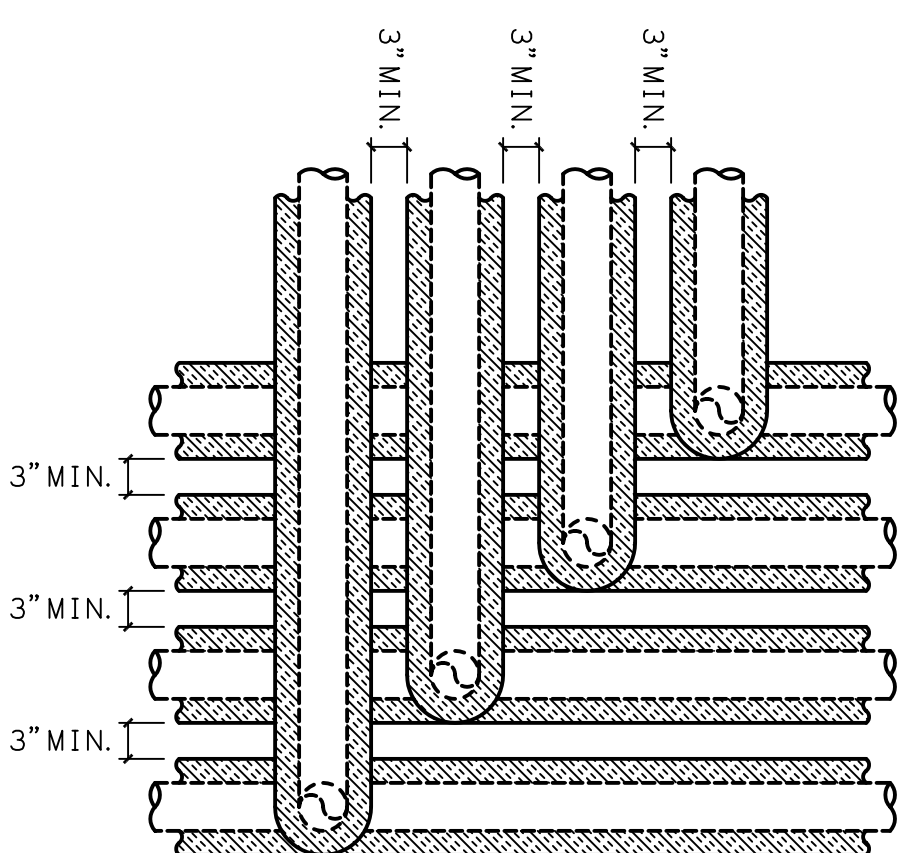


NOTES:  
1. COORDINATE PIPE ROUTING WITH STRUCTURAL FOOTERS.

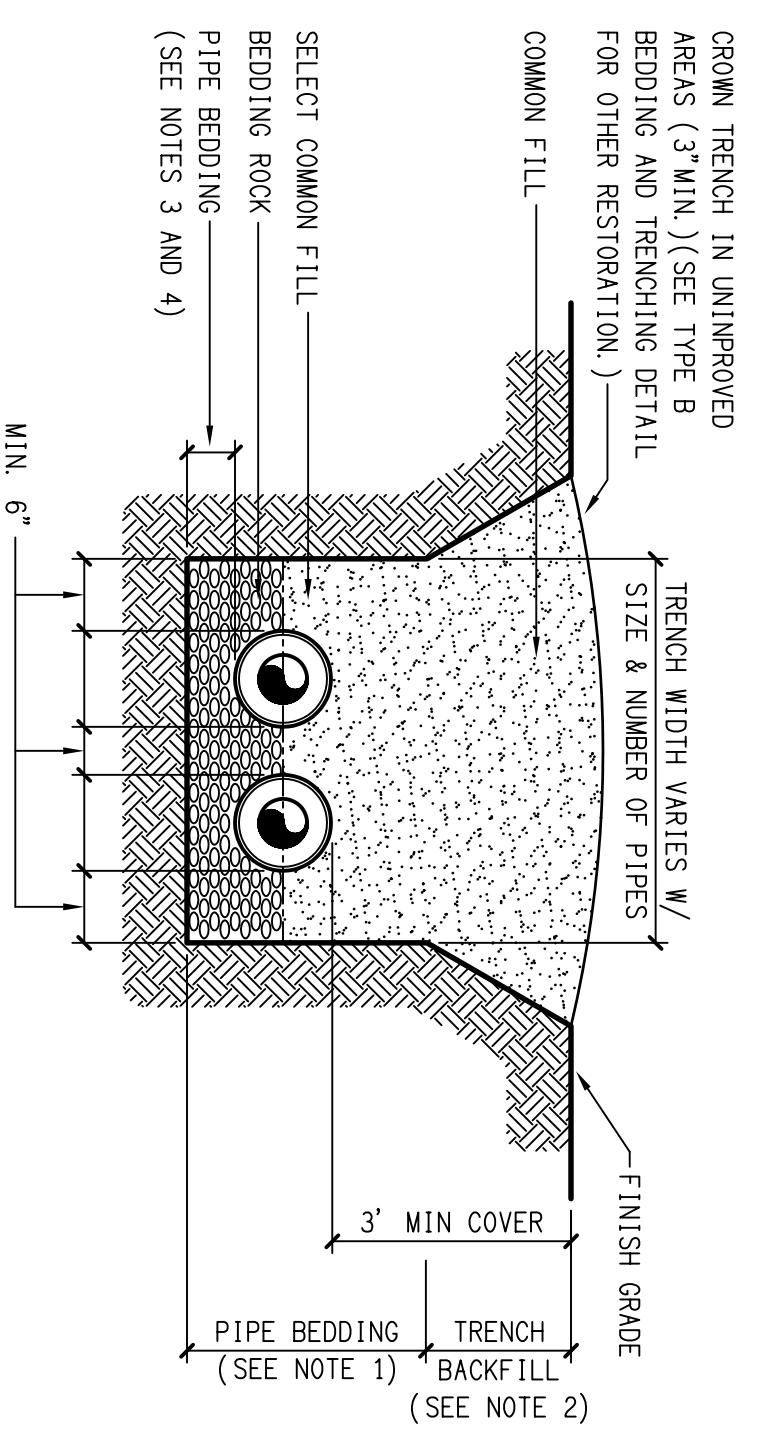
**1** PIPE PENETRATION DETAIL

SCALE: NOT TO SCALE



**3** UNDERGROUND BRANCH PIPING DETAIL

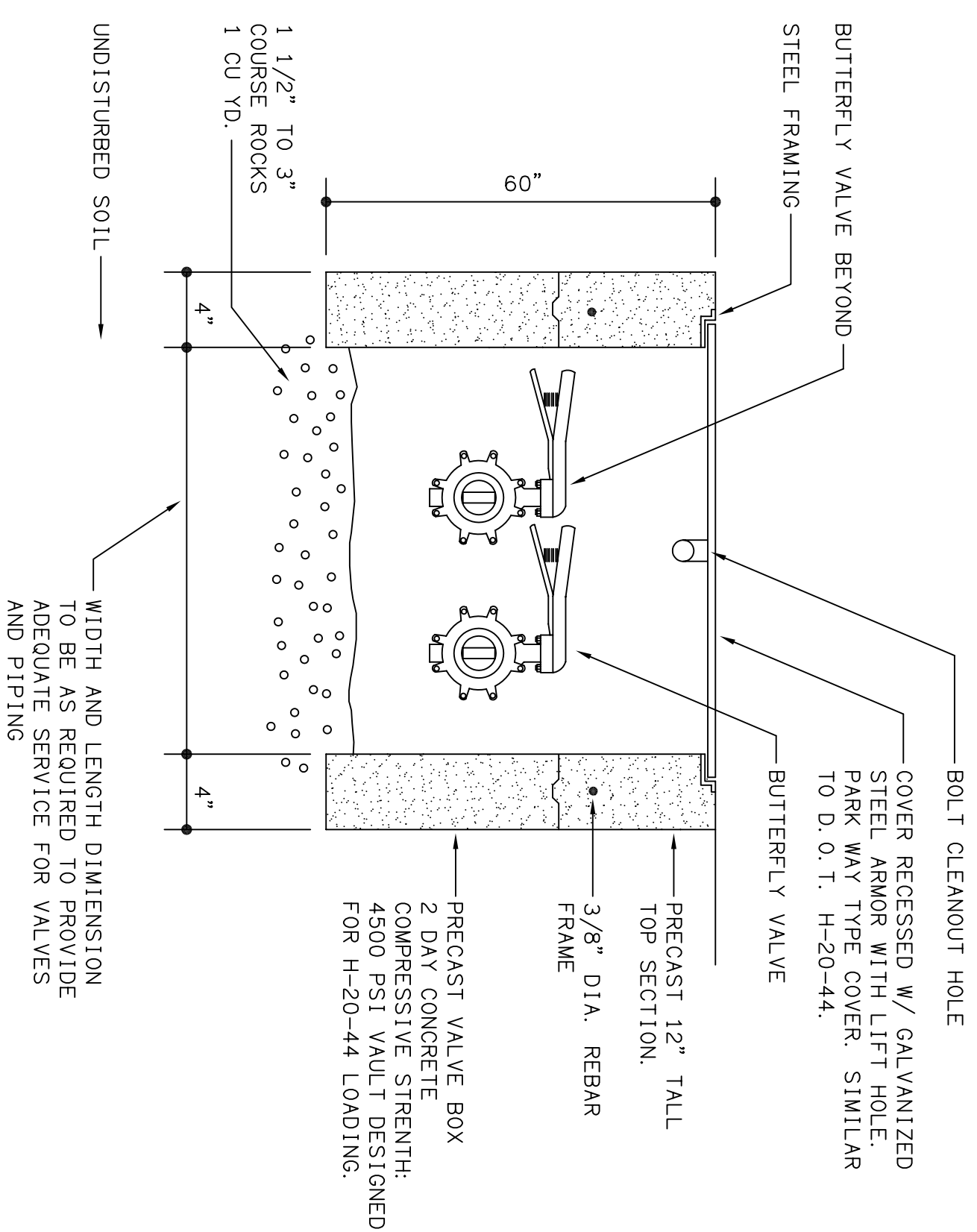
SCALE: NOT TO SCALE



NOTES:  
1. PIPE BEDDING: SELECT COMMON FILL COMPACTED TO 95% OF THE MAXIMUM DENSITY AS PER ASTM D 1585.  
2. TRENCH BACKFILL: COMMON FILL COMPACTED TO 95% OF THE MAXIMUM DENSITY AS PER ASTM D 1585.  
3. USE OF TYPE A BEDDING TO BE DETERMINED IN THE FIELD TO PROVIDE FOUNDATION FOR PIPE IN AREAS WITH A HIGH WATER TABLE TO AVOID SETTLING.  
4. DEPTH FOR REMOVAL OF UNSUITABLE MATERIAL SHALL GOVERN DEPTH OF BEDDING ROCK BELOW THE PIPE. A/E SHALL DETERMINE IN THE FIELD REQUIRED REMOVAL OF UNSUITABLE MATERIAL TO REACH SUITABLE FOUNDATION.  
5. CONFORM TO OSHA SAFETY STANDARDS.  
6. DEWATER AS REQUIRED DURING CONSTRUCTION.

**2** PIPE TRENCH DETAIL

SCALE: NOT TO SCALE



**4** CONCRETE VALVE VAULT DETAIL

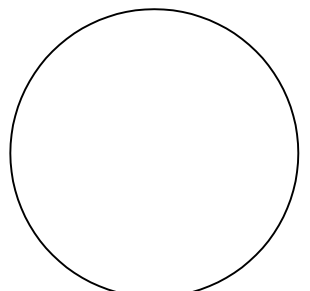
SCALE: NOT TO SCALE

Revisions

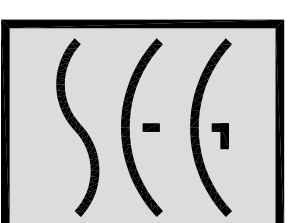
Discovery Middle School  
Chilled Water Piping Replacement

School District of Osceola County Florida

Engineer of Record  
Donald J. Sabiston, P.E., State of Florida No. 54889



SABISTON ENGINEERING GROUP, INC.  
8212 EARLWOOD AVE. · MT DORA, FL 32757  
P: 352.383.5525 · F: 352.383.5572  
WWW.SABISTONENGINEERING.COM  
STATE OF FLORIDA CERTIFICATE NO. 9811  
SEG PROJECT NO. 09001



Sheet Title  
Mechanical  
Details

Number

M5.01