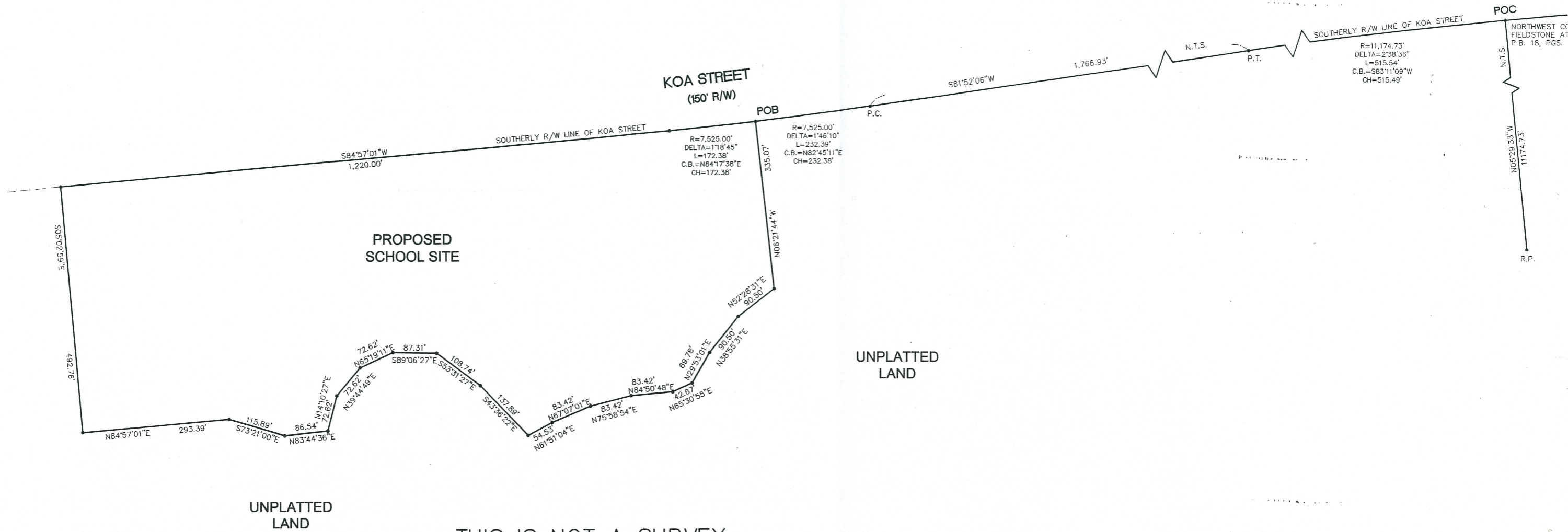


# SKETCH OF LEGAL DESCRIPTION

## LEGAL DESCRIPTION:

COMMENCE AT THE NORTHWEST CORNER OF FIELDSTONE AT CYPRESS WOODS WEST, AS RECORDED IN PLAT BOOK 18, PAGES 18 AND 19 OF THE PUBLIC RECORDS OF OSCEOLA COUNTY, FLORIDA; SAID POINT BEING A POINT ON THE SOUTH RIGHT OF WAY LINE OF KOA STREET AND A POINT ON A CURVE, CONCAVE SOUTHERLY, OF WHICH THE RADIUS POINT LIES SOUTH 05°29'33" EAST A RADIAL DISTANCE OF 11,174.73 FEET (CHORD BEARING SOUTH 83°11'09" WEST AND CHORD DISTANCE OF 515.49 FEET); THENCE RUN ALONG THE ARC OF SAID CURVE AND SAID SOUTH RIGHT OF WAY LINE THROUGH A CENTRAL ANGLE OF 02°38'36", A DISTANCE OF 515.54 FEET TO THE POINT OF TANGENT; THENCE RUN SOUTH 81°52'06" WEST, A DISTANCE OF 1,766.93 FEET TO A POINT OF CURVE TO THE RIGHT, HAVING A RADIUS OF 7,525.00 FEET (CHORD BEARING SOUTH 82°45'11" WEST AND CHORD DISTANCE OF 232.38 FEET); THENCE RUN ALONG THE ARC OF SAID CURVE THROUGH A CENTRAL ANGLE OF 01°46'10", A DISTANCE OF 232.39 FEET TO THE POINT OF BEGINNING, THENCE CONTINUE WESTERLY ALONG THE ARC OF SAID CURVE AND SAID SOUTH RIGHT OF WAY LINE, THROUGH A CENTRAL ANGLE OF 01°18'45", A DISTANCE OF 172.38 FEET; THENCE RUN SOUTH 84°57'01" WEST, A DISTANCE OF 1,220.00 FEET; THENCE RUN SOUTH 05°02'59" EAST, A DISTANCE OF 492.76 FEET; THENCE RUN NORTH 84°57'01" EAST, A DISTANCE OF 293.39 FEET; THENCE RUN SOUTH 73°21'00" EAST, A DISTANCE OF 115.89 FEET; THENCE RUN NORTH 83°44'36" EAST, A DISTANCE OF 86.54 FEET; THENCE RUN NORTH 14°10'27" EAST, A DISTANCE OF 72.62 FEET; THENCE RUN NORTH 39°44'49" EAST, A DISTANCE OF 72.62 FEET; THENCE RUN NORTH 65°19'11" EAST, A DISTANCE OF 72.62 FEET; THENCE RUN SOUTH 89°06'27" EAST, A DISTANCE OF 87.31 FEET; THENCE RUN SOUTH 53°31'27" EAST, A DISTANCE OF 108.74 FEET; THENCE RUN SOUTH 43°36'22" EAST, A DISTANCE OF 137.89 FEET; THENCE RUN NORTH 61°51'04" EAST, A DISTANCE OF 54.53 FEET; THENCE RUN NORTH 67°07'01" EAST, A DISTANCE OF 83.42 FEET; THENCE RUN NORTH 75°58'54" EAST, A DISTANCE OF 83.42 FEET; THENCE RUN NORTH 84°50'48" EAST, A DISTANCE OF 83.42 FEET; THENCE RUN NORTH 65°30'55" EAST, A DISTANCE OF 42.67 FEET; THENCE RUN NORTH 29°53'01" EAST, A DISTANCE OF 69.78 FEET; THENCE RUN NORTH 38°55'31" EAST, A DISTANCE OF 90.50 FEET; THENCE RUN NORTH 52°28'31" EAST, A DISTANCE OF 90.50 FEET; THENCE RUN NORTH 06°21'44" WEST, A DISTANCE OF 335.07 FEET TO THE POINT OF BEGINNING.

CONTAINING 15.44 ACRES, MORE OR LESS.



THIS DOCUMENT AND THE CONTENTS HEREIN ARE THE PROPERTY OF HANSON, WALTER & ASSOCIATES, INC. AND ARE LOANED ONLY FOR THE SPECIFIC PROJECT NOTED ON THESE DRAWINGS. ANY REPRODUCTION, WITHOUT THE EXPRESS WRITTEN CONSENT OF HANSON, WALTER & ASSOCIATES, INC. IS PROHIBITED BY LAW.

B.O.C. = BACK OF CURB	I.D. = IDENTIFICATION	PRC = POINT OF REVERSE CURVE	TWP. = TOWNSHIP	..... = BUILDING SETBACK LINE
BLDG. = BUILDING	I.P. = IRON PIPE	PP = POWER POLE	U = UTILITY	— OHP — OVERHEAD ELECTRIC LINES
C.B.S. = CONCRETE BLOCK STRUCTURE	I.R. = 5/8" IRON ROD	PRM = PERMANENT REFERENCE MONUMENT	⊕ = CENTERLINE	⊕ WOOD UTILITY POLE
CH = CHORD	L = LENGTH OF CURVE	PT = POINT OF TANGENCY	Δ = DELTA (CENTRAL ANGLE)	⊕ GUY WIRE
C.M. = CONCRETE MONUMENT	L.B. = LICENSED SURVEYING BUSINESS	PG. = PAGE	(C) = CALCULATED DATA	
C.P. = CONCRETE PIPE	N.T.S. = NOT TO SCALE	R = RADIUS	(D) = DEED DATA	
CONC. = CONCRETE	N.R. = NON-RADIAL	RES. = RESIDENCE	(L) = LEGAL DESCRIPTION DATA	
C.B. = CHORD BEARING	O/S = OFFSET	RGE = RANGE	(M) = MEASURED DATA	
D = DRAINAGE	O.R. = OFFICIAL RECORD	RLS = REGISTERED LAND SURVEYOR	(P) = PLAT DATA	
E.O.P. = EDGE OF PAVEMENT	P.B. = PLAT BOOK	RO = ROOF OVERHANG	• = PK NAIL	
EL = ELEVATION	P.C. = POINT OF CURVATURE	R/W = RIGHT OF WAY	⊙ = 5/8" IRON ROD	
ESM'T = EASEMENT	P.I. = POINT OF INTERSECTION	SW = SIDEWALK	⊙ = CONCRETE MONUMENT	
F.F. = FINISH FLOOR	P.L.S. = PROFESSIONAL LAND SURVEYOR	SEC = SECTION	⊙ = NAIL & DISC	
FND. = FOUND	P.O.B. = POINT OF BEGINNING	T = TANGENT LENGTH OF CURVE	⊙ = IRON PIPE	
HWA = HANSON, WALTER & ASSOCIATES	P.O.C. = POINT OF COMMENCEMENT	TOB = TOP OF BANK	PCC = POINT OF COMPOUND CURVE	

THIS IS NOT A SURVEY

DESIGN	N/A	F.B. NO.	N/A
DRAWN	RC	PAGE	N/A
CHECKED	RH	SCALE	1"=100'
CAD #	9179-10	DATE	09-20-06

SEC.	11
TWP.	27 S.
RANGE	28 E.

400 WEST EMMETT STREET KISSIMMEE, FLORIDA 34741  
 PHONE: (407) 847-9433 FAX: (407) 847-2499  
**HWA**  
 HANSON, WALTER & ASSOCIATES, INC.  
 ENGINEERING, SURVEYING AND PLANNING  
 LICENSED BUSINESS # 3270

PREPARED FOR:  
 OSCEOLA COUNTY  
 SCHOOL DISTRICT

FIELDSTONE SCHOOL SITE

*[Signature]*  
 Registered Professional Engineer  
 State of Florida, License # 12345  
 Date: 09/20/06