

# SCHOOL DISTRICT OF OSCEOLA COUNTY

## ORGANIZATIONAL CHARTS

### Office of the Superintendent

#### Legal Services

#### Chief of Staff & Strategy

Student Services

Human Resources

#### Community Relations

Oasis

#### Teaching, Learning, & Leading

Elementary Schools

Early Childhood Learning, Extended Learning, & 21<sup>st</sup> Century

Middle K8 Schools

High Schools

Educational Choices & Innovation

School Transformation

Curriculum & Instruction

Guidance Services

Career & Technical Education

Exceptional Student Education

Multicultural

Professional Learning



Revised 01.24.25

School District of Osceola County

Research, Evaluation, & Accountability

**Facilities**

Design & Construction

Planning Services

**Fiscal Services**

Budget

Finance

Grants Management

Risk & Benefits

Purchasing & Warehouse

**Information Technology Services**

Information Services

Media & Instructional Technology

Network & Information Security

**Safety, Security, & Emergency Management**

**School Operations**

Centralized Custodial & Ancillary Services

Maintenance

School Nutrition Services

Transportation

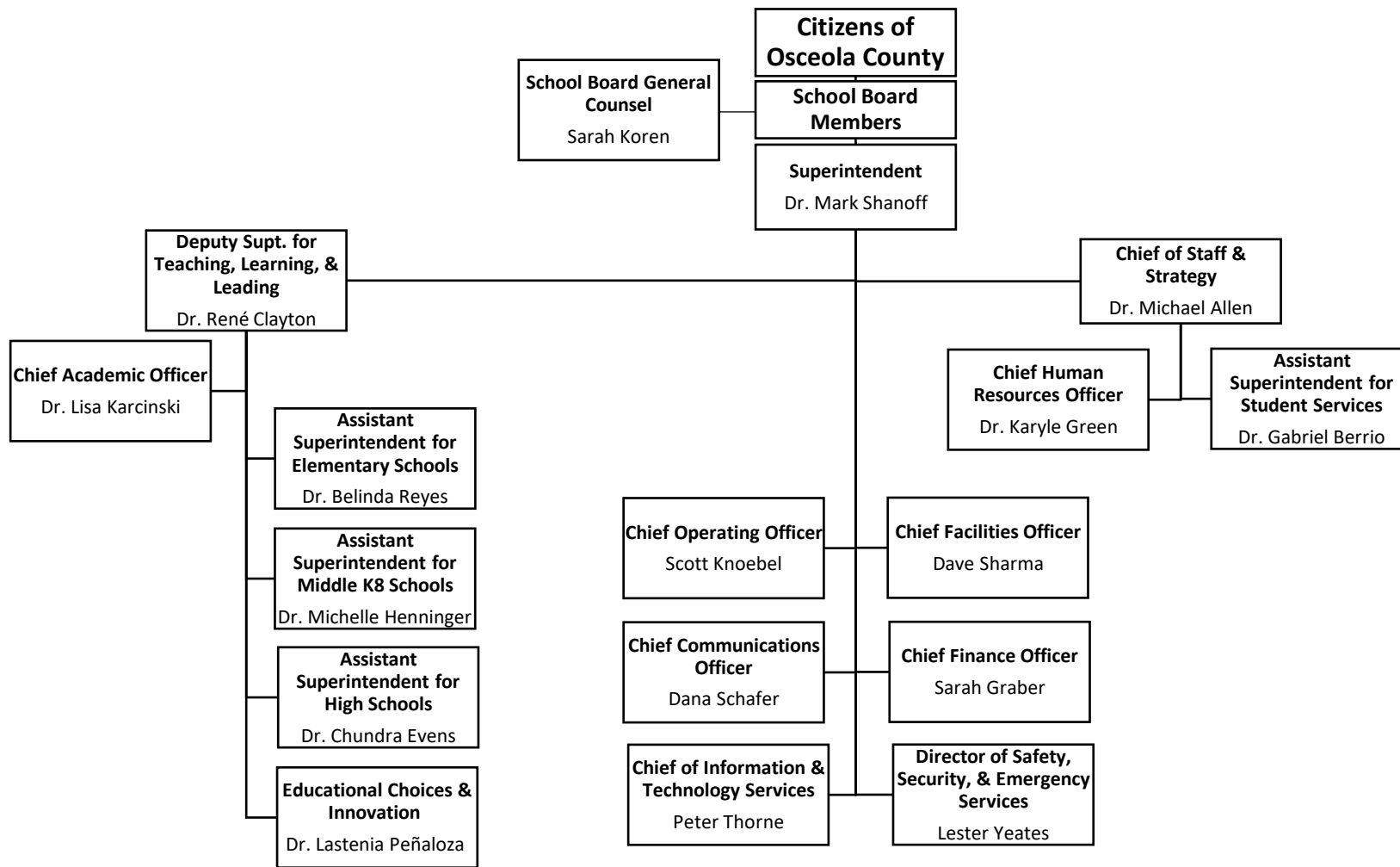


Revised 01.24.25

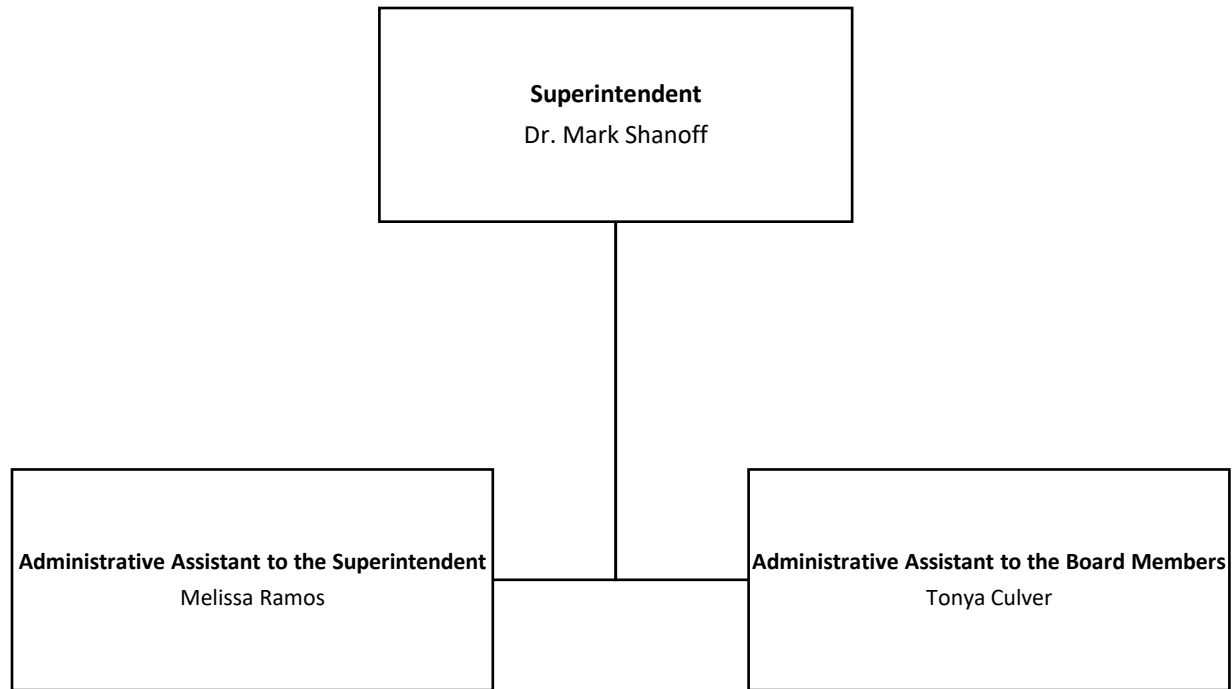
School District of Osceola County



Revised 01.24.25

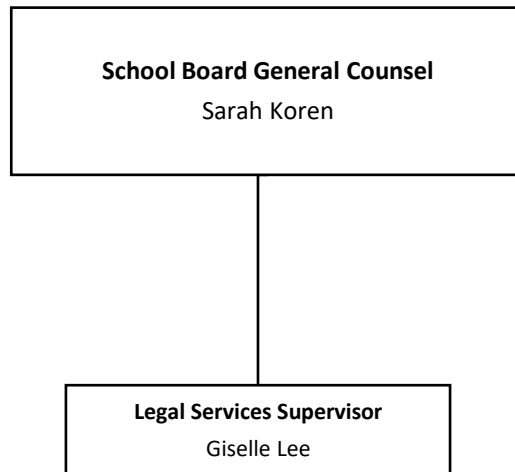


# SUPERINTENDENT

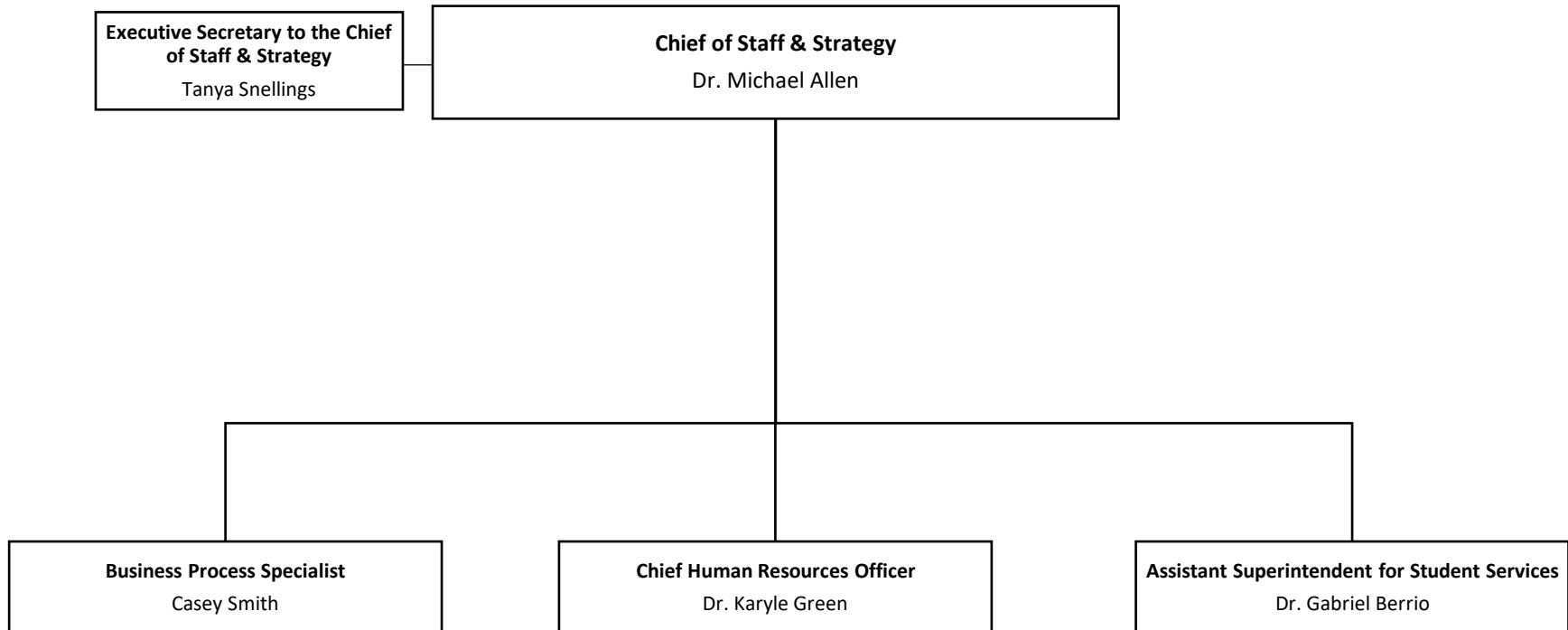


Revised 01.24.25

# LEGAL SERVICES

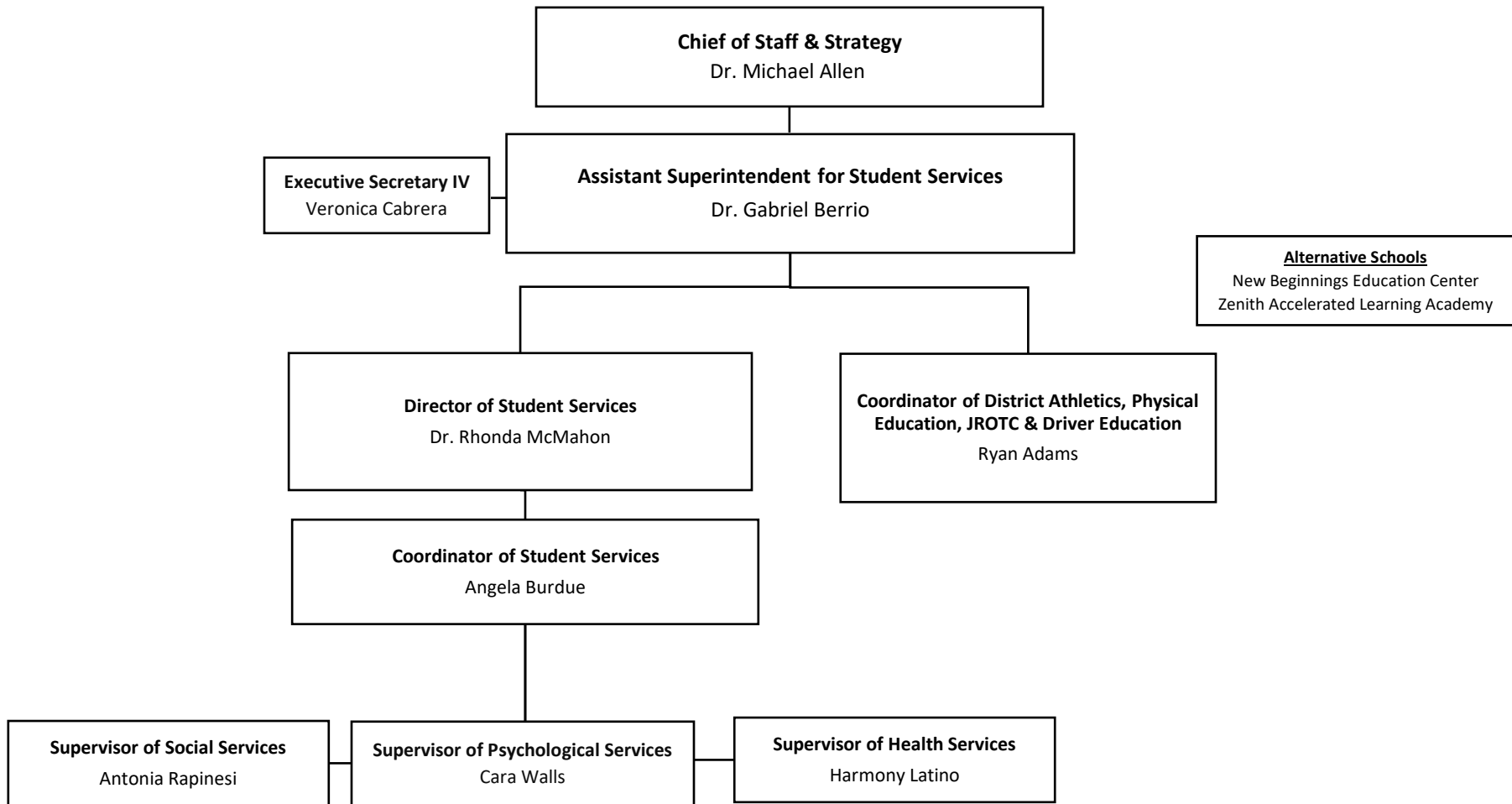


# CHIEF OF STAFF & STRATEGY

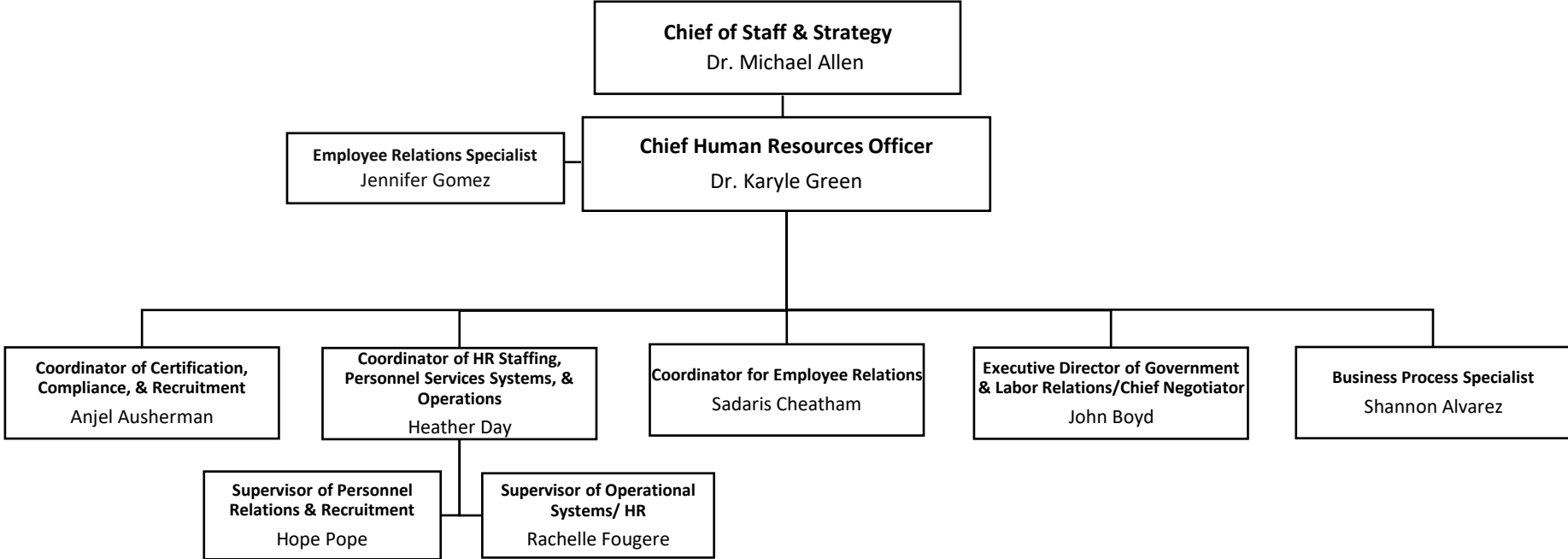


Revised 01.24.25

# STUDENT SERVICES

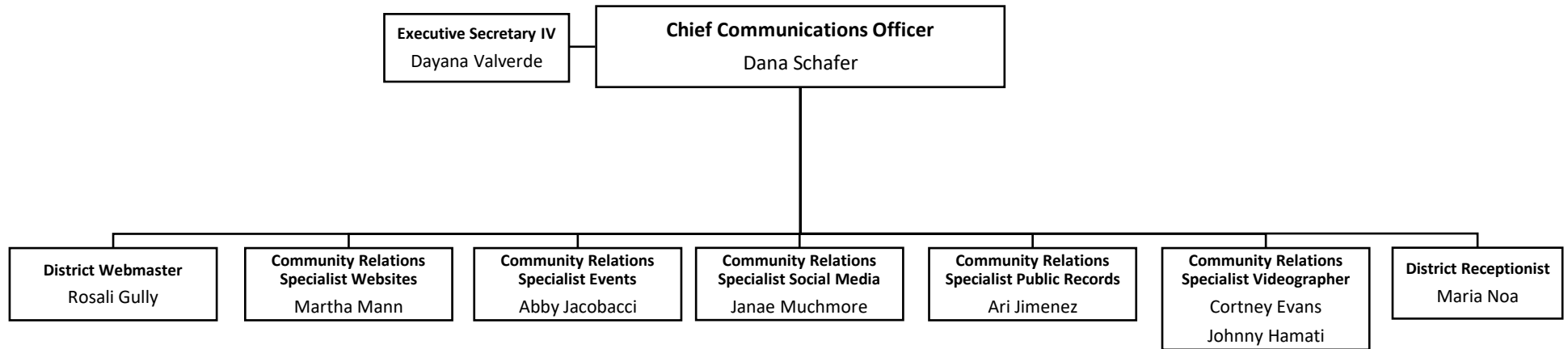


# HUMAN RESOURCES



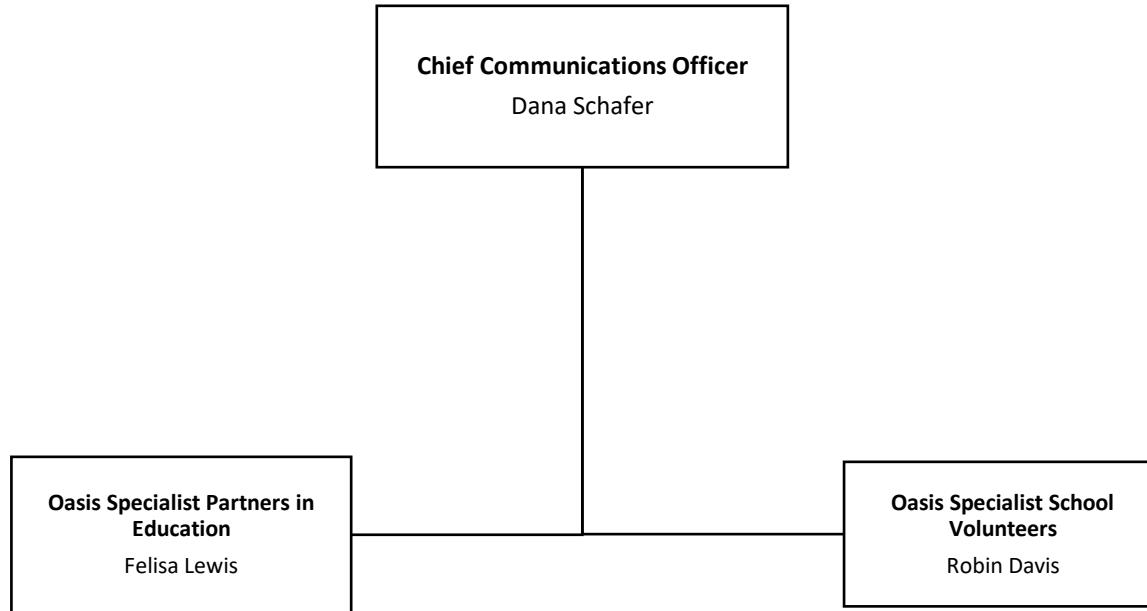


# COMMUNITY RELATIONS

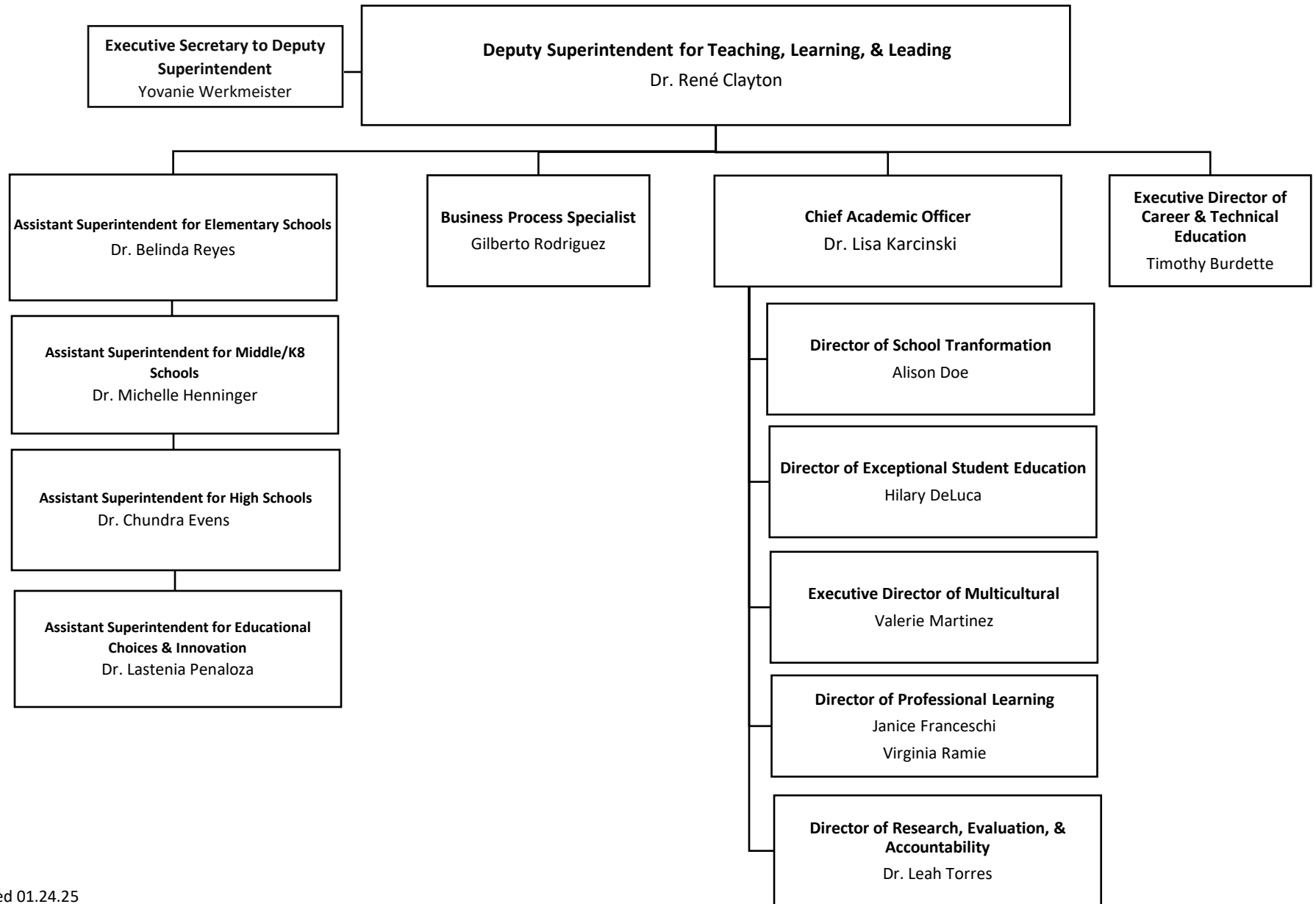


Revised 01.24.25

# OASIS

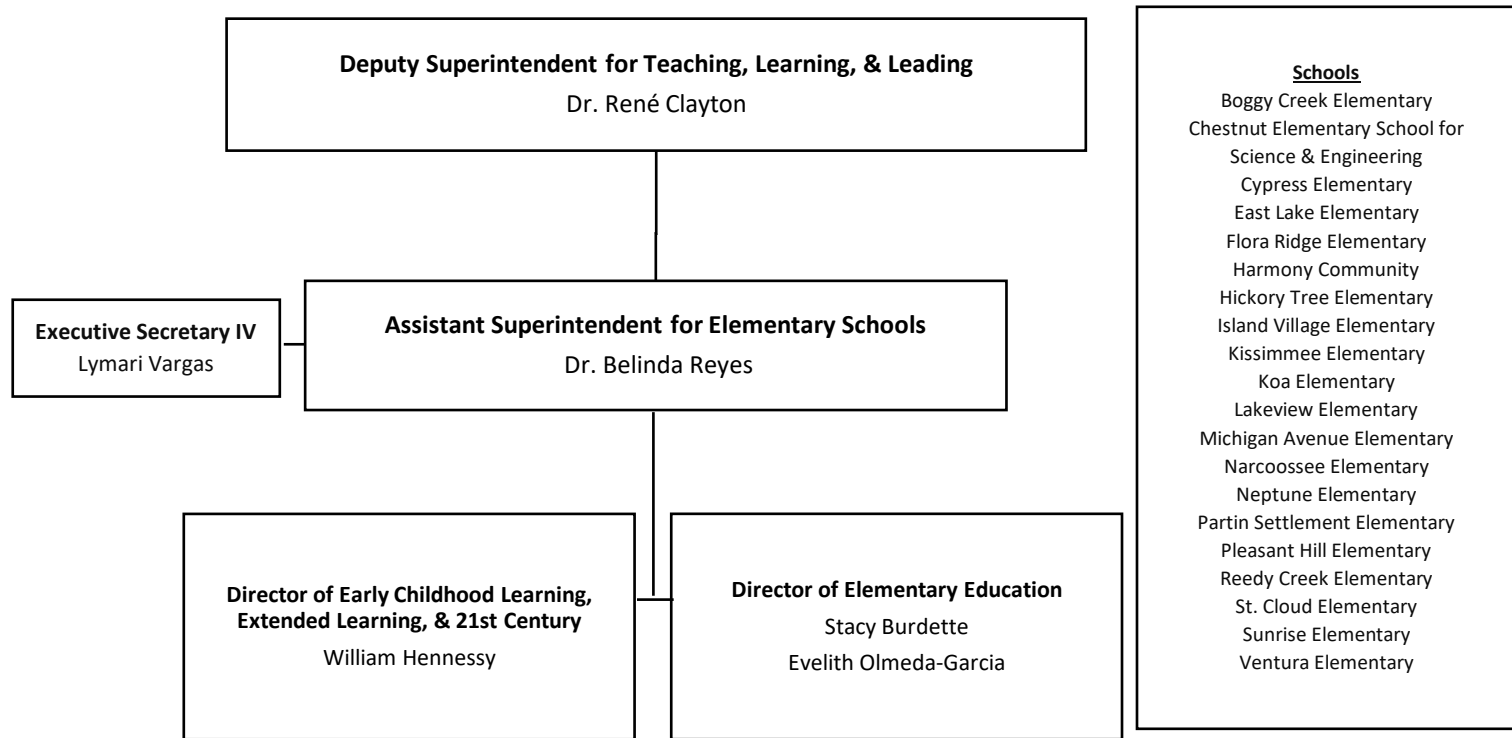


# TEACHING, LEARNING, & LEADING



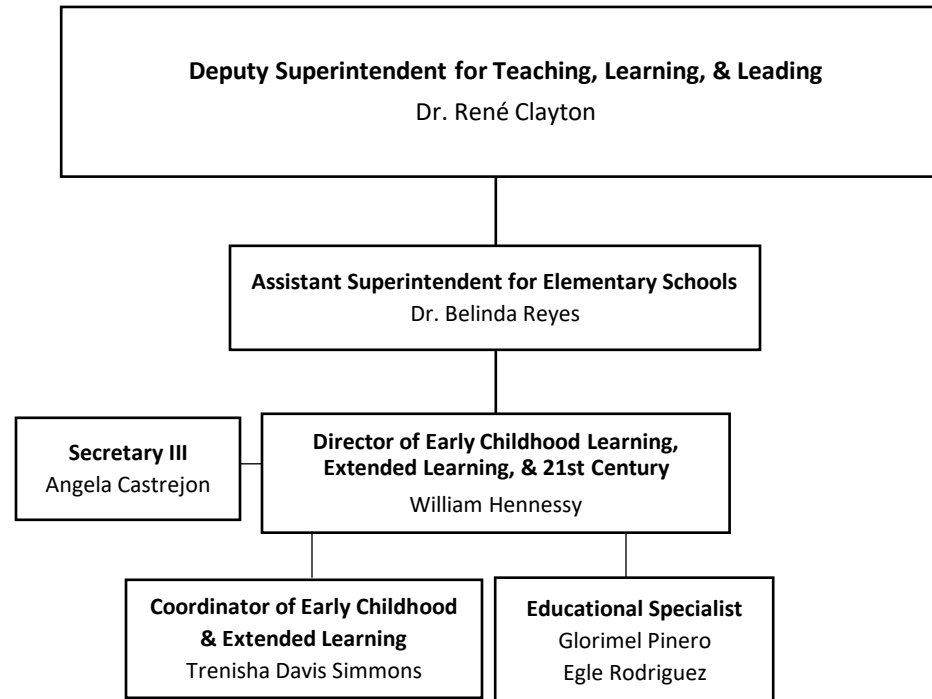
Revised 01.24.25

# ELEMENTARY SCHOOLS



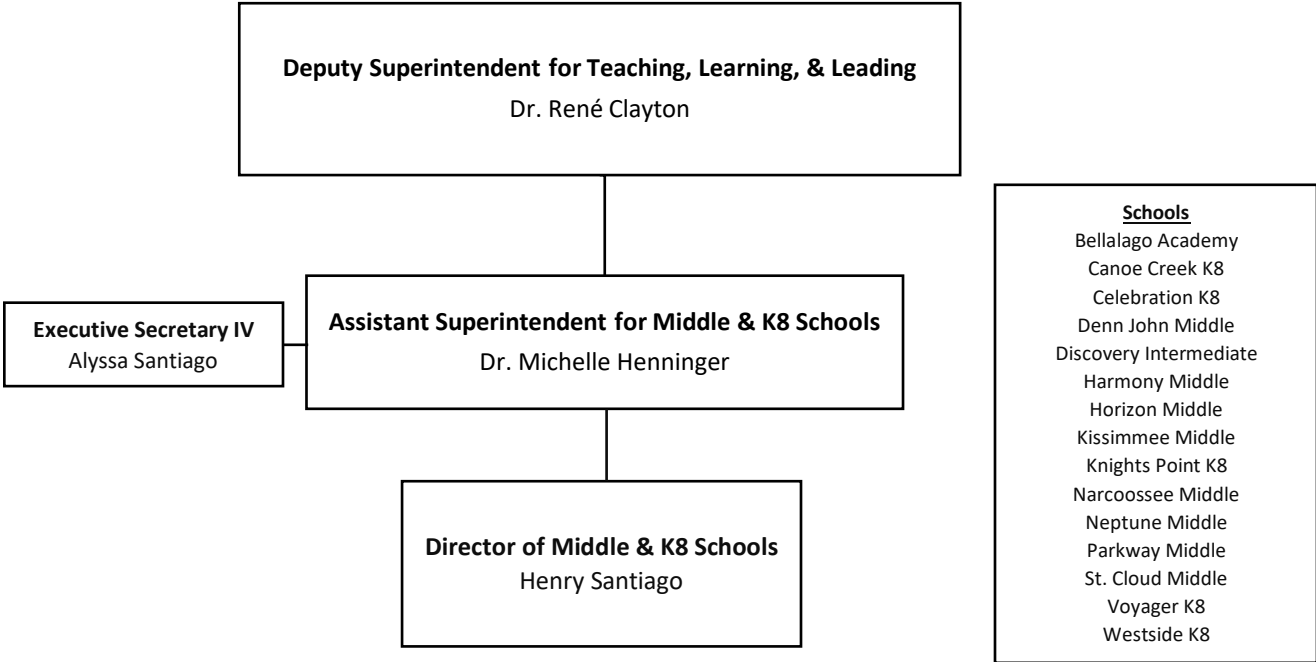
Revised 01.24.25

# EARLY CHILDHOOD LEARNING, EXTENDED LEARNING, & 21<sup>ST</sup> CENTURY

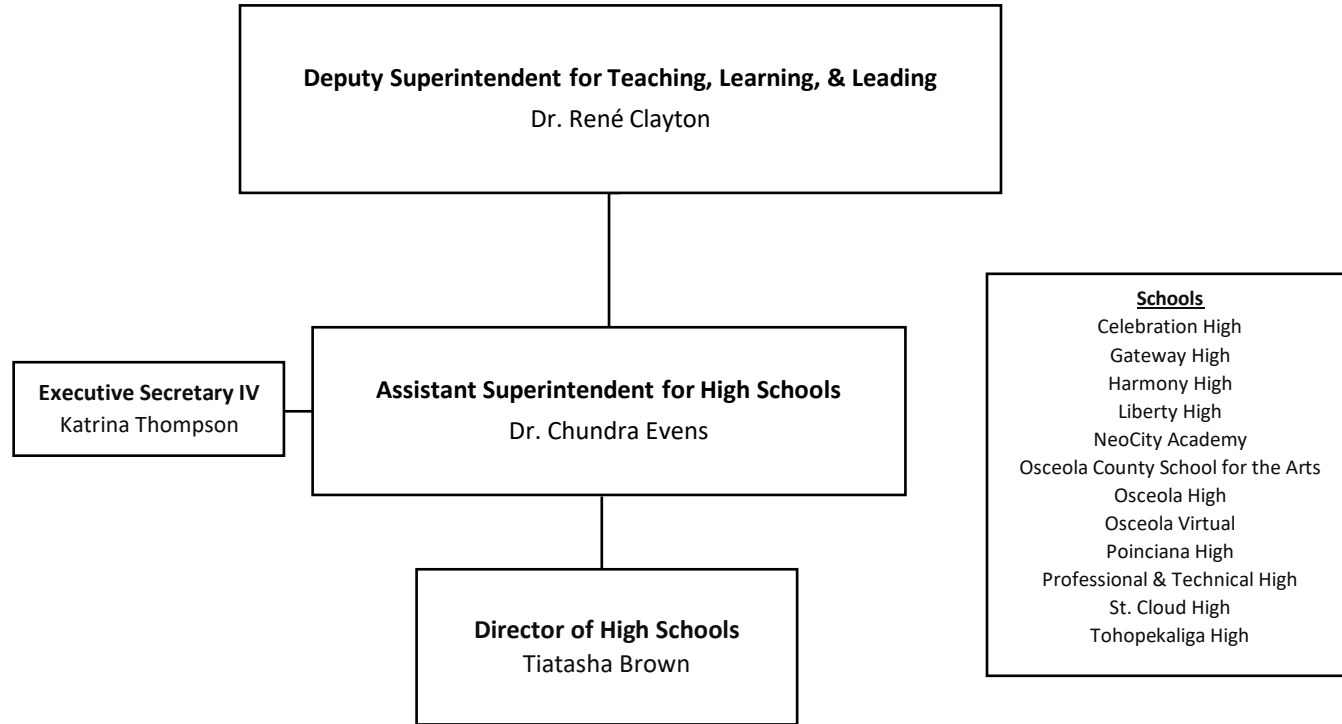


Revised 01.24.25

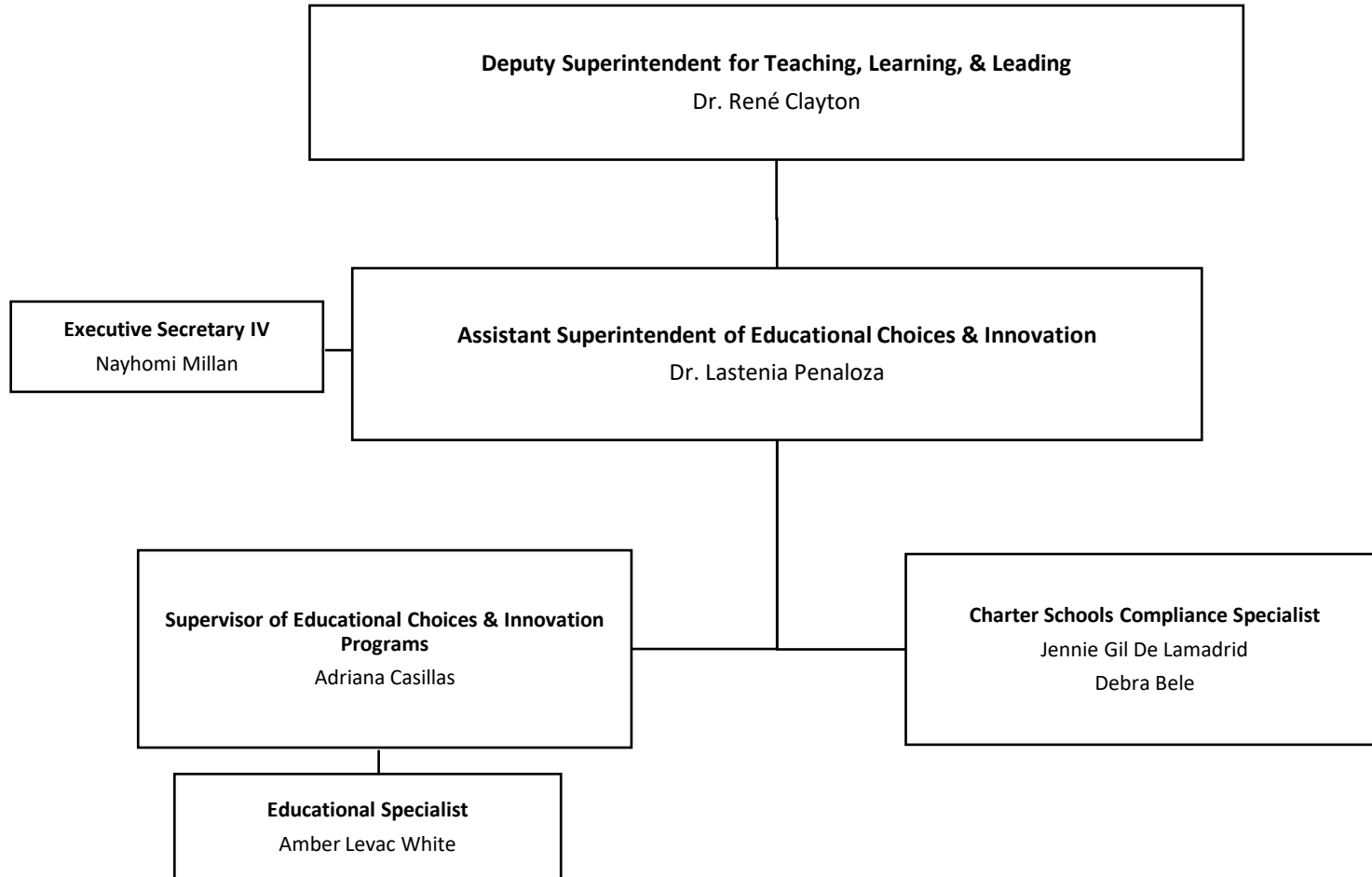
# MIDDLE & K8 SCHOOLS



# HIGH SCHOOLS

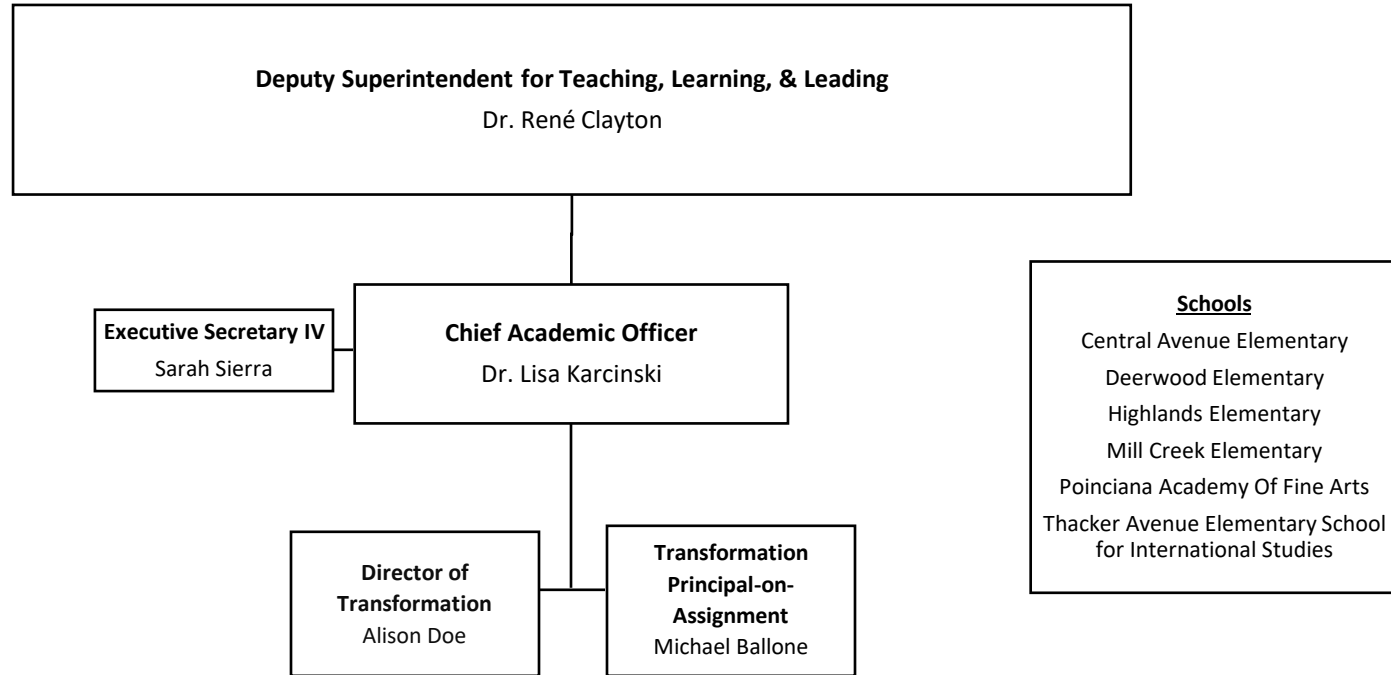


# EDUCATIONAL CHOICES & INNOVATION

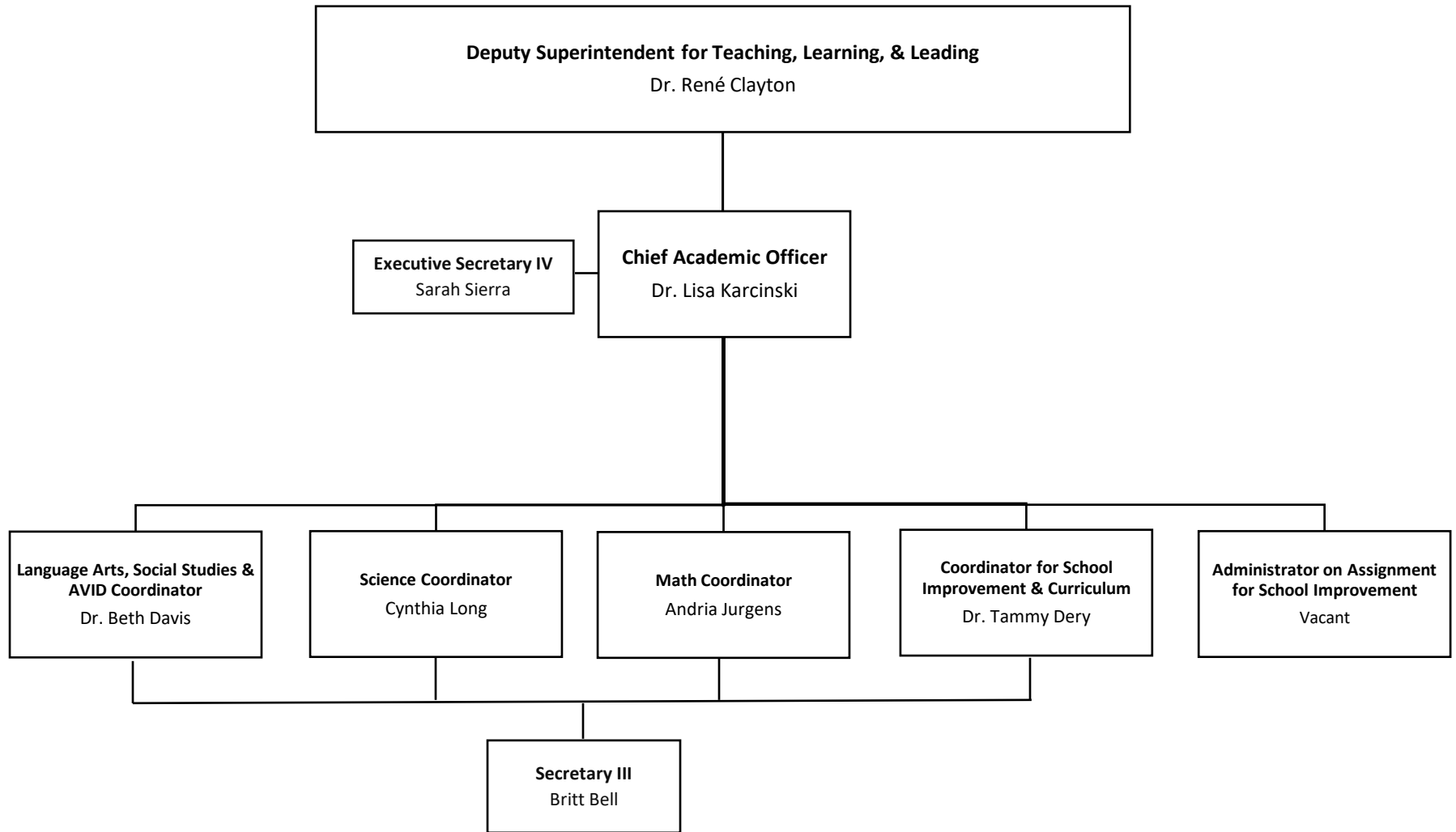




# SCHOOL TRANSFORMATION

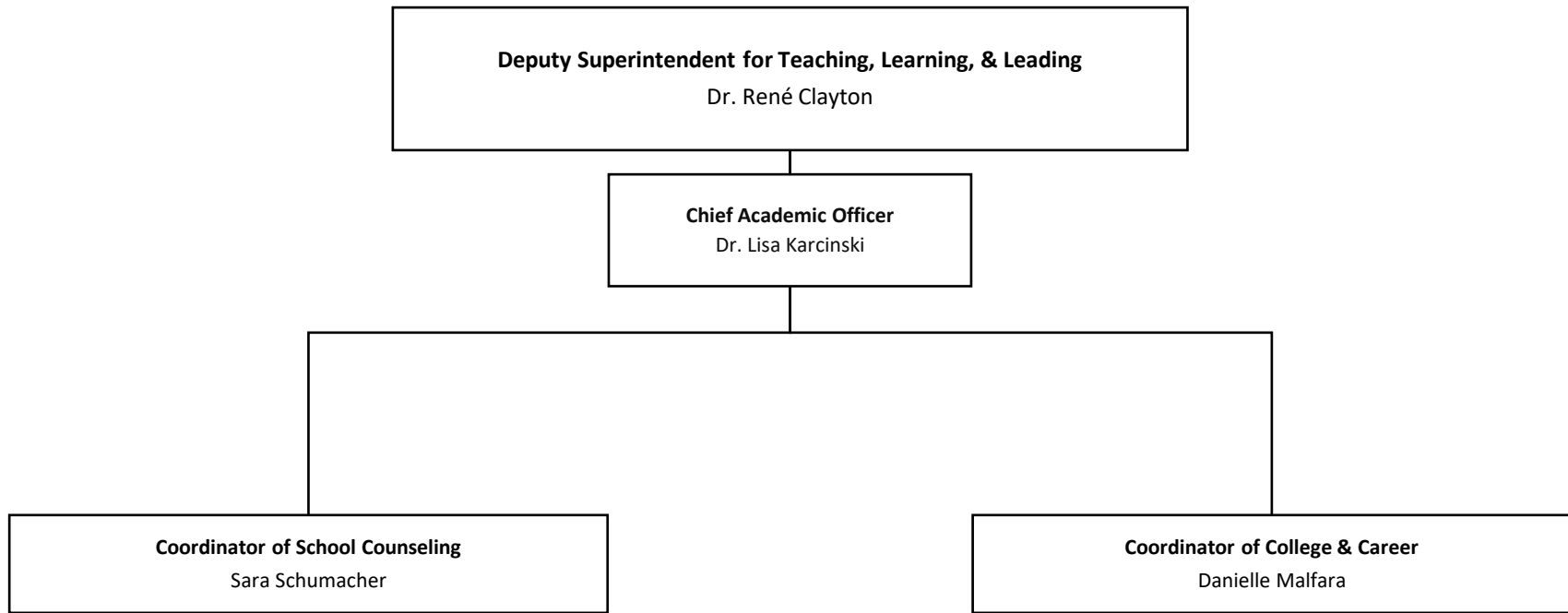


# CURRICULUM & INSTRUCTION



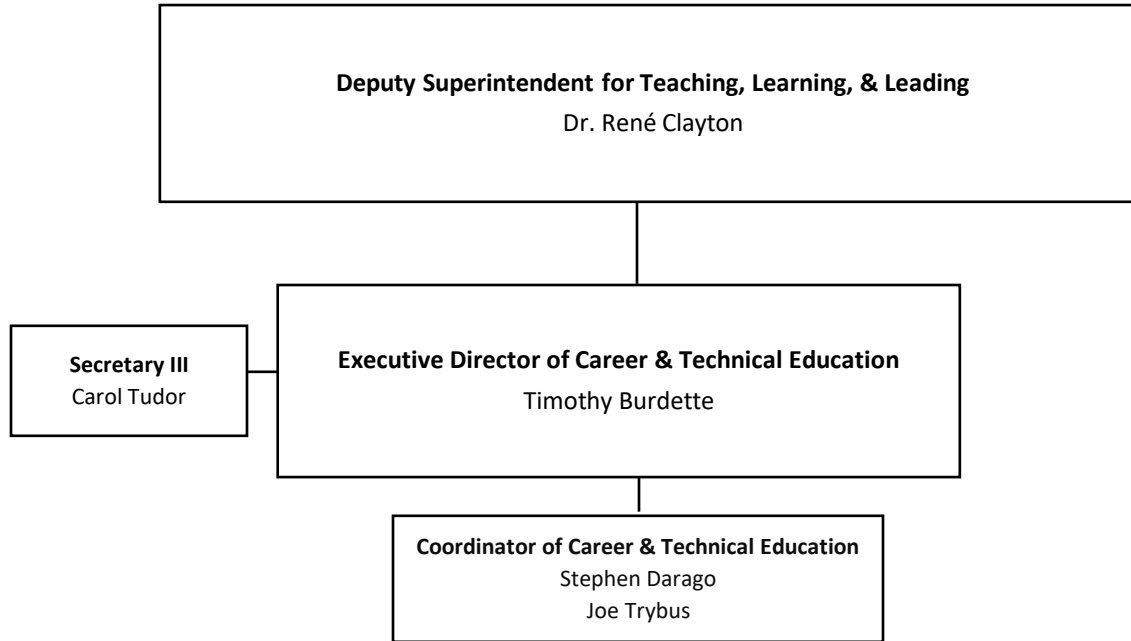
Revised 01.24.25

# GUIDANCE SERVICES

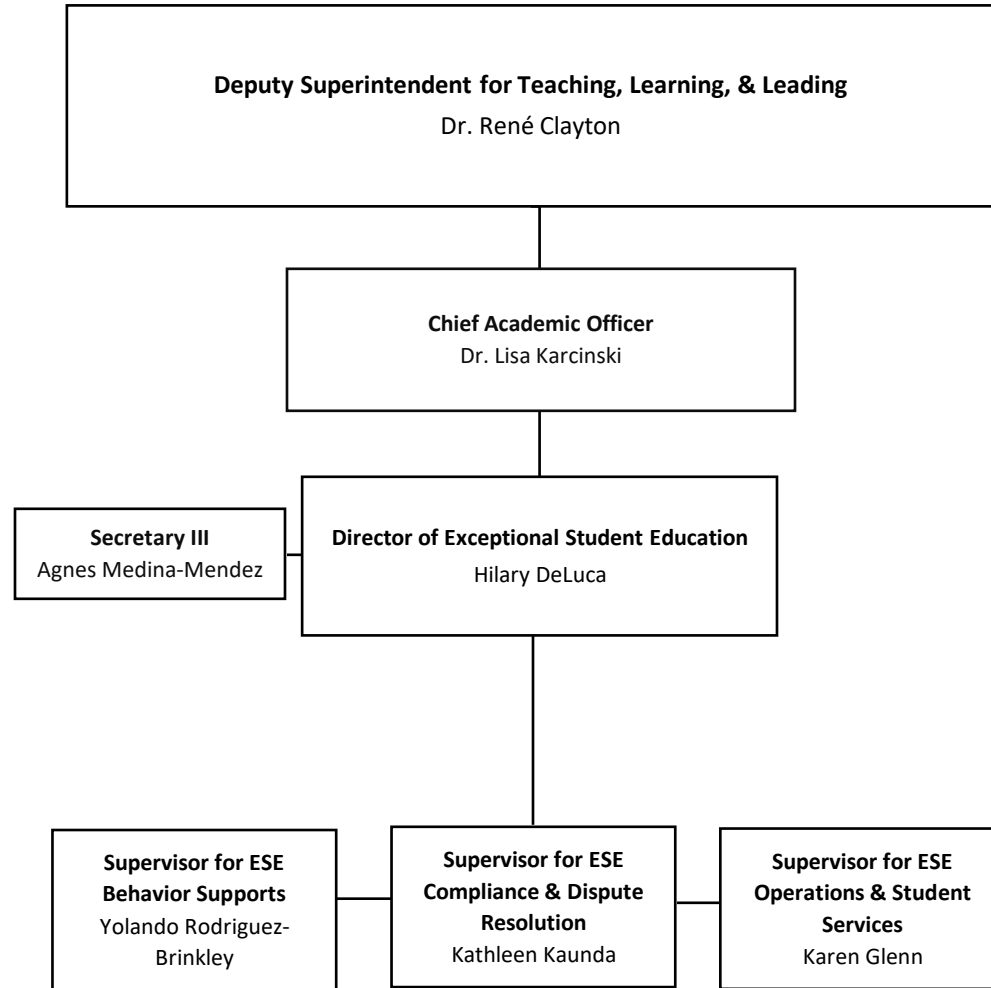


Revised 01.24.25

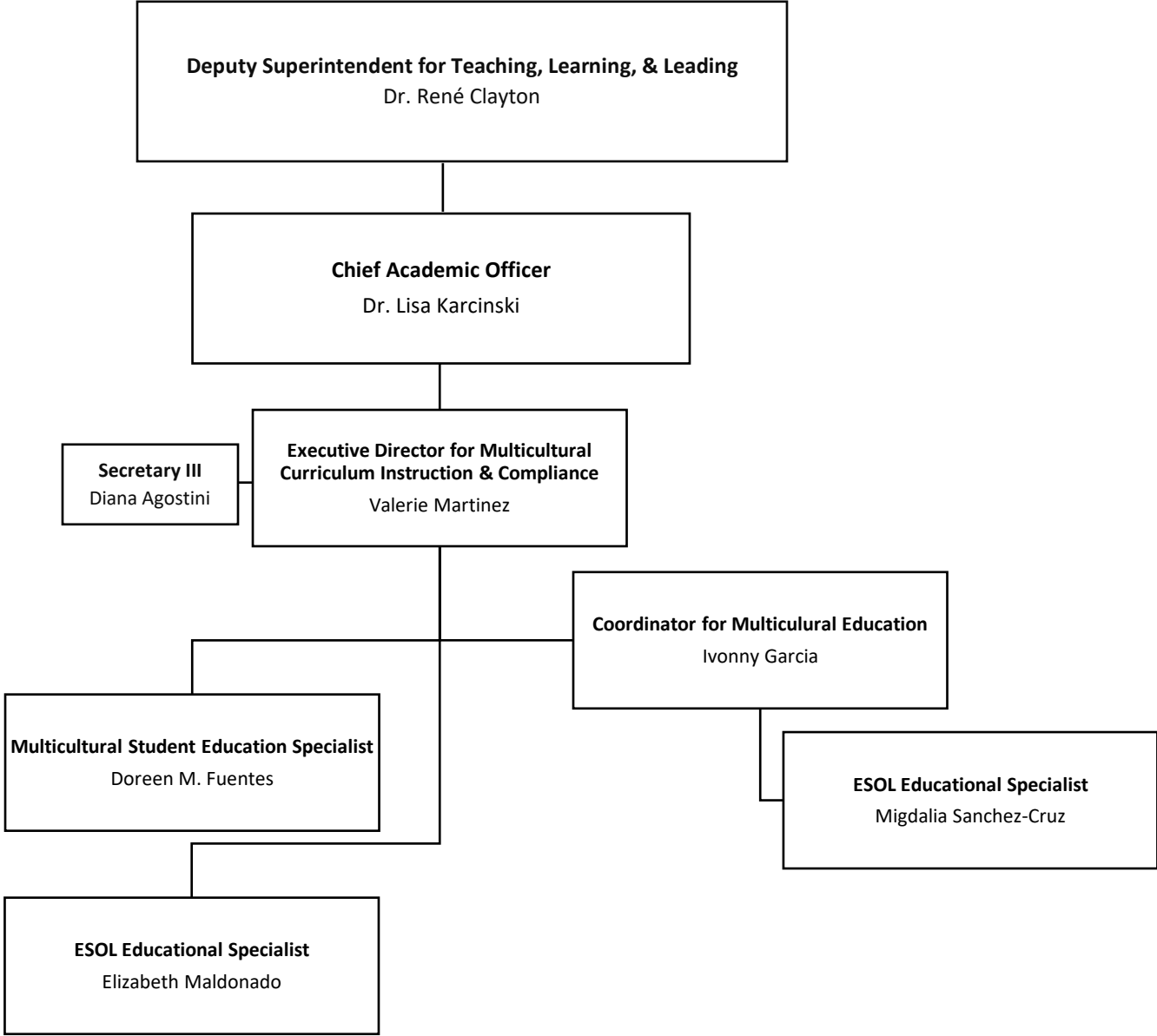
# CAREER & TECHNICAL EDUCATION



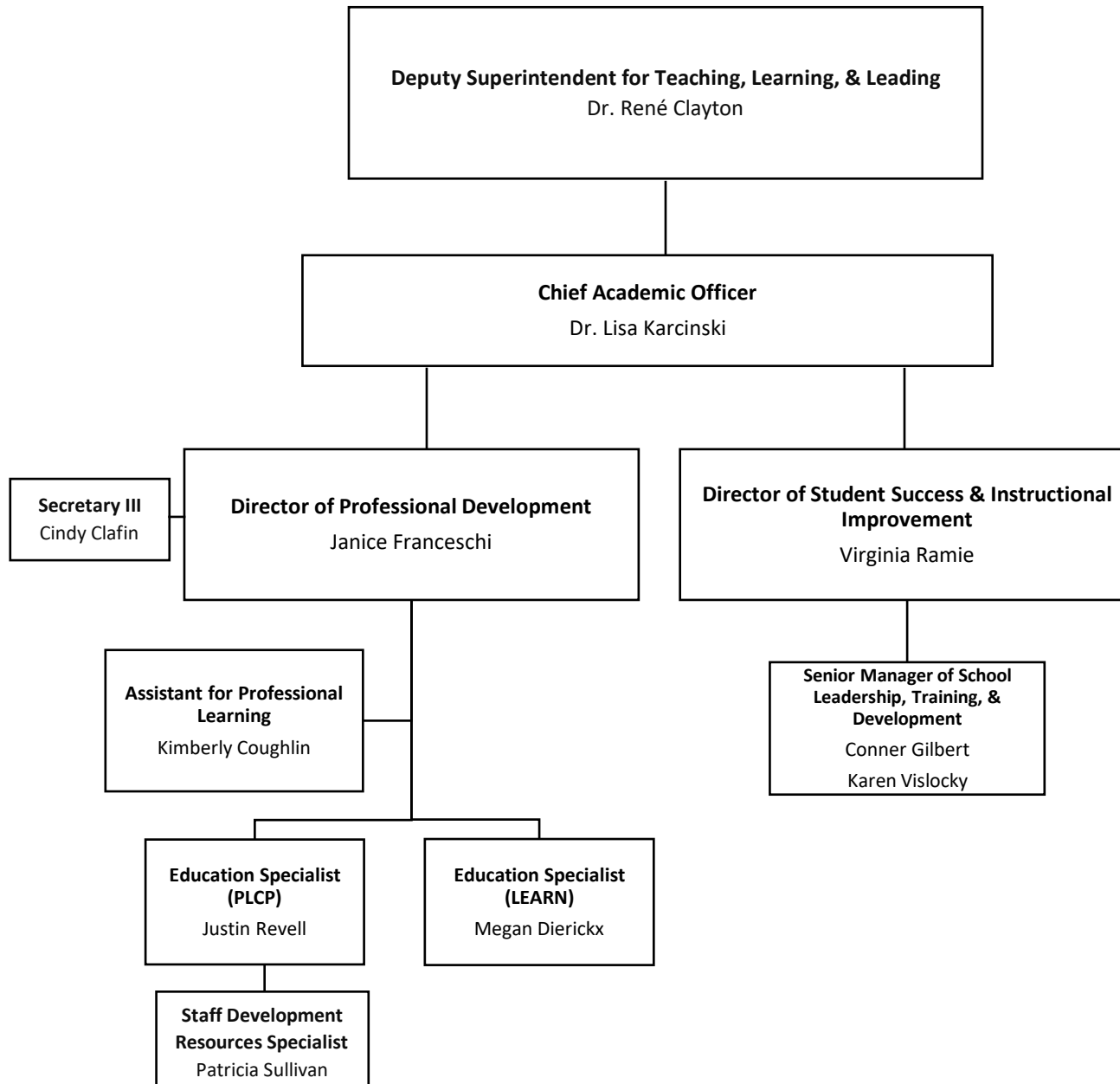
# EXCEPTIONAL STUDENT EDUCATION



# MULTICULTURAL EDUCATION

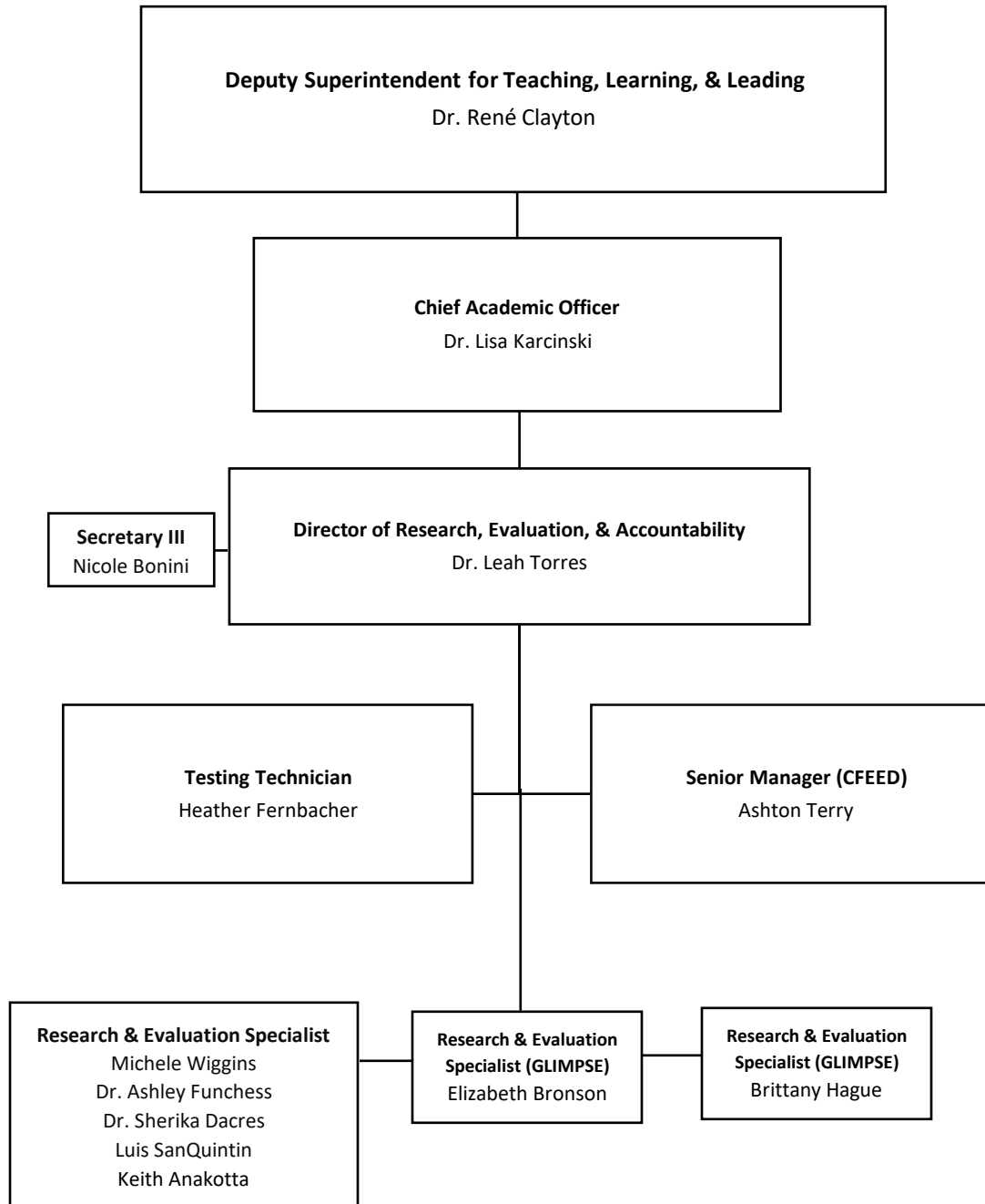


# PROFESSIONAL LEARNING



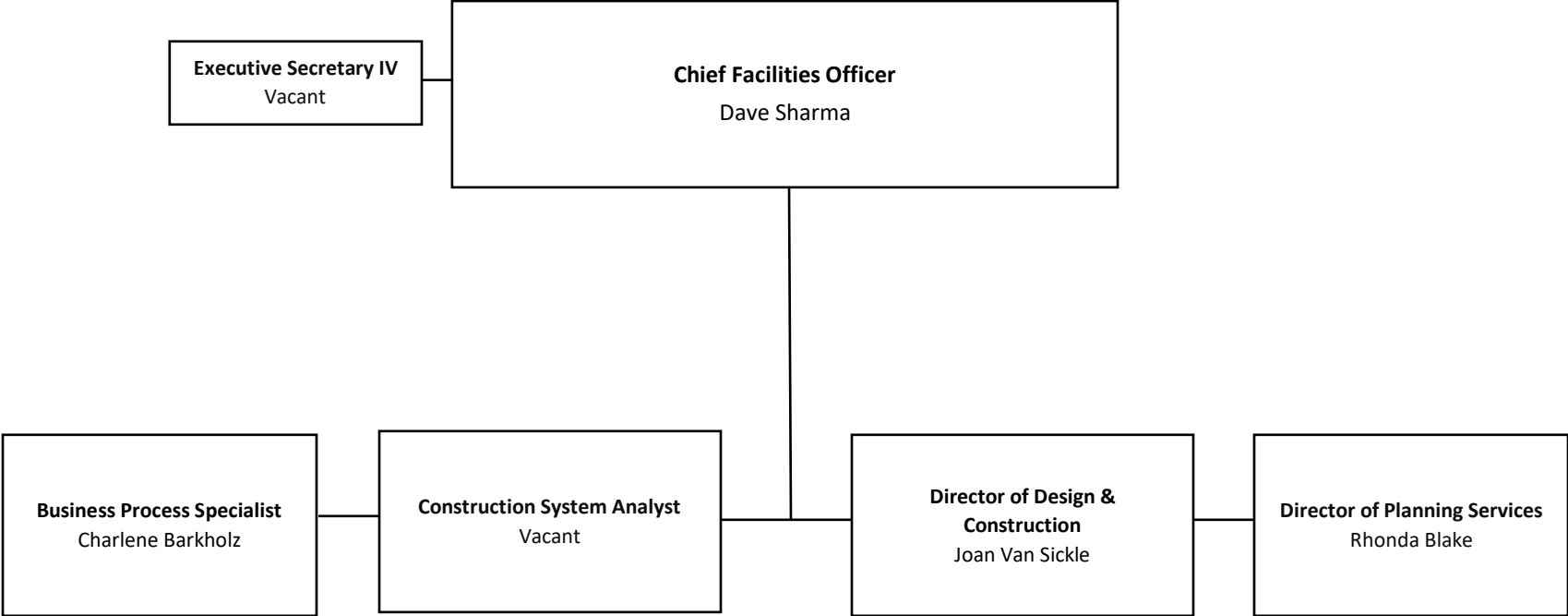
Revised 01.24.25

# RESEARCH, EVALUATION, & ACCOUNTABILITY

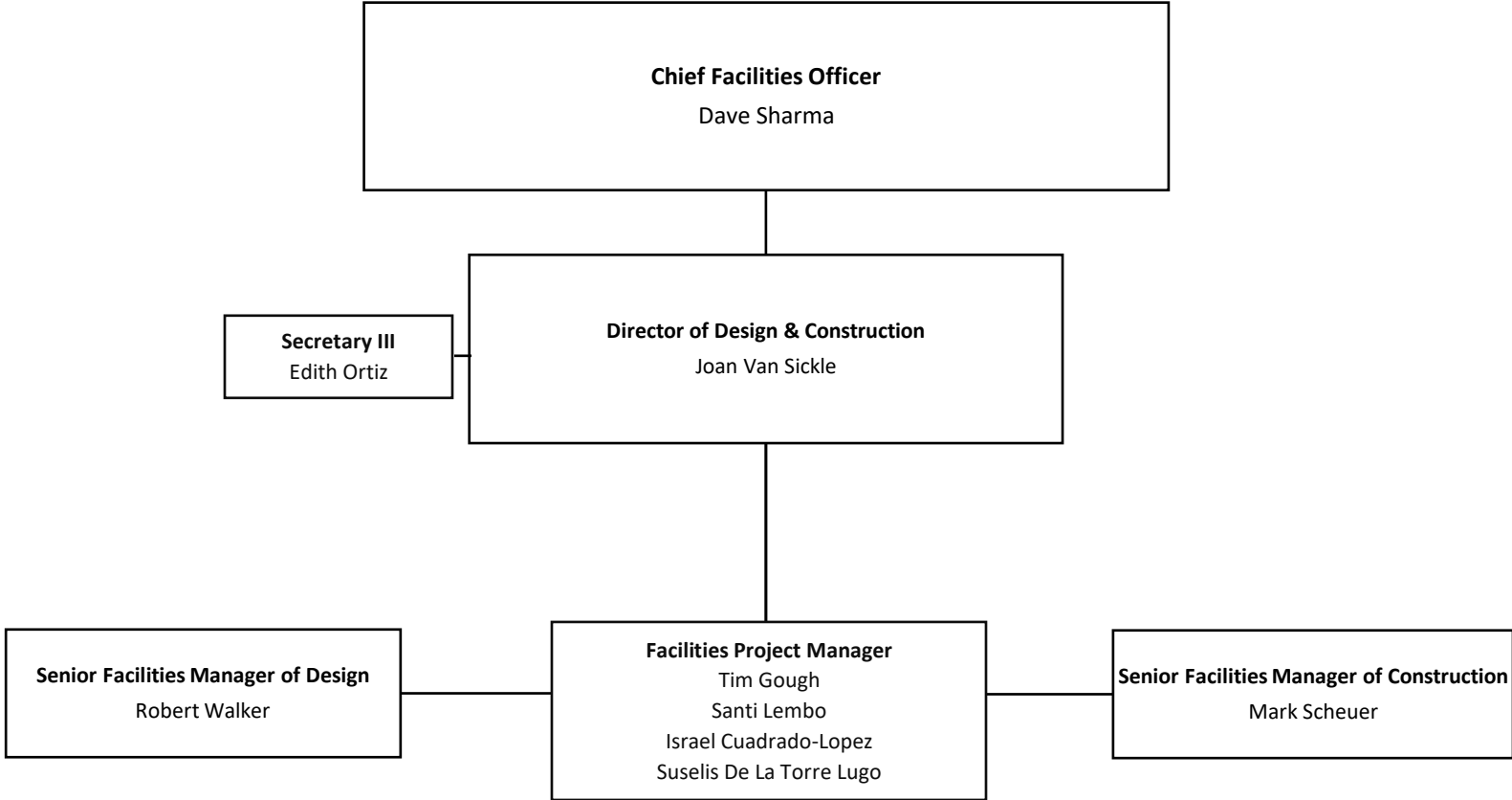




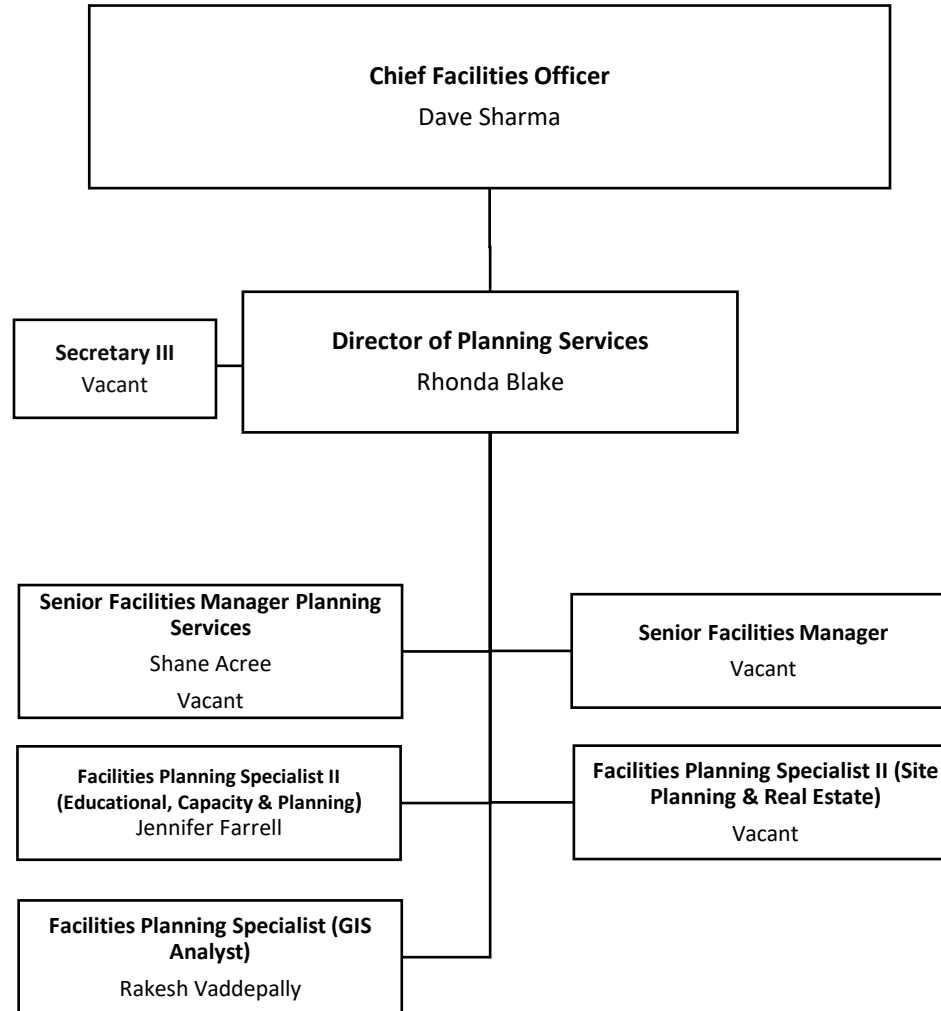
# FACILITIES



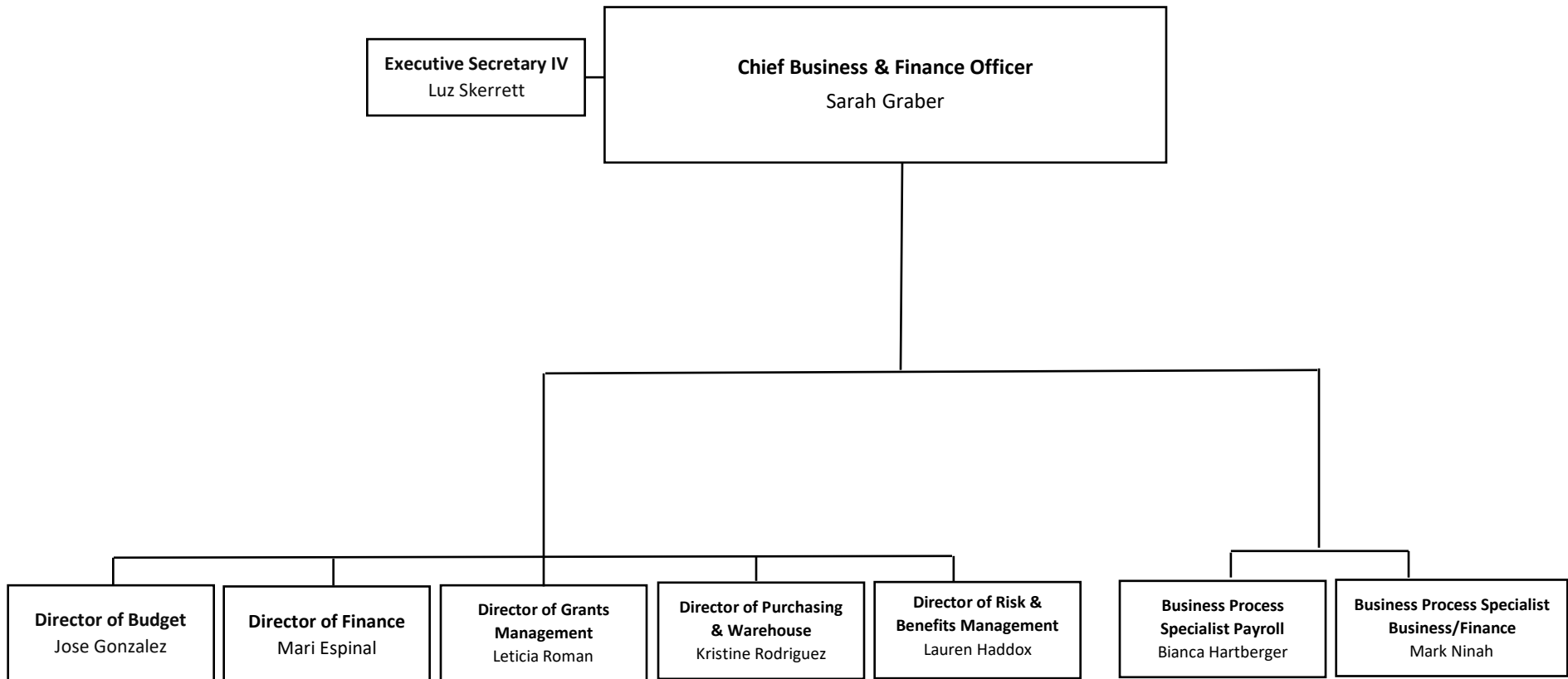
# DESIGN & CONSTRUCTION



# PLANNING SERVICES

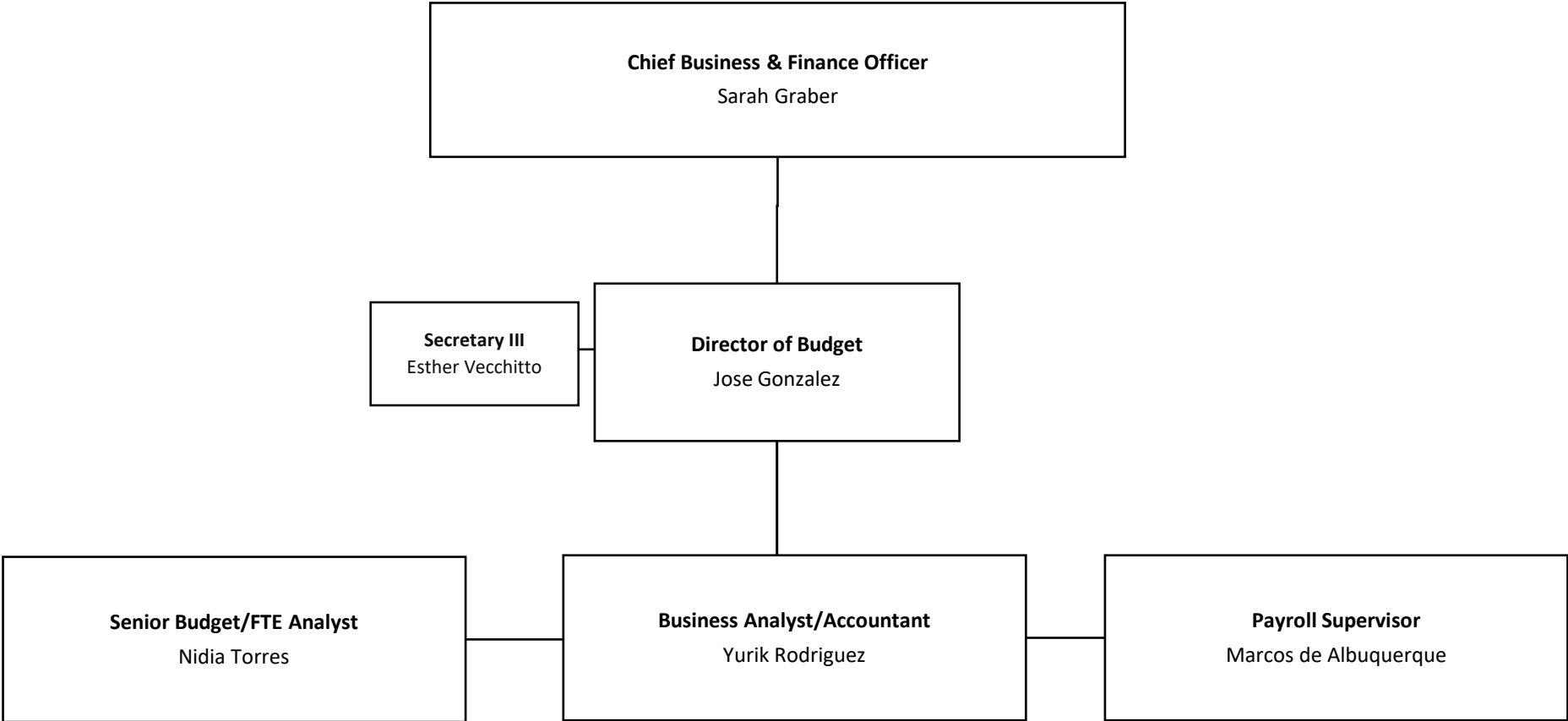


# BUSINESS & FISCAL SERVICES

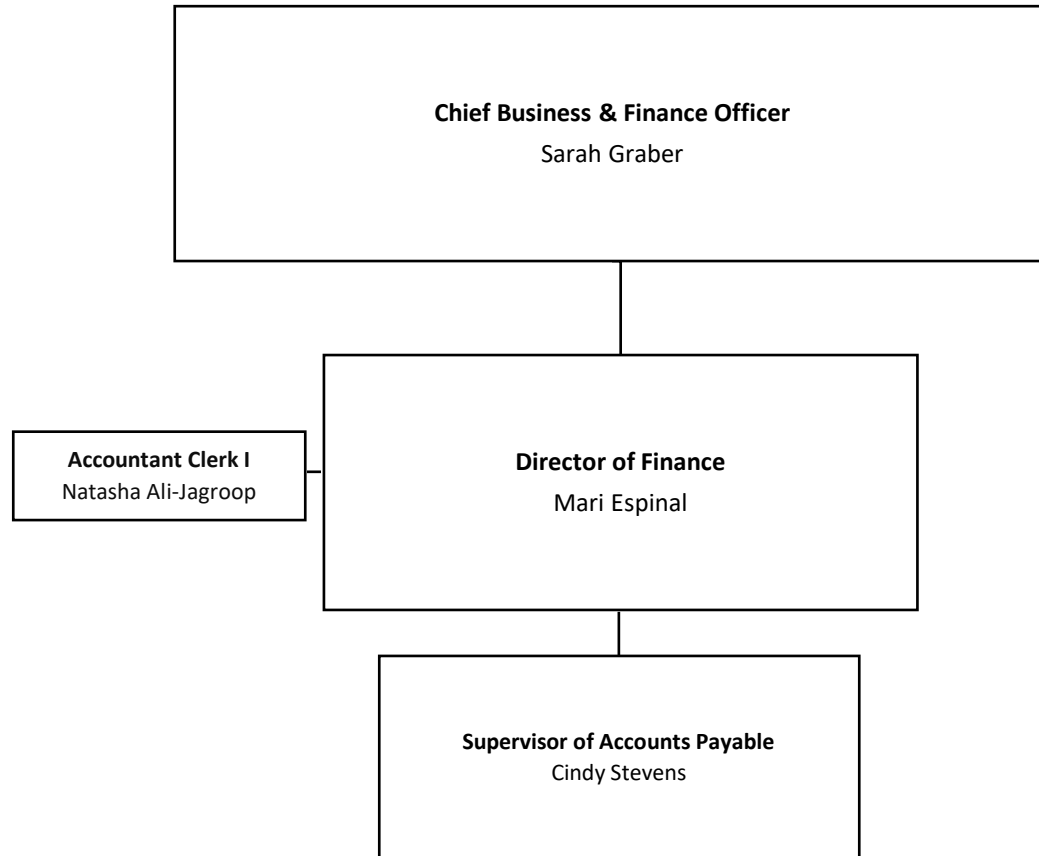


Revised 01.24.25

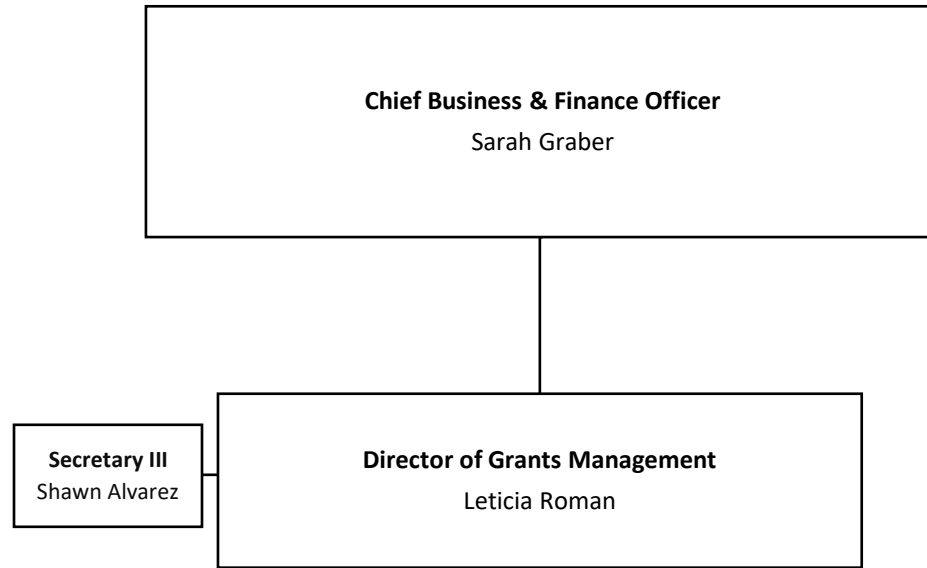
# BUDGET



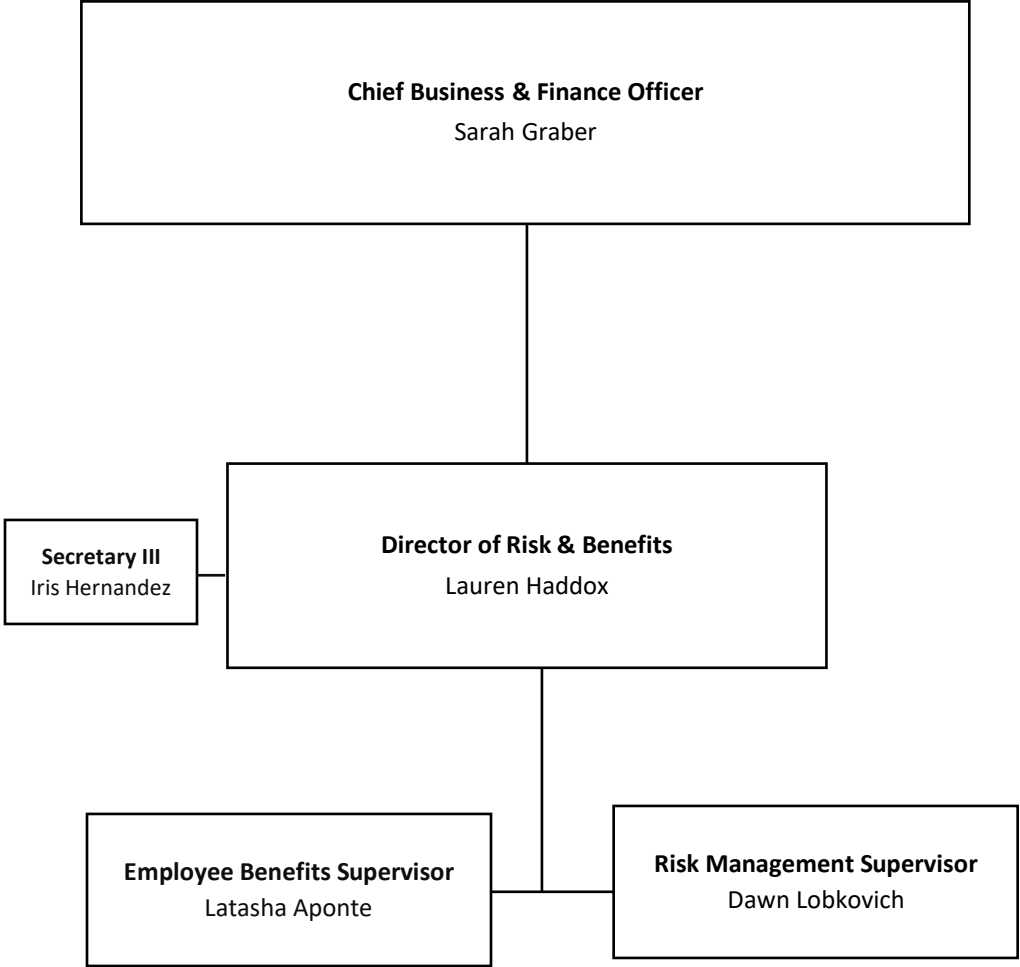
# FINANCE



# GRANTS MANAGEMENT

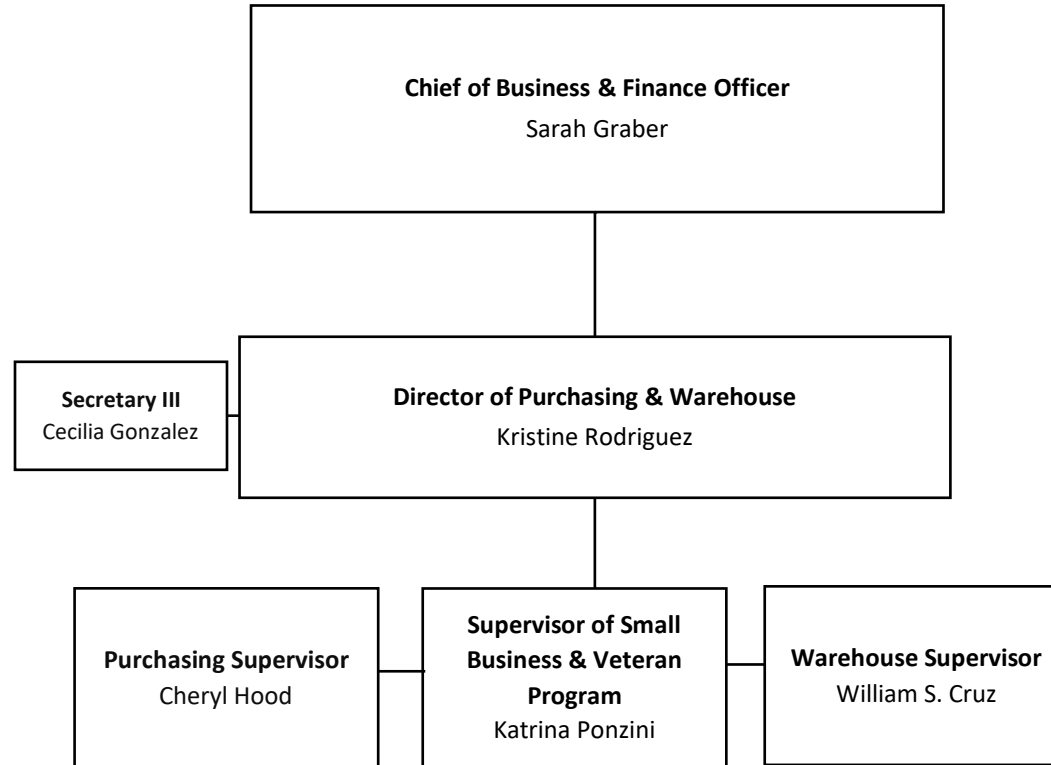


# RISK & BENEFITS

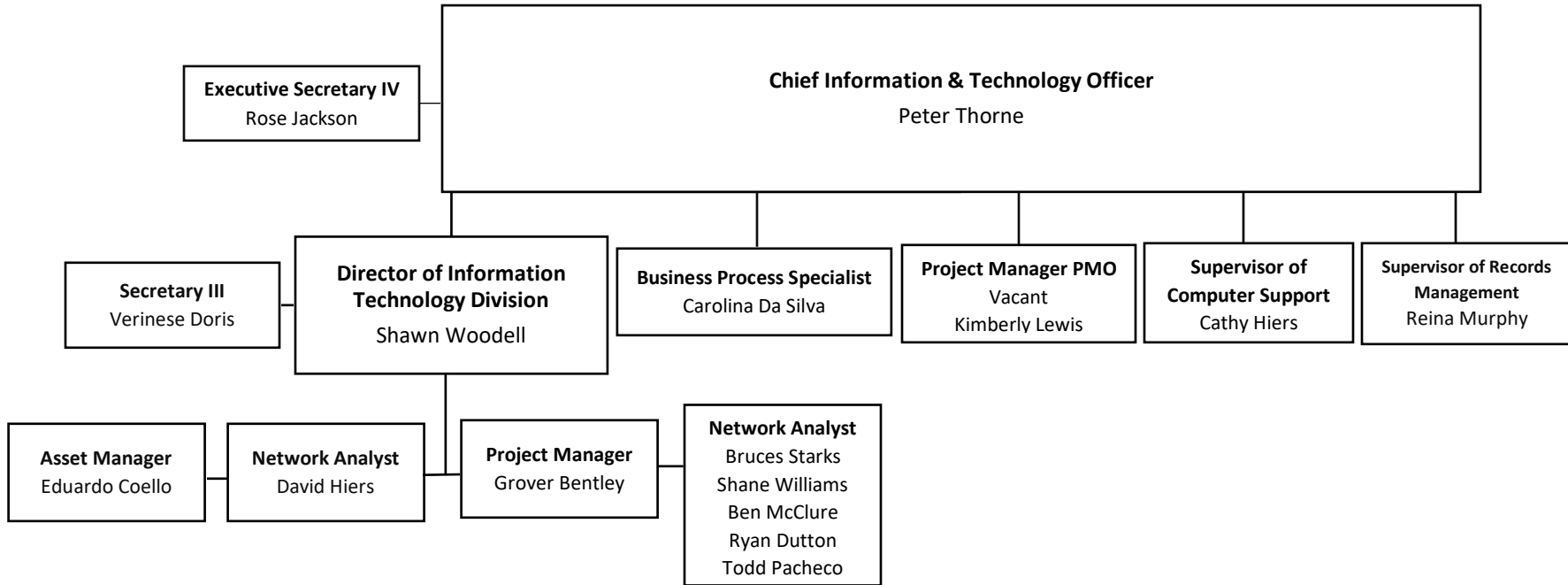




# PURCHASING & WAREHOUSE

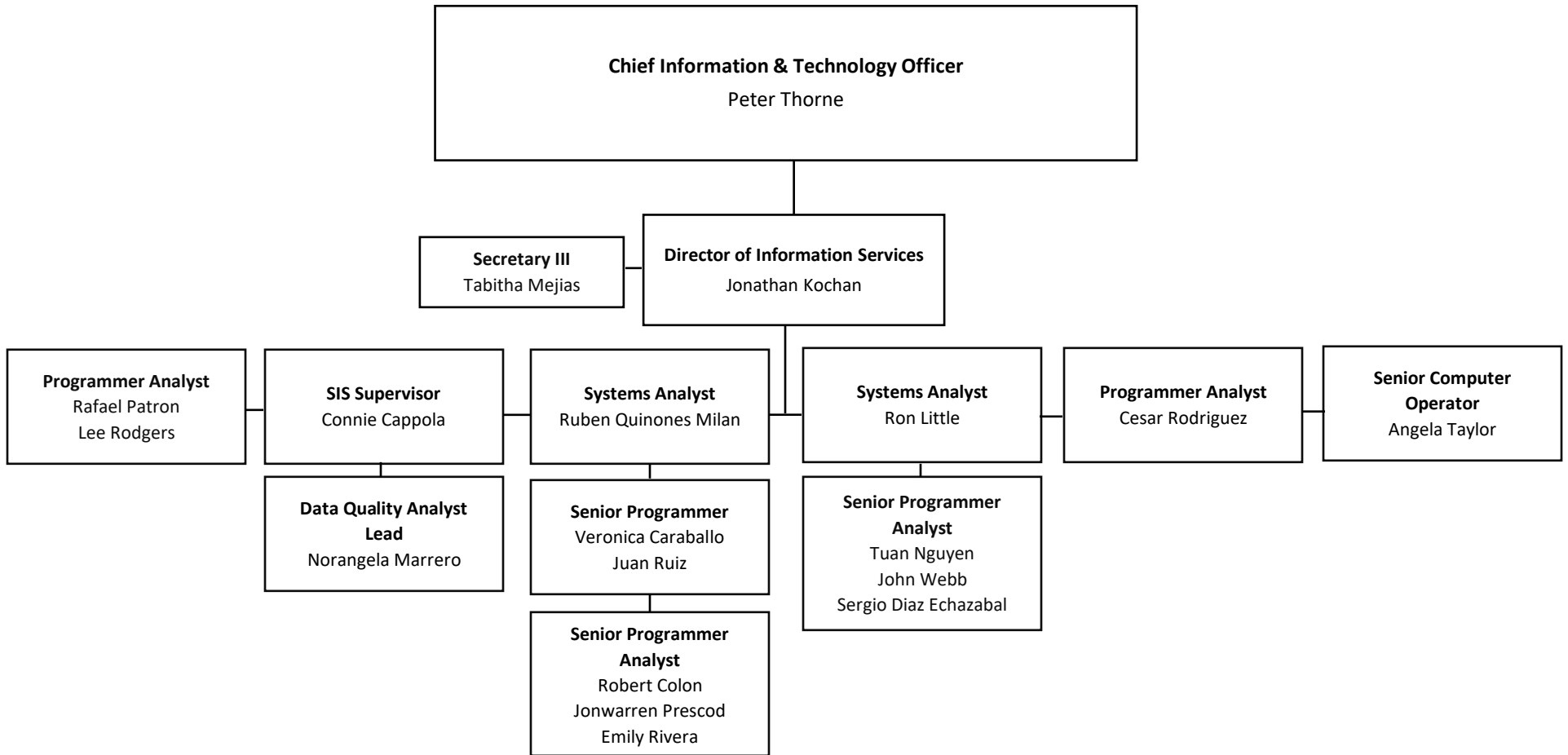


# INFORMATION TECHNOLOGY DIVISION



Revised 01.24.25

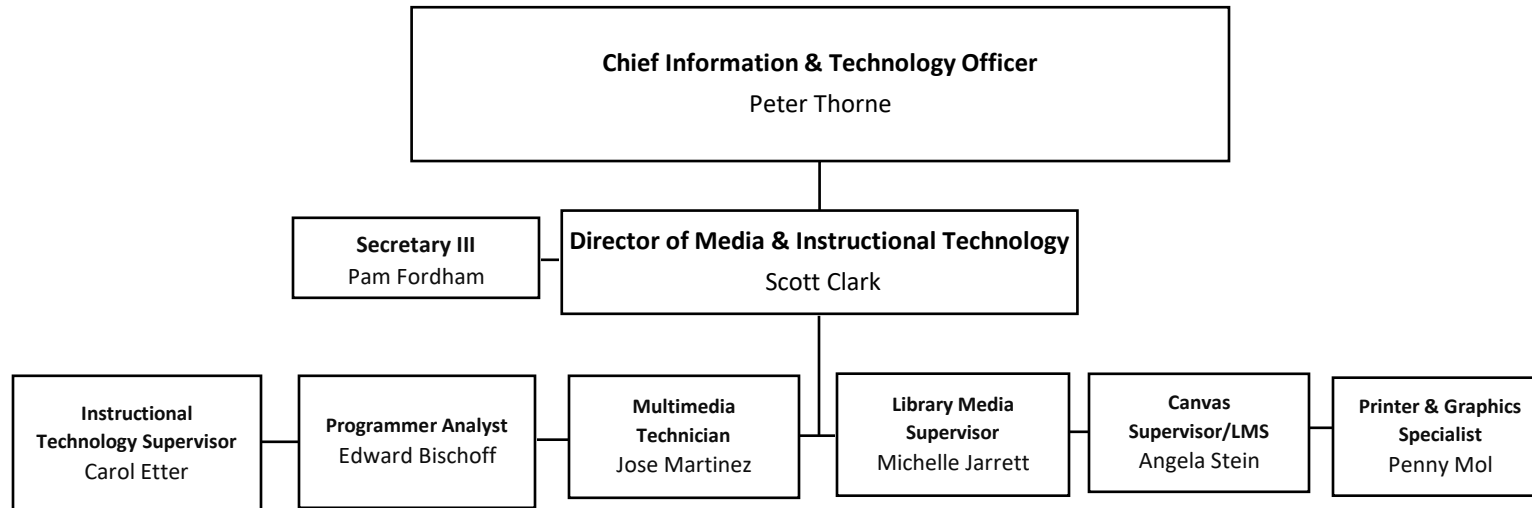
# INFORMATION SERVICES



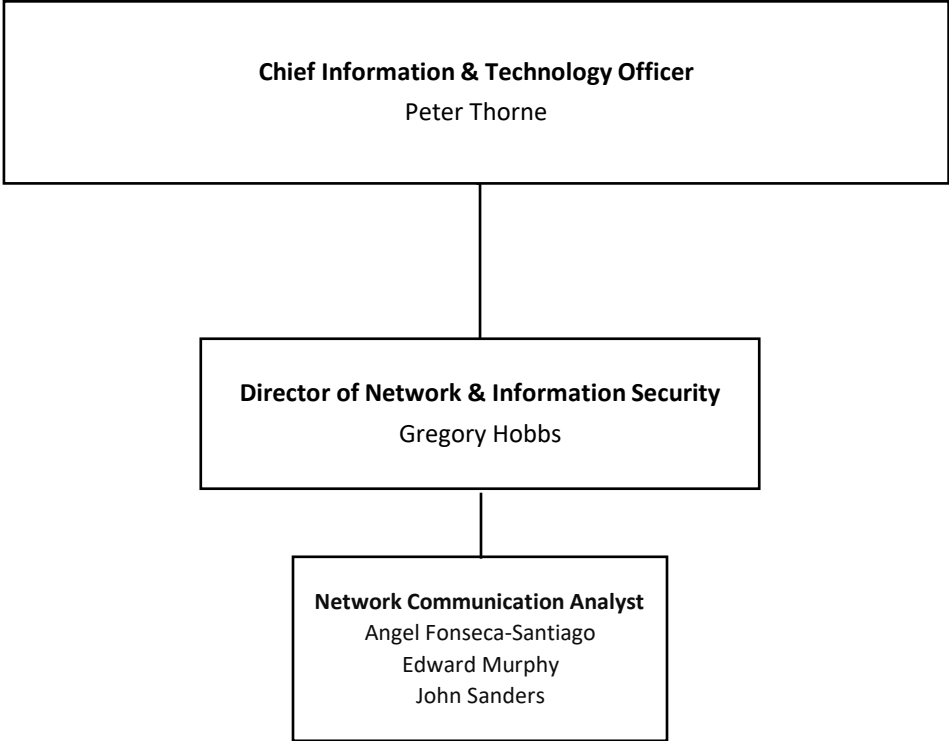
pln

Revised 01.24.25

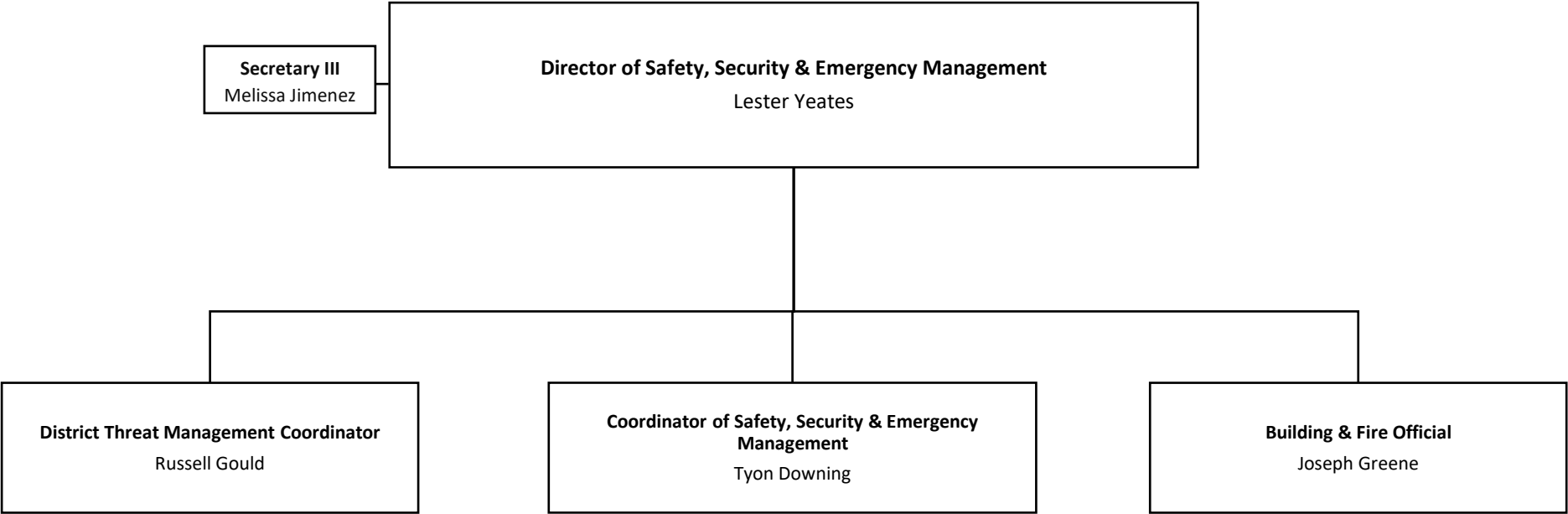
# MEDIA & INSTRUCTIONAL TECHNOLOGY



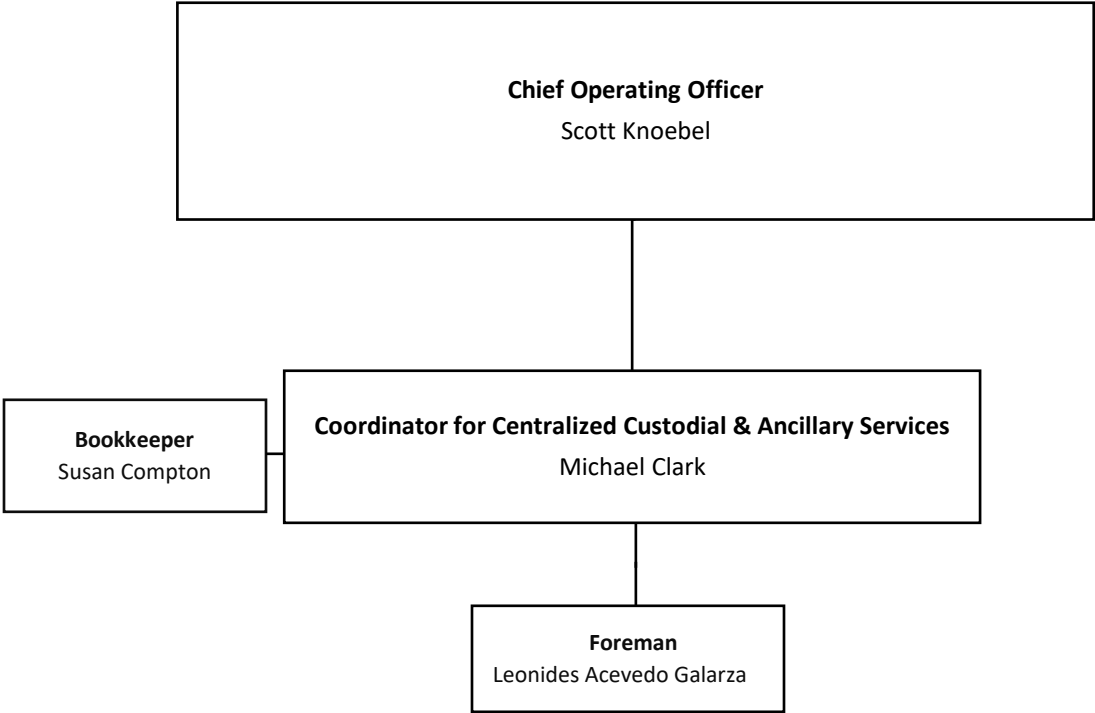
# NETWORK & INFORMATION SECURITY



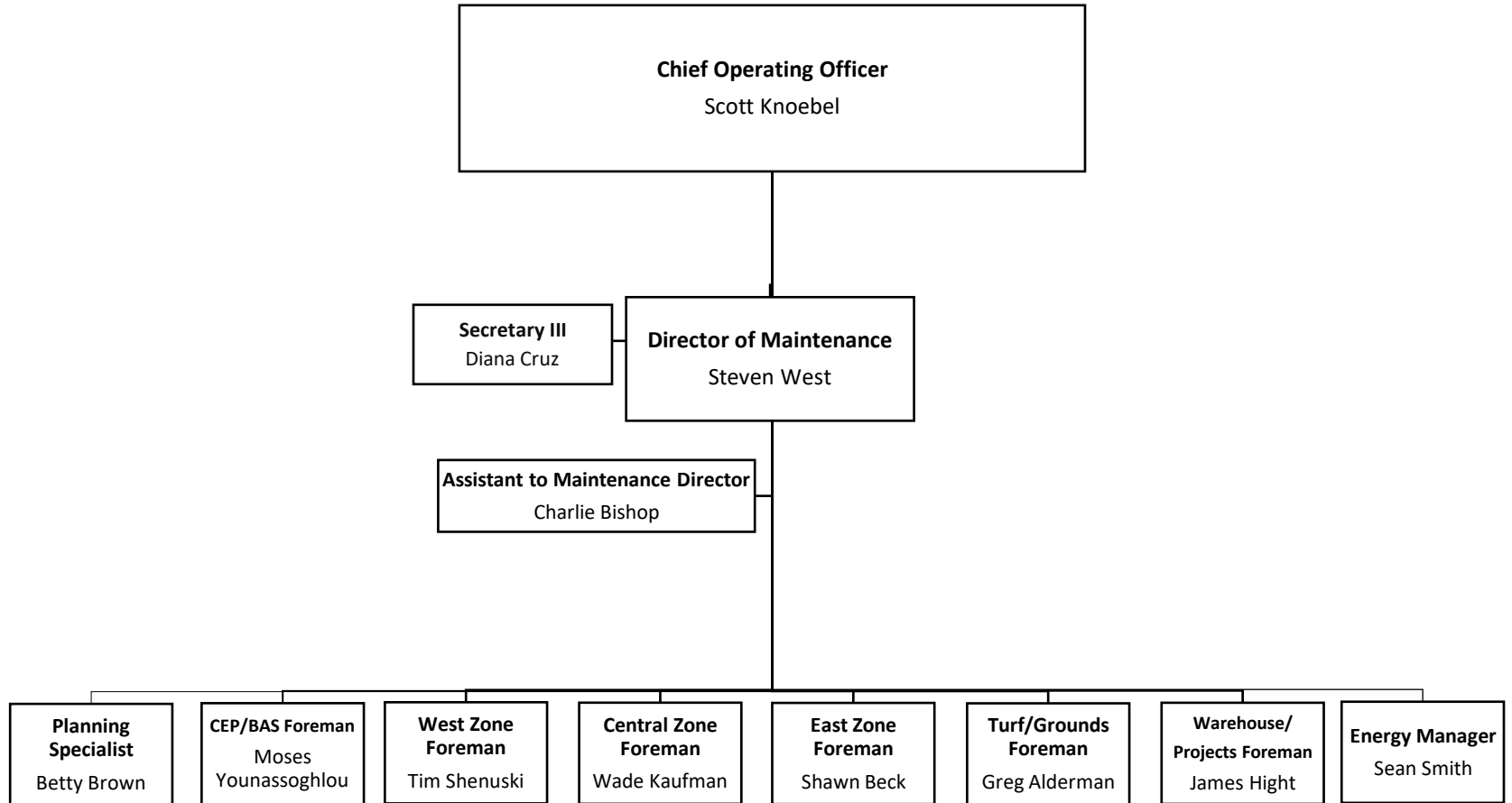
# SAFETY, SECURITY & EMERGENCY MANAGEMENT



# CENTRALIZED CUSTODIAL & ANCILLARY SERVICES

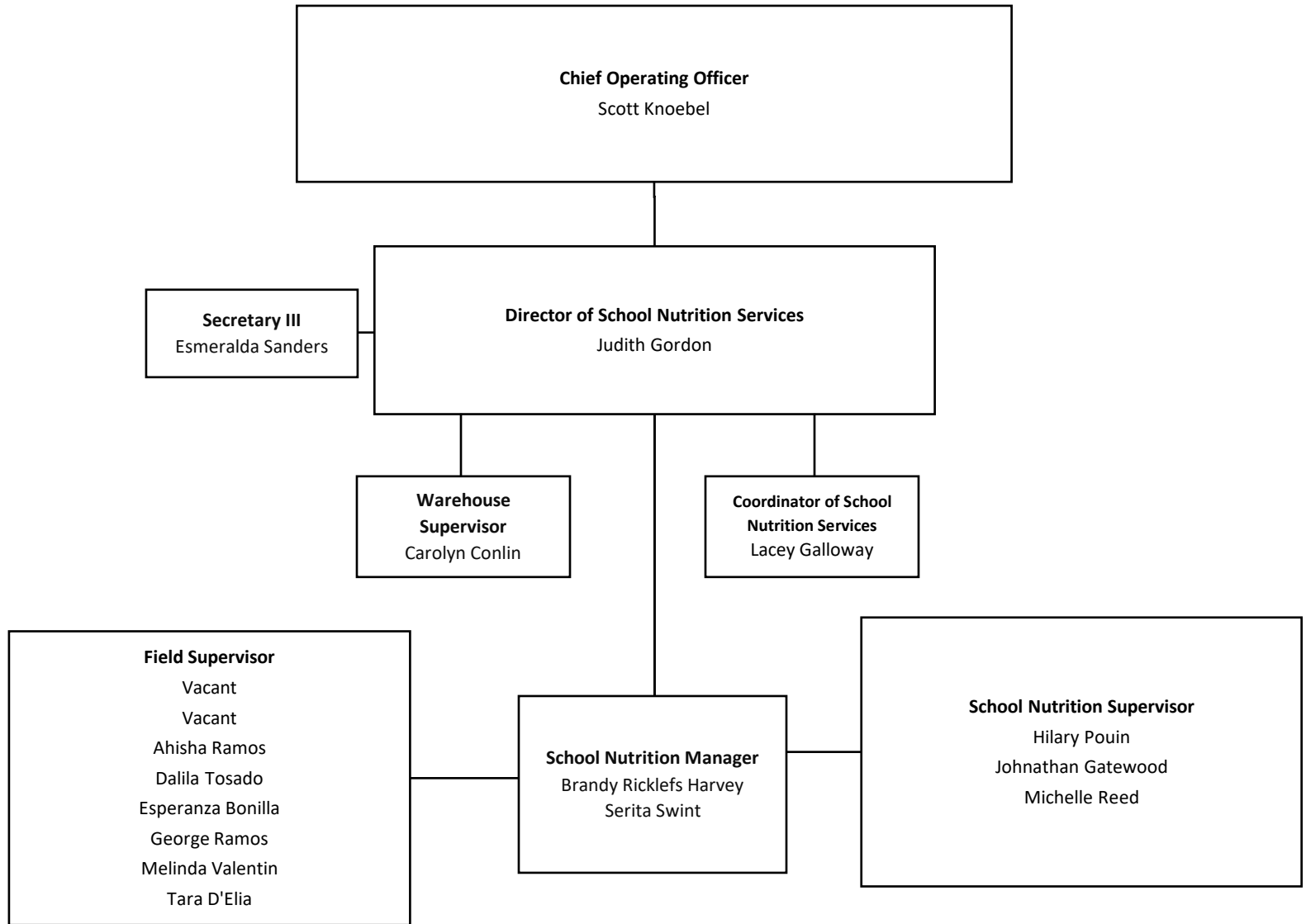


# MAINTENANCE

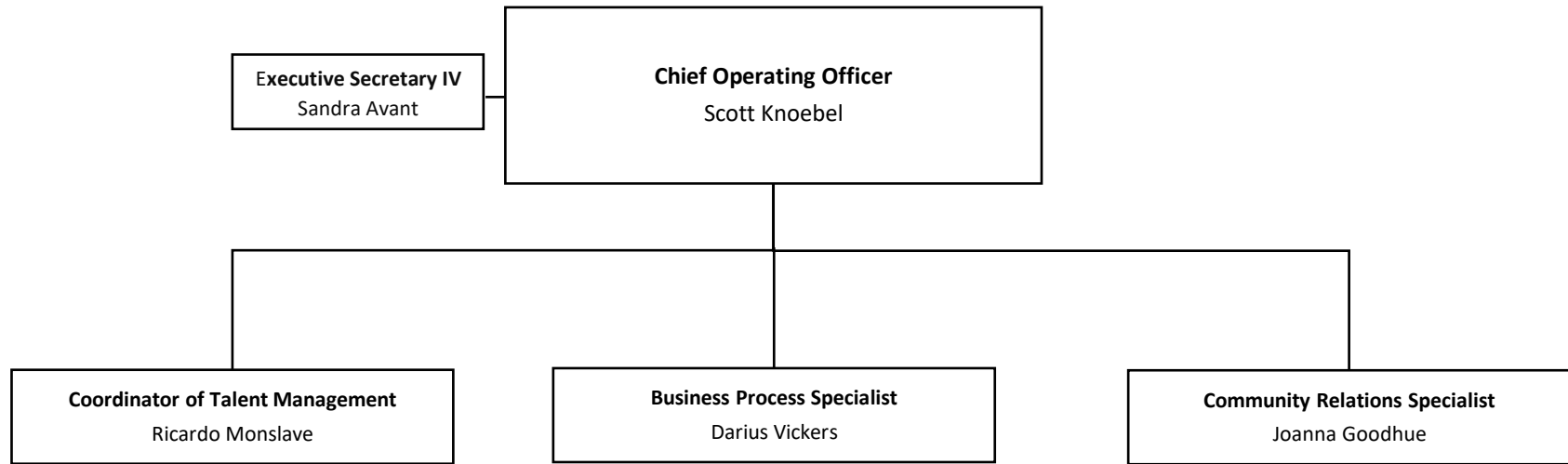




# SCHOOL NUTRITION SERVICES



# SCHOOL OPERATIONS



Revised 01.24.25

# TRANSPORTATION

