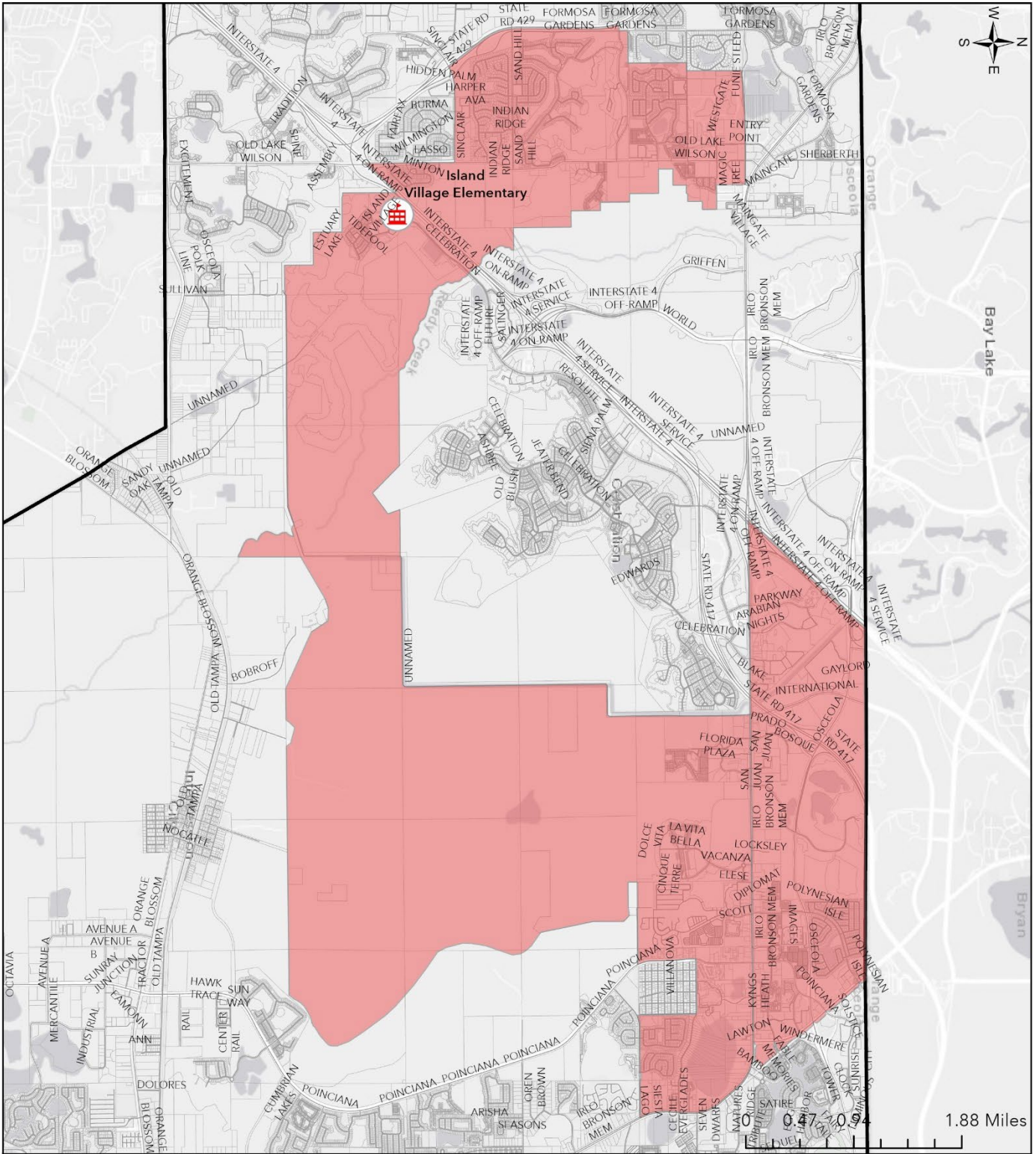




The School District of Osceola County, Florida
2024/2025 School Year
Attendance Zone Boundary Description

Island Village Elementary School

All students enclosed by the boundary beginning at the intersection of US Highway 192 (W. Irlo Bronson Memorial Highway) and Funie Steed Road, then west and down the middle of Funie Steed Road to a point just west of the northwestern most point of the Westgate Villas and east of Sleeping Dragon Lane and Sea Pearl Circle, then south to Livingston, west of Windsor Hills and east of Rolling Hills Estates, continuing south to a point just north of Mystic Dunes Lane, then west and north of Mystic Dunes Lane and, including all homes and streets opening onto Mystic Dunes Lane, to the intersection of Mystic Dunes Lane and Formosa Gardens Boulevard, then south traveling east of State Road 429 to Sinclair Road, then east down the middle of Sinclair Road to the intersection of Sinclair Road and N. Old Lake Wilson Road, and then south and down the middle of N. Old Lake Wilson Road to I-4, then east along I-4 to the southwestern most point of the Celebration Development of Regional Impact (CDRI), then southeast along the CDRI, (including the CDRI), to the C-1 Canal, continuing east just north of all streets and homes opening on to Old Tampa Highway, and excluding Intercession City, to Bonnet Creek, then northwest along Shingle Creek to a point just north of Camelot Country Way (excluding all homes with a Camelot Country Way address) and south of all streets and homes opening onto US Highway 192 (W. Irlo Bronson Memorial Highway), then east to N. Poinciana Boulevard then north and down the middle of N. Poinciana Boulevard to the intersection of Pam Road and N. Poinciana Boulevard, then east and north of Pam Road, excluding all homes with a Pam Road address, to a point just east of Bradley Drive and Pam Road changes to Lake Cecile Drive, then south but west of the southwestern most part of Chatham Park to a point just north of Siesta Lago Drive, excluding all homes with a Siesta Lago Drive address, then east and north of all homes opening on the north side of Siesta Lago Drive to the intersection of Siesta Lago Drive and US Highway 192 (W. Irlo Bronson Memorial Highway), then west and down the middle US Highway 192 (W. Irlo Bronson Memorial Highway) to the intersection of US Highway 192 (W. Irlo Bronson Memorial Highway) and Vineland Road, then north but east along Vineland Road, inclusive of the Public Easement Access, to the intersection of W. Osceola Parkway, then north along Vineland Road to the intersection of the Orange County line, then west along the Osceola/Orange County line to Interstate 4, then southwest along Interstate 4 to US Highway 192 (W. Irlo Bronson Memorial Highway), then east to Bonnet Creek, then south and west along Bonnet Creek to the C-1 Canal to Reedy Creek, then west along Reedy Creek, then north and west (including all homes and streets opening on N. Old Lake Wilson Road), then north to the intersection of N. Old Lake Wilson Road and US Highway 192 (W. Irlo Bronson Memorial Highway) to the point of beginning.



Island Village Elementary School Attendance Zone Boundary

Valid only for the 2024/2025 School Year

Created by Planning Services
Revised: 4/16/2024 - 7:56 AM
By: R. Newton

Disclaimer: All data, information, and maps are provided "as is" without any warranty or representation of accuracy, timeliness, or completeness. The School District of Osceola County, Florida (the "School District") cannot accept any responsibility for errors, omissions, or positional accuracy. The School District specifically disclaims any warranty, either expressed or implied, including, without limitation, the implied warranties of merchantability and fitness for a particular purpose. The burden of determining accuracy, timeliness, merchantability, and fitness for a particular use rests solely on the requestor, and the requestor assumes all risk as to quality and performance. In no event will the School District or its staff be liable for any direct, indirect, incidental, special, consequential, or other damages, including without limitation, loss of profit, arising out of the use of the data, information, and maps even if the School District has been advised of the possibility of such damages. The requestor acknowledges and accepts the limitations of the data, information, and maps, including, without limitation, the fact that the data, information, and maps are dynamic and are in a constant state of maintenance, correction, and update.