

THE SCHOOL DISTRICT OF OSCEOLA COUNTY, FLORIDA

817 Bill Beck Boulevard • Kissimmee • Florida 34744-4492
Phone: 407-870-4600 • Fax: 407-870-4010 • www.osceolaschools.net

SCHOOL BOARD MEMBERS

- District 1 – Teresa “Terry” Castillo – Chair
407-577-5022
District 2 – Julius Melendez – Vice Chair
321-442-2862
District 3 – Jon Arguello
407-433-9082
District 4 – Clarence Thacker
407-870-4009
District 5 – Robert Bass



407-870-4009

Superintendent of Schools

Dr. Debra P. Pace

Agenda

Business Advisory Board Meeting
@ The Bill Collins Conference Room
817 Bill Beck Boulevard
Kissimmee, FL 34744

Wednesday, December 8, 2021
7:30 A.M.

1. Approve Minutes of October 27, 2021
2. Educational System Impact Fee Study
3. Review Impact Fee & Sales Tax Report
4. Budget Update
5. Facilities Update
6. Next regular meeting: January 26, 2022

BUSINESS ADVISORY BOARD MINUTES
OCTOBER 27, 2021

Members Present: Mel Welch, Turner Wallis, Olga Sanchez Fuentes, Greg Filak, Shawn Hindle

Others/Guests: Debra Pace, Sarah Graber, Marc Clinch, Mark Lockard, Maribel Vallellanes, Rhonda Blake, Luz Skerrett

Location: Bill Collins Conference Room

Mr. Welch called the meeting to order.

- **Minutes**

The minutes from the September 22, 2021 meeting were approved with all ayes.

- **Superintendent**

The Superintendent mentioned that Mr. Lockard is retiring. She commended his service to the District and to the Business Advisory Board. She provided a brief COVID 19 summary and stated she is waiting on the CDC in regards to administering the vaccine to students 5 through 11. Dr. Pace identified the current challenges with Transportation. She mentioned changes were made to bus routes to improve bus route efficiency and to comply with the bus driver contract as the District continues to experience a severe shortage of school bus drivers.

Mr. Filak suggested partnering with other school district to compile a letter to the Governor requesting assistance by incorporating the National Guards.

- **Impact Fee and Sales Tax Reports**

Maribel Vallellanes reviewed the Impact Fee & Sales Tax Reports for the year ending August 31, 2021.

Impact Fee Revenues

Collections approx. **\$ 14M**

Impact Fee Expenditures

Expenditures Approx. **\$ 2.5M**

Infrastructure Sales Surtax Revenue

Collections approx. **\$ 3.6M**

Infrastructure Sales Surtax Expenditures (1/4 cent)

Expenditures approx. **\$ 195,000K**

School Capital Outlay Surtax Revenue

Collections approx. **\$ 7.2M**

School Capital Outlay Surtax Expenditures (1/2 cent)

Expenditures approx. **\$ 1M**

There was a discussion regarding future growth within Osceola County and how that will affect the School District.

Budget Update

Ms. Graber

BUSINESS ADVISORY BOARD MINUTES
OCTOBER 27, 2021

Ms. Graber mentioned that the final budget was approved in September 2021. She shared that enrollment is up above projection with approximately 1000 students for traditional school, approximately 500 – 600 for charter schools and roughly 1000 students enrolled in private schools through the new Family Empowerment Scholarship Voucher Program. She stated the School District's is expected to the funds come through soon. Sarah commented this stance aided with bargaining negotiations with the Teacher Ratification and the Unions.

- **Facilities Update & Planning Department**

Mr. Clinch thanked the Board for their continued support. He reiterated the Superintendent's praise to Mr. Lockard and his years of service to the Facilities Department and the District.

Mr. Clinch provided the Board a Pin Map of upcoming Project Locations. He presented several Projects in Planning, for example Westside Relief K8 School, the comprehensive renovations of Osceola County School for the Arts and Reedy Creek Elementary, and Transportation East Project. Mr. Clinch mentioned that current construction costs are driving up the budget. He mentioned the recent budget adjustment for Gateway High School Comprehensive Project.

Mr. Lockard presented a Construction and Facilities Update. Several aerial pictures were presented on the progress at Canoe Creek K-8, Harmony High School's Vet Program, DAS Radio Installation at Westside K8, and Secure Lobby Projects from several schools.

There was a lengthy discussion on the inflated costs of land acquisitions for future schools. Rhonda Blake provided a brief update on redistricting changes approved on the October 26, 2021 Osceola County's Redistricting Advisory Committee Meeting.

BAB Meeting Dates

The Business Advisory Board has agreed to meet the 4th Wednesday of every month. The Board decided to cancel the November meeting due to the Thanksgiving holiday. The next meeting will be held on Wednesday, December 8, 2021, @ 7:30 a.m. in the Bill Collins Conference Room.

**SDOC Business Advisory Board
Impact Fee Revenue
For the period ending 10/31/2021**

| MONTH | Fiscal Year | | | | | | | |
|--------------|----------------------|--------------|----------------------|--------------|----------------------|--------------|----------------------|--------------|
| | 2018 - 2019 | | 2019 - 2020 | | 2020 - 2021 | | 2021 - 2022 | |
| | Revenue | Units* | Revenue | Units* | Revenue | Units* | Revenue | Units* |
| July | \$ 2,385,492 | 267 | \$ 10,863,004 | 1,123 | \$ 6,324,659 | 675 | \$ 7,867,108 | 1,084 |
| August | 4,726,773 | 488 | 5,697,497 | 628 | 6,155,126 | 586 | 14,050,633 | 1,461 |
| September | 7,804,166 | | 7,885,645 | 797 | 5,030,351 | 541 | 7,146,897 | 638 |
| October | 7,679,304 | 713 | 6,923,523 | 731 | 7,071,236 | 887 | 14,926,941 | 1,357 |
| November | 9,018,833 | 952 | 5,858,840 | 584 | 4,633,389 | 492 | | |
| December | 6,132,620 | 610 | 5,076,853 | 560 | 5,074,262 | 563 | | |
| January | 4,893,678 | 483 | 4,668,053 | 547 | 3,681,511 | 398 | | |
| February | 6,609,701 | 685 | 4,722,382 | 458 | 5,068,058 | 548 | | |
| March | 6,213,597 | 610 | 7,787,661 | 837 | 9,076,345 | 858 | | |
| April | 6,268,996 | 635 | 7,099,622 | 633 | 9,651,165 | 1,152 | | |
| May | 6,613,496 | 706 | 3,627,116 | 378 | 11,320,247 | 1,065 | | |
| June** | 6,062,604 | 621 | 4,177,704 | 481 | 10,042,573 | 958 | | |
| TOTAL | \$ 74,409,260 | 6,770 | \$ 74,387,899 | 7,757 | \$ 83,128,923 | 8,723 | \$ 43,991,580 | 4,540 |

*Number of Units as computed based on reports received by the City of Kissimmee, City of St. Cloud, and Osceola County

**Accrual

| Number of Units Detail | | | | |
|--------------------------|--------------|----------------|-------------------|------------------|
| Type of dwelling | Total Units | Osceola County | City of Kissimmee | City of St Cloud |
| Single Family | 441 | 326 | 12 | 103 |
| Single Family-S/T rental | 0 | 0 | 0 | 0 |
| Single Family-Credits | 0 | 0 | 0 | 0 |
| Townhomes | 174 | 99 | 4 | 71 |
| Townhomes-S/T rental | 0 | 0 | 0 | 0 |
| Condominiums | 4 | 4 | 0 | 0 |
| Multifamily | 736 | 736 | 0 | 0 |
| Mobile Homes | 2 | 2 | 0 | 0 |
| Total | 1,357 | 1,167 | 16 | 174 |

| Budget | |
|--------------------|---------------|
| Forecasted Revenue | \$ 70,000,000 |

| Fund Balance | |
|-----------------------|----------------|
| Actual Fund Balance | \$ 212,373,785 |
| Budgeted Fund Balance | \$ 203,804,963 |

**SDOC Business Advisory Board
Impact Fee Expenditures
For the period ending 10/31/2021**

| PROJECT NAME | Fiscal Year | | | |
|--|----------------------|----------------------|----------------------|---------------------|
| | 2018 - 2019 | 2019 - 2020 | 2020 - 2021 | 2021 - 2022 |
| Buses | 1,850,948 | 822,176 | 113,116 | |
| Canoe Creek K-8 | | 1,167,050 | 14,598,151 | 3,725,295 |
| Celebration Island Village | 709,005 | 40,856 | 23,725 | 3,356 |
| Discovery Intermediate Space Reconfiguration | | | | |
| Harmony Middle School - "Middle School AA" | 26,882,586 | 2,607,661 | 52,692 | |
| Kindred K-8 | 2,125 | | | |
| Land-Nova Road a/k/a Newman property | | | 8,150,000 | |
| NeoCity Academy | 13,936,386 | 2,578,168 | | |
| Poinciana High School Wing Addition | | 6,023,094 | 1,656,129 | 2,100 |
| Tohopekaliga High School | 8,587,940 | 113,141 | 9,350 | |
| Westside K-8 Renovation | | | | |
| TOTAL | \$ 51,968,990 | \$ 13,352,146 | \$ 24,603,163 | \$ 3,730,751 |

**SDOC Business Advisory Board
School Capital Outlay Surtax Revenue (1/2 Cent)
For the period ending 10/31/2021**

| MONTH | Fiscal Year | | | |
|--------------|----------------------|----------------------|----------------------|----------------------|
| | 2018 - 2019 | 2019 - 2020 | 2020 - 2021 | 2021 - 2022 |
| July | \$ 3,247,344 | \$ 3,306,679 | \$ 2,707,399 | \$ 4,233,071 |
| August | 2,362,698 | 2,454,871 | 1,882,705 | 3,005,749 |
| September | 2,107,519 | 2,186,347 | 1,675,718 | 2,424,595 |
| October | 2,906,958 | 2,945,535 | 2,964,929 | 3,958,839 |
| November | 2,183,394 | 2,346,396 | 1,911,260 | |
| December | 2,252,301 | 2,355,790 | 1,940,911 | |
| January | 3,545,302 | 3,683,419 | 3,485,166 | |
| February | 2,281,362 | 2,446,420 | 1,999,027 | |
| March | 2,321,866 | 2,474,997 | 2,045,878 | |
| April | 3,750,979 | 2,812,989 | 4,174,227 | |
| May | 2,496,898 | 1,116,246 | 2,805,030 | |
| June* | 2,420,032 | 1,461,649 | 2,731,593 | |
| TOTAL | \$ 31,876,654 | \$ 29,591,338 | \$ 30,323,843 | \$ 13,622,254 |

| Budget | |
|----------------------------------|---------------|
| Final Budget: Forecasted Revenue | \$ 30,000,000 |

| Fund Balance | |
|-----------------------|---------------|
| Actual Fund Balance | \$ 74,191,963 |
| Budgeted Fund Balance | \$ 35,597,100 |

*Accrual

**SDOC Business Advisory Board
Infrastructure Sales Surtax Revenue (1/4 Cent)
For the period ending 10/31/2021**

| MONTH | Fiscal Year | | | |
|--------------|----------------------|----------------------|----------------------|---------------------|
| | 2018 - 2019 | 2019 - 2020 | 2020 - 2021 | 2021 - 2022 |
| July | \$ 1,626,416 | \$ 1,653,542 | \$ 1,353,919 | \$ 2,120,111 |
| August | 1,187,951 | 1,229,646 | 940,105 | 1,503,529 |
| September | 1,051,985 | 1,094,544 | 838,579 | 1,212,424 |
| October | 1,460,827 | 1,473,660 | 1,482,953 | 1,979,577 |
| November | 1,094,073 | 1,173,745 | 954,858 | |
| December | 1,128,780 | 1,179,052 | 971,622 | |
| January | 1,774,559 | 1,842,450 | 1,742,835 | |
| February | 1,141,399 | 1,224,039 | 1,000,240 | |
| March | 1,164,505 | 1,237,741 | 1,023,877 | |
| April | 1,876,971 | 1,406,608 | 2,085,479 | |
| May | 1,251,681 | 558,604 | 1,405,131 | |
| June* | 1,213,361 | 731,997 | 1,365,888 | |
| TOTAL | \$ 15,972,508 | \$ 14,805,628 | \$ 15,165,486 | \$ 6,815,642 |

| Budget | |
|----------------------------------|---------------|
| Final Budget: Forecasted Revenue | \$ 15,000,000 |

| Fund Balance | |
|-----------------------|---------------|
| Actual Fund Balance | \$ 32,910,603 |
| Budgeted Fund Balance | \$ 624,642 |

*Accrual

SDOC Business Advisory Board
School Capital Outlay Surtax Expenditures (1/2 Cent)
For the period ending 10/31/2021

| Type of Expenditure | Fiscal Year | | | |
|---|---------------|---------------|---------------|------------|
| | 2018-2019 | 2019-2020 | 2020-2021 | 2021-2022 |
| Debt Service | \$ 7,037,194 | \$ 7,035,848 | \$ 7,777,023 | 13,650,931 |
| Comprehensive Renovations: | | | | |
| Denn John Middle School | 22,605,913 | 11,114,867 | 2,745,381 | 5,000 |
| Gateway High School | 71,765 | 388 | 756,836 | 643,623 |
| Michigan Avenue Elementary School | 19,720,411 | 1,639,336 | 1,152,483 | - |
| Reedy Creek Elementary School | | | 16,233 | 1,798 |
| St. Cloud Middle School | 2,417,580 | 23,942,794 | 8,923,615 | - |
| Subtotal Comprehensive Renovations | \$ 44,815,669 | \$ 36,697,385 | \$ 13,594,548 | 650,421 |
| Other maintenance & renovation projects: | | | | |
| Carpet Replacements/Flooring: | | | | |
| Adult Learning Center | \$ - | \$ - | \$ 36,153 | - |
| Boggy Creek Elementary School | - | 11,125.00 | | |
| Celebration High School | | | | |
| Celebration K-8 School | | | 127,599.00 | 167,707 |
| Chestnut Elementary School | | | 188,853.00 | 110,489 |
| Cypress Elementary School | | | 36,132 | |
| Deerwood Elementary School | | 455,336 | | |
| Discovery Intermediate School | 93,668 | 54,027 | | |
| East Lake Elementary School | | 42,221 | | |
| Gateway High School | | | | |
| Harmony Community School | | | 220,152 | 66,664 |
| Kissimmee Middle School | | | 71,809 | |
| KOA Elementary | | 139,245 | 121,443 | |
| Mill Creek Elementary | | | 155,704 | 158,838 |
| Narcoossee Elementary School | | | 237,993 | 27,668 |
| Narcoossee Middle School | | | | |
| Neptune Elementary School | | | 16,107 | |
| Neptune Middle School | | | | |
| Parkway Middle School | 149,780 | 139,035 | | |
| Pleasant Hill Elementary School | | | | |
| Poinciana Academy of Fine Arts | 33,125 | | | |
| Poinciana High School | | | 104,574 | |
| Reedy Creek Elementary School | | | | |
| Ross E. Jeffries Campus | 53,648 | | | |
| St Cloud Elementary | | 142 | 291,195 | |
| Sunrise Elementary School | | 265,345 | 43,314 | |
| Westside K-8 | | 1,493 | | |
| Zenith | 20,758 | | 31,075 | |
| Chiller Replacements/BAS: | | | | |
| Boggy Creek Elementary School | | | 138,423 | |
| Celebration K-8 School | | | | |
| Celebration High School | | 1,068,923 | 232,029 | |
| Central Elementary School | | 19,249 | 547,169 | |
| Cypress Elementary School | | 214,067 | 391 | |
| Discovery Intermediate School | | 223,357 | | |
| Flora Ridge Elementary School | | 235,421 | 290,548 | |
| Horizon Middle School | | 205,514 | | |
| Kissimmee Elementary School | 188,032 | 251,506 | | |
| Kissimmee Middle School | 66,254 | | | |
| Liberty High School | 84,497 | 187,192 | | |
| Narcoossee Middle School | | | 264,718 | |

**SDOC Business Advisory Board
School Capital Outlay Surtax Expenditures (1/2 Cent)
For the period ending 10/31/2021**

| Type of Expenditure | Fiscal Year | | | |
|-------------------------------------|-------------|-----------|-----------|-----------|
| | 2018-2019 | 2019-2020 | 2020-2021 | 2021-2022 |
| Partin Settlement Elementary School | | | 492,135 | |
| Poinciana Academy of Fine Arts | 302,758 | 254,165 | | |
| Poinciana High School | 4,695 | 2,644,442 | 206,953 | |
| St. Cloud High School | | | 355,666 | |
| Fencing/Gates: | | | | |
| Adult Learning Center | | | 6,285 | |
| Boggy Creek Elementary School | 2,221 | | | |
| Celebration High School | 833 | | | |
| Celebration K-8 School | 27,030 | | | |
| Central Elementary School | 8,952 | 557 | | 6,970 |
| Cypress Elementary School | | 5,354 | | |
| Deerwood Elementary School | | 25,314 | | |
| Discovery Intermediate School | | | 12,271 | |
| East Lake Elementary School | | 41,773 | | |
| Flora Ridge Elementary School | | 29,083 | | 15,742 |
| Gateway High School | 12,815 | | | |
| Harmony Community School | 33,086 | | | |
| Harmony High School | 12,083 | 23,152 | | |
| Hickory Tree Elementary School | 24,664 | | | |
| Highlands Elementary | 57,099 | 16,449 | 7,735 | |
| Horizon Middle School | 16,820 | | | |
| Kissimmee Elementary School | | | 24,628 | |
| Kissimmee Middle School | | | 6,911 | |
| Lakeview Elementary School | 53 | 42,148 | 12,883 | |
| Liberty High School | 16,194 | | 16,333 | |
| Michigan Avenue Elementary School | | | 2,185 | |
| Mill Creek Elementary | | 23,026 | 8,350 | 1,965 |
| Narcoossee Middle School | 2,160 | | | |
| Neptune Elementary School | | | 10,504 | 4,103 |
| Neptune Middle School | | | | |
| Parkway Middle School | | | 4,785 | |
| PATHS | | 45,404 | | |
| Pleasant Hill Elementary School | | 2,251 | | |
| Poinciana Elementary School | | 27,326 | 16,746 | |
| Poinciana High School | 15,558 | | | |
| Reedy Creek Elementary School | 25,703 | 4,003 | 1,947 | |
| Ross E. Jeffries Campus | 42,173 | 375 | | |
| St. Cloud High School | 107 | | | |
| St. Cloud Middle School | | | 1,101 | |
| Sunrise Elementary School | | | | |
| Tohopekaliga High School | | 16,544 | | |
| Westside K-8 | 36,355 | 913 | 4,806 | |
| Zenith | 4,787 | | | |
| Fire Alarms: | | | | |
| Poinciana Academy of Fine Arts | | | | |
| HVAC Repairs/Replacements: | | | | |
| Admin | | | 68 | 5,399 |
| Celebration High School | 56,322 | | | |
| Celebration K-8 School | 162,939 | 4,924 | | |
| Cypress Elementary School | | 7,894 | | |
| Deerwood Elementary School | | 7,758 | | |
| Discovery Intermediate School | | | | |

**SDOC Business Advisory Board
School Capital Outlay Surtax Expenditures (1/2 Cent)
For the period ending 10/31/2021**

| Type of Expenditure | Fiscal Year | | | |
|--|-------------|-----------|-----------|-----------|
| | 2018-2019 | 2019-2020 | 2020-2021 | 2021-2022 |
| Harmony High School | 3,162 | 4,478 | | |
| Horizon Middle School | | 152,730 | 1,891,622 | 538,867 |
| Kissimmee Elementary School | 20,586 | | | |
| Kissimmee Middle School | 66,487 | 152,541 | 1,906,674 | 515,579 |
| Lakeview Elementary School | | | | 9,640 |
| Liberty High School | 117,555 | 35,347 | 3,006 | |
| Narcoossee Middle School | 100,827 | | | |
| Neptune Middle School | 3,002 | | 11,798 | 38,998 |
| oTECH | 60,133 | | 35,865 | |
| Partin Settlement Elementary School | | | | 91,200 |
| Ross E. Jeffries Campus | 1,371 | 23,822 | | |
| Ventura Elementary School | | | 38,971 | |
| Painting and/or other projects (lighting, fans, windows) | | | | |
| ALCO | 7,616 | 10,915 | | |
| Celebration High School | 18,685 | 184,120 | | |
| Celebration K-8 School | 21,296 | 47,509 | 38,093 | 64,347 |
| Central Elementary School | | | 24,483 | 2,018 |
| Chestnut Elementary School | | | | 58,448 |
| Cypress Elementary School | | 41,882 | 89,846 | 27,147 |
| Deerwood Elementary School | 52,714 | 47,301 | 12,471 | 17,835 |
| Discovery Intermediate School | 114,620 | | | |
| East Lake Elementary School | | 40,144 | 9 | |
| Gateway High School | 757 | | | |
| Harmony Community School | | | | 72,400 |
| Harmony High School | 17,710 | | | |
| Hickory Tree Elementary School | 21,668 | | | |
| Highlands Elementary | | | | 58,000 |
| Horizon Middle School | 18,138 | 41,517 | 15,693 | 43 |
| Kissimme Elementary School | | 72,387 | | 4,758 |
| Kissimmee Middle School | 217,910 | | 64,550 | 6,807 |
| KOA Elementary | | 35,446 | 31,806 | |
| Lakeview Elementary School | | | | |
| Liberty High School | 18,685 | | | 30,021 |
| Mill Creek Elementary | | 43,198 | 53,907 | |
| Narcoossee Elementary School | | | | 59,150 |
| Narcoossee Middle School | 21,828 | 64,586 | | |
| Neptune Elementary School | | | | |
| Neptune Middle School | | | | |
| New Beginnings | | | | 52,000 |
| Osceola High School | 18,685 | | 9,000 | |
| Osceola County School for the Arts | 89,688 | | | |
| oTECH | | 19,898 | | |
| Parkway Middle School | | 44,462 | | |
| Partin Settlement Elementary School | | | | |
| Pleasant Hill Elementary School | | | 7,951 | |
| Poinciana Academy of Fine Arts | | | | |
| Poinciana High School | 13,333 | 247,884 | 1,487,487 | 24,867 |
| Reedy Creek Elementary School | 32,012 | | | |
| Ross E. Jeffries Campus | | | | |
| St. Cloud Elementary School | | 67,113 | | 3,661 |
| St. Cloud High School | | | 162,424 | |
| Sunrise Elementary School | | 225 | 61,352 | |
| Ventura Elementary School | | 60,702 | | |
| Westside K-8 | 86,808 | | | |
| Parking Lot/ Bus Loop/ Concrete /Drainage/ Field-Track | | | | |
| ALCO | | | 6,470 | |
| Boggy Creek Elementary School | | | | |
| Celebration High School | | | 7,899 | |

**SDOC Business Advisory Board
School Capital Outlay Surtax Expenditures (1/2 Cent)
For the period ending 10/31/2021**

| Type of Expenditure | Fiscal Year | | | |
|---|----------------------|----------------------|----------------------|-------------------|
| | 2018-2019 | 2019-2020 | 2020-2021 | 2021-2022 |
| Central Elementary School | | 8,429 | 6,707 | |
| Chestnut Elementary | | | | |
| Countywide | | 7,929 | | |
| Deerwood Elementary School | | 19,712 | | |
| Discovery Intermediate School | | | | |
| Harmony Community School | | 4,790 | | |
| Hickory Tree Elementary School | | 4,325 | | |
| Horizon Middle School | | 5,540 | | |
| Lakeview Elementary School | | 7,180 | 105,680 | |
| Liberty High School | | 14,871 | 387,554 | |
| Narcoossee Elementary School | | 7,035 | 8,575 | |
| Narcoossee Middle School | | 433 | 10,919 | |
| Neptune Elementary School | | | 7,357 | |
| Osceola High School | | 15,615 | | |
| oTECH | | 1,850 | 10,579 | |
| Parkway Middle School | | | 7,914 | |
| Poinciana Elementary | 19,655 | | | |
| Reedy Creek Elementary School | | | 7,055 | |
| St Cloud Elementary | | | | |
| Thacker Avenue Elementary | 6,648 | | | |
| Transportation | | | | |
| Westside K-8 | | 9,603 | | |
| Renovations/Playgrounds/Other | | | | |
| Central Elementary School | | | 47,425 | |
| Deerwood Elementary School | | | 59,000 | 39,704 |
| Gateway High School | | | | |
| Horizon Middle School | | 8,023 | 7,380 | |
| Lakeview Elementary School | | | | 3,970 |
| Poinciana High School | | | 72,754 | |
| Reedy Creek Elementary School | | | 25,600 | |
| St Cloud Elementary | | | 23,373 | |
| Thacker Avenue Elementary | | | | 39,715 |
| Roofing/Gutters/Covered walkways: | | | | |
| Boggy Creek Elementary School | | | 4,709 | |
| Celebration K-8 School | | | | |
| Chestnut Elementary | 107,400 | | | |
| Countywide | | | 21,575 | |
| Cypress Elementary School | | | 4,918 | |
| Deerwood Elementary School | | | | |
| Discovery Intermediate School | | 9,082 | 93,272 | |
| Gateway High School | | | | |
| Hickory Tree Elementary School | | | | |
| Kissimmee Elementary School | 500 | 3,300 | | |
| Narcoossee Middle School | | 11,420 | 108,896 | |
| Neptune Middle School | 191,628 | 131,449 | | |
| Partin Settlement Elementary School | 117,000 | | | |
| Poinciana Elementary School | 13,075 | 243,010 | | |
| Sunrise Elementary School | 109,800 | | | |
| St Cloud Elementary | | 59,597 | | |
| Safety & Security Equipment & software | 701,003 | 519,017 | 1,140,922 | 176,602 |
| Security Modifications and improvements | 28,153 | 89,099 | 1,135,416 | 109,831 |
| Technology Infrastructure and equipment | 1,522,770 | 1,263,694 | 911,184 | 170 |
| Subtotal Other | \$ 5,518,077 | \$ 10,619,263 | \$ 14,517,814 | 2,611,323 |
| TOTAL | \$ 57,370,940 | \$ 54,352,496 | \$ 35,889,385 | 16,912,675 |

**SDOC Business Advisory Board
Infrastructure Sales Surtax Expenditures (1/4 Cent)
For the period ending 10/31/2021**

| Type of Expenditure | Fiscal Year | | | |
|-------------------------|---------------------|----------------------|----------------------|-------------------|
| | 2018-2019 | 2019-2020 | 2020-2021 | 2021-2022 |
| Debt Service | \$ 6,551,233 | \$ 6,561,298 | \$ 6,568,081 | \$ 1,000 |
| Other: | | | | |
| Athletic Facilities | \$ 889 | \$ 4,060 | \$ - | \$ - |
| Buildings | | | | |
| Buses | 219,747 | | | |
| Chiller Replacements | | | | |
| Remodeling | 859,574 | 2,463 | | |
| Renovations-Canoe Creek | | 5,464,569 | 6,922,315 | 523,653 |
| Student Computers | 249,600 | 118,972 | | |
| Site improvements | 12,324 | | | 99,840 |
| Technology | 160,573 | 7,001 | | |
| White Fleet | 551,097 | 879,502 | 83,748 | 166,390 |
| Subtotal Other: | \$ 2,053,804 | \$ 6,476,567 | \$ 7,006,063 | \$ 789,883 |
| TOTAL | \$ 8,605,037 | \$ 13,037,865 | \$ 13,574,144 | \$ 790,883 |

Facilities Update

Business Advisory Board
December 8, 2021



Every Child, Every Chance, Every Day!



Facilities Update

- Project Updates

| | |
|----------------------------|----------------------|
| • Projects in Pre-Planning | \$42,797,875 |
| • Projects in Planning | \$97,041,248 |
| • Projects in Design | \$170,661,695 |
| • Projects in Construction | <u>\$40,914,818</u> |
| • Current Program | \$351,415,636 |

Projects in Pre-Planning

| <u>Project</u> | <u>Budget</u> | <u>Proposed Opening</u> |
|------------------------|---------------------|-------------------------|
| Kindred K8 School "AA" | \$42,797,875 | 2024-2025 |
| TOTAL | \$42,797,875 | |

Projects in Planning

| <u>Project</u> | <u>Budget</u> | <u>Proposed Opening</u> |
|---------------------------------------|---------------------|-------------------------|
| Healthy Way and OCSA Bus Road | \$4,000,000 | TBD |
| Transportation West | \$22,100,000 | TBD |
| K8 School “BB” (Westside Relief) | \$42,000,000 | 2024-2025 |
| OCSA Comprehensive Renovation | \$2,000,000 | 2024-2025 |
| RCES Comprehensive Renovation | \$2,000,000 | 2025-2026 |
| DAS Emergency Radio Projects (6 each) | \$941,248 | TBD |
| Transportation East | \$24,000,000 | TBD |
| TOTAL | \$97,041,248 | |

Projects In Design

| <u>Project</u> | <u>Budget</u> | <u>Construction NTP</u> |
|------------------------------------|----------------------|-------------------------|
| Celebration Isle ES | \$27,123,870 | 5/1/2022 |
| GWHS Comprehensive | \$85,300,000 | 3/21/2022 |
| NPMS Rear Bus Loop | \$645,000 | TBD – On Hold |
| NPES Additional Car Queuing | \$1,136,698 | 5/16/2022 |
| Admin 2000 Roof Replacement | \$1,261,132 | TBD |
| CLHS Track Resurfacing | \$450,939 | 9/08/2021 |
| PNHS Network Cabling Replacement | \$1,000,000 | 10/21/2021 |
| PNHS Tennis Court Repairs | \$337,363 | TBD |
| Sunbridge K8 School “CC” | \$43,500,000 | 2024-2025 |
| CAES Kitchen Renovation | \$1,900,000 | Postponed |
| HRHS Kitchen Renovation | \$1,900,000 | Postponed |
| PSES Kitchen Renovation | \$1,900,000 | Postponed |
| KMES Kitchen Renovation | \$1,900,000 | 3/14/2022 |
| WK8S Kitchen Renovation | \$1,900,000 | 3/14/2022 |
| HRHS Space Reconfiguration | \$40,235 | TBD |
| CCK8 Additional Pedestrian Walkway | \$66,199 | 11/22/2021 |
| BELA School Parking Lot | \$300,259 | TBD |
| TOTAL | \$170,661,695 | |

Projects in Construction

| <u>Project</u> | <u>Budget</u> | <u>Substantial Completion</u> |
|---------------------------------------|---------------------|-------------------------------|
| Admin 2000 Records Fire Suppression | \$439,870 | 2/25/2022 |
| PNHS Tennis Court Repairs | \$337,363 | 3/25/2022 |
| Canoe Creek K8 Year 2 | \$30,021,000 | 12/04/2021 |
| oTECH Welding Program | \$3,500,000 | TBD |
| DAS Emergency Radio Installations (4) | \$536,942 | Various |
| Secure Lobby Projects (17) | \$2,458,835 | Various |
| Cyclical Capital Projects (2) | \$113,432 | Various |
| Cafeteria Refresh Projects (18) | \$2,150,000 | Various |
| HRHS Vet Program | \$164,000 | 10/29/2021 |
| CK8S Cafeteria Seating Expansion | \$109,139 | 11/15/2021 |
| PROD & SNS Roof Replacement | \$524,237 | 2/24/2022 |
| CLHS Track Resurfacing | \$450,939 | 1/31/2022 |
| PNHS Outdoor Basketball Court Repair | \$109,051 | 12/17/2021 |
| TOTAL | \$40,914,818 | |

HRHS

Vet Program (X-Ray Room)

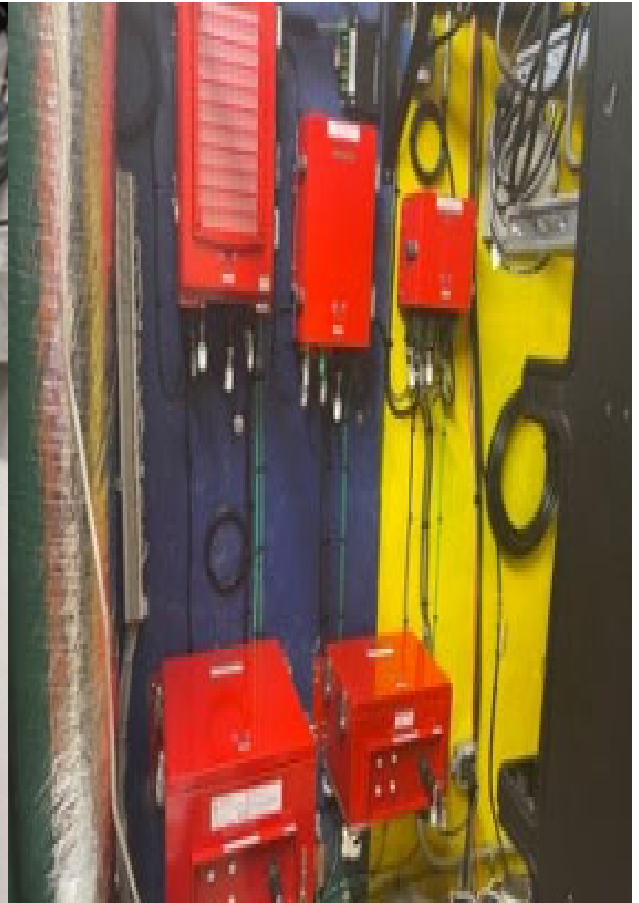


DAS Radio Installations

CLHS

NCMS

HRCS



Secure Lobbies

CYES



HRHS



Professional Development & SNS

Roofing



Every Child, Every Chance, Every Day!



Comments and Discussion