



Course registration for your 10th grade year

Mr. Blackmon

Ms. Vazquez



What is the
right path for
me?

Mr. Blackmon


Ms. Vazquez



Yes, that is right!

**Can you believe it is time to start
thinking about your Sophomore year!**





you
GOT
this

There are a couple different paths to choose from...

AP[®]



Dual Enrollment

- Courses are weighted at a 5.0 scale
- Not standardized
- **All class credits may not be accepted towards your major**
- Some colleges may require completion of Associates degree before transferring
- **Your College Transcript begins, any poor grades will stay with your college transcript FOREVER**
- You still take classes at CHS in most situations
- Must have a 3.0 unweighted GPA
- Must complete application
- **Parents must accompany their child to class if under 17 years old.**
- Must take and pass all 3 sections of the PERT
- **Is not considered a program**
- **Florida graduation requirements NOT waived**
- Does not automatically earn the BRIGHT FUTURES scholarship.






Advanced Placement

AP[®]



Advanced Placement

- College credit earn by exam scores
- Standardized
- Nationally recognized
- Colleges determine how many credit they will award based on exam score
- Courses available at CHS or FLVS
- **Is not considered a program**
- **Florida graduation requirements NOT waived**
- Does not automatically earn the BRIGHT FUTURES scholarship





**All Florida Students can earn
100% of the Florida Bright
Future Scholarship by.....**



Florida Bright Futures Scholarship Program Florida Academic Scholars (FAS) / Florida Medallion Scholars (FMS) 2022-23

Initial Eligibility Requirements: (As determined by the Florida Department of Education)

1. Submit the [Florida Financial Aid Application \(FFAA\)](#) no later than August 31 after high school graduation.
2. Graduated from a Florida high school with a standard high school diploma or its equivalent.
3. Complete the 16 college-preparatory courses required for admission to a state university.
4. Achieve the required weighted GPA in the 16 college-preparatory courses per the chart below.
5. Achieve the required composite ACT[®] or combined SAT[®] score no later than June 30 of the student's graduation year (or through January 31 for mid-year graduates), per the chart below.
6. Complete the required number of volunteer service **or** paid work hours per the chart below.

Type	16 High School College-Preparatory Course Credits ¹	High School Weighted Bright Futures GPA	College Entrance Exams by High School Graduation Year (ACT [®] /SAT [®])	Volunteer Service Hours ²	Paid Work Hours ²
FAS	4 - English (three must include substantial writing) 4 - Mathematics (at or above the Algebra I level) 3 - Natural Science (two must have substantial laboratory)	3.50	2022-23 Graduates: 29/1330 2023-24 Graduates: 29/1340	100 hours	100 hours
FMS	3 - Social Science 2 - World Language (sequential, in same language)	3.00	2022-23 Graduates: 25/1210 2023-24 Graduates: 25/1210	75 hours	100 hours

¹ The required coursework aligns with the State University System admission requirements found in Florida Board of Governor's Regulation 6.002. Additional information regarding high school coursework can be found within the [Florida Counseling for Future Education Handbook](#).

² Students must earn either the required volunteer service **OR** paid work hours, but not a combination of both.



**IB Diploma (DP) Students who earn
their IB DP Diploma...**

**Automatically earn Full Bright
Futures with 100 hours of service.**

**They DO NOT have to meet the
ACT/SAT score or the GPA**

**Dual Enrollment and AP students do
not!**

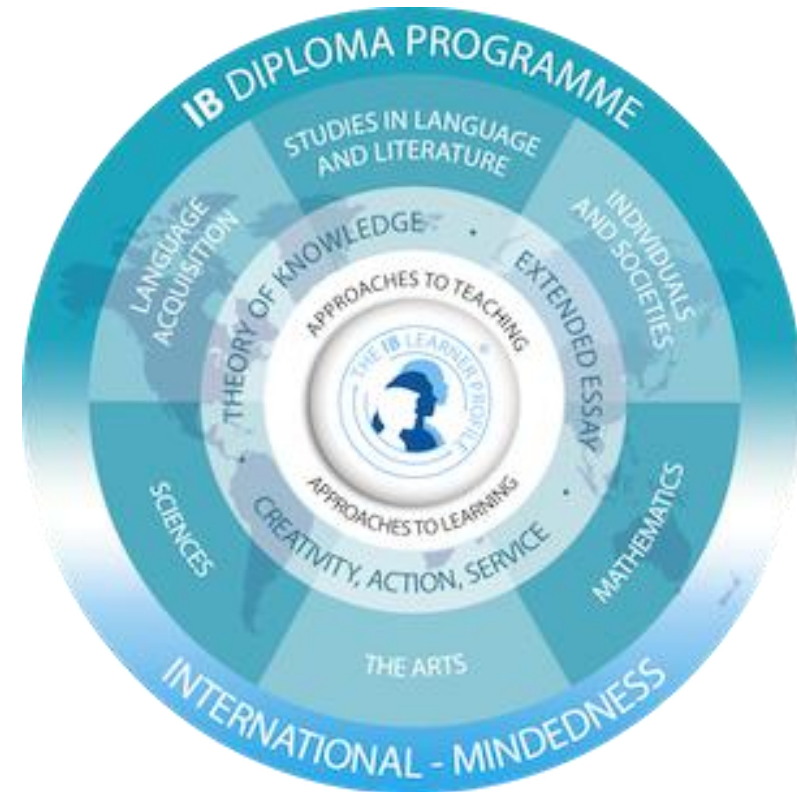




**International
Baccalaureate®**

Why IB?

- College credit earn by exam scores
- Standardized
- College credit earned by exam and internal assessments completed with teacher
- Standardized
- Internationally recognized
- Considered the most rigorous program of the 3 because it.....**Is the only one considered a program**
- **Florida graduation requirements NOT waived**
- Does not automatically earn the BRIGHT FUTURES scholarship



IB HAS THE HIGHEST COLLEGE
ADMISSIONS RATE....

WHY?



IT IS THE ONLY ONE OF THE 3 OPTIONS
THAT IS A PROGRAM.

COLLEGES LOVE “PROGRAM
COMPLETERS”



University	Location	Total Population Acceptance Rate	IB Students Acceptance Rate	IB Students vs Total Population
University of Florida	Florida	42%	82%	+40%
Florida State University	Florida	60%	92%	+32%
University of Miami	Florida	30%	72%	+42%
MIT	Massachusetts	7%	23%	+16%
Stanford University	California	5%	17%	+12%
Harvard University	Massachusetts	5%	12%	+7%
University of Chicago	Illinois	8%	60%	+52%
Princeton University	New Jersey	7%	17%	+10%
Cornell University	New York	14%	47%	+33%
Yale University	Connecticut	6%	14%	+8%
Duke University	North Carolina	9%	36%	+27%
New York University	New York	33%	47%	+14%

Ivy League Universities: Average of 18% higher acceptance rate than total population

Top Universities: Average of 22% higher acceptance rate than total population

PLEASE REMEMBER ...

IB IS FOR ALL UNIVERSITIES, NOT JUST THE
ELITE ONES

IB Components

Students take 6 subjects align with general education classes

On average IB students earn 15-25 credits...which tends to be more than the other options

Courses are weighted 5.0

Foreign Language required

Extended Essay, Theory of Knowledge, & Creativity Activity Service



Is a Program – Holistic

Is not a Program – Collection of classes

Standardized

Scores are based on the quality of work evaluated against a set criteria or standard

Internationally Recognized

Nationally Recognized

Comprehensive Curriculum

Courses are subject specific

Students take 6-7 weighted courses

Students take 3-4 weighted courses



Courses weighted on a 5.0 scale

Foreign Language Required

Foreign Language Not Required

Automatically qualify for top Bright Futures Scholarship with IB Diploma

Must meet all Bright Futures Requirements
(3.5 Core GPA, 1340 SAT, Community Service)

Certain Florida Graduation requirements are waived

All Florida Graduation requirements must be met



Recognized by most US universities for college credit consideration

Use external assessments and evaluators to score assessments

College Credit based on internal assessments completed with teacher and IB exam score
(3-4 components)

College Credit awarded based on AP exam score
(1 component)

Graduate with Collaborative, Communication, Research, Writing and Presentation Skills

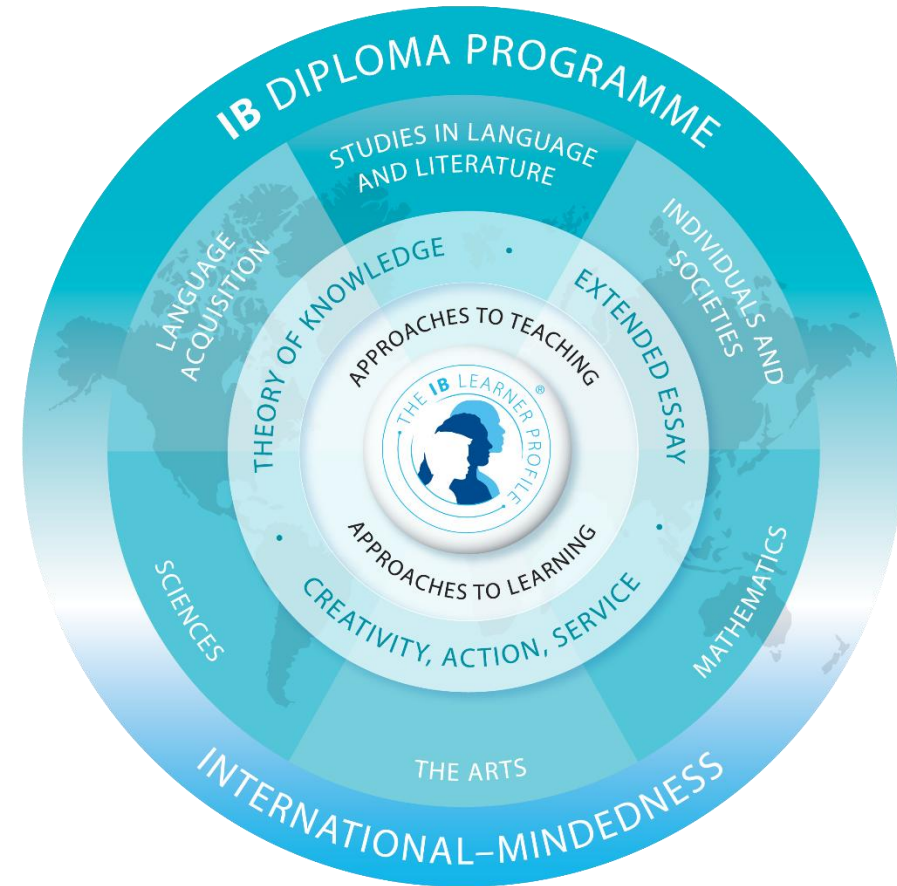
College recognition as most rigorous of the 3 programs

Career Programme



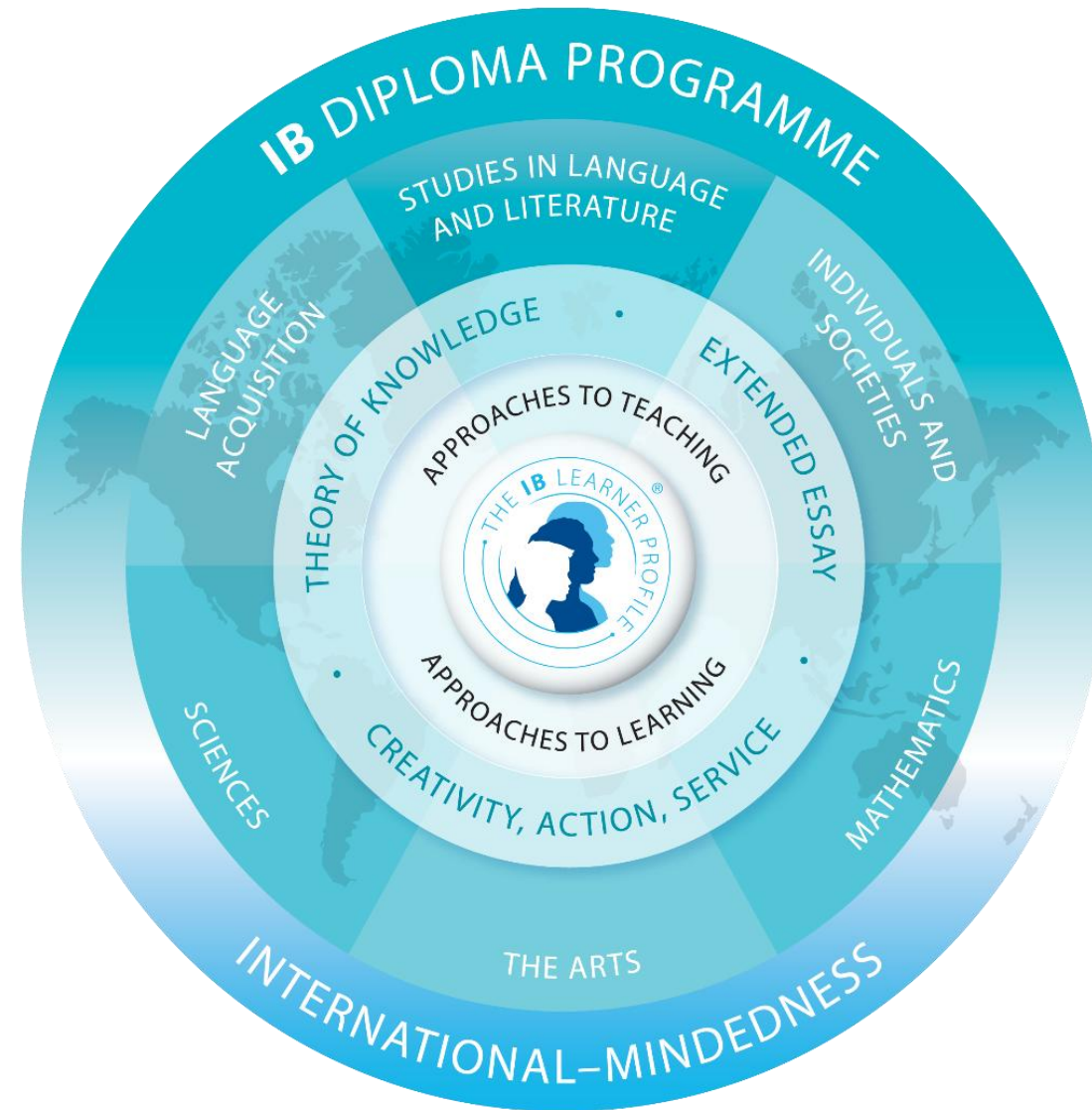
Complete your Career Pathway
and pass 2-3 IB courses
during 11-12th

Diploma Programme



Complete one course in groups
1-6 during 11-12th

Diploma Programme



Diploma Programme

This is the programme Celebration High School has offered for the last 11 years.



Diploma Requirements

Reminder of IB Diploma Requirements (11th and 12th grade)

- All IB DP students take 1 course in each of the 6 IB subject groups
- Each course you can earn a 1-7 score
- The Groups are:
 - Group 01: Language A: English Literature
 - Group 02: Language B: Language Acquisition
 - Group 03: Individual and Societies
 - Group 04: The Sciences
 - Group 05: Mathematics
 - Group 06: The Arts or Elective



Diploma Requirements

Of the 6 IB courses you take.....

Students **must** take

- 3 Higher Level Courses
- 3 Standard Level Courses



Students **can** take

- 4 Higher Level Courses
- 2 Standard Level Courses

Standard Level

150 Hours

Exams Taken in Junior
or Senior Year

Higher Level

240 Hours

Exams Taken in Senior
Year

Diploma Requirements

- You can only take 2 IB exams junior year that will count towards your IB Diploma.
- IB Diploma students must complete the following Core Components over Junior and Senior years:
 - Extended Essay
 - CAS – Creativity, Activity, and Service
 - Theory of Knowledge (*Senior required Class*)

Diploma Requirements

Higher Level Courses

- English Lang & Lit (required)
- Spanish
- French
- Geography
- Philosophy
- Biology
- Chemistry
- Enviro Systems & Societies
- Math A&A
- Dance
- Visual Arts

Standard Level Courses

- Spanish
- French
- Global Politics
- Geography
- Philosophy
- Psychology
- Biology
- Chemistry
- Environmental Systems & Societies
- Math A&A
- Math A&I
- Music

Diploma Requirements

Any additional IB courses you take over these six IB courses will not count towards the IB diploma, and they are considered a general elective class like when taking AP courses or other non-IB courses.

Diploma Requirements

IB DP Students are working to earn 2 Diplomas

1. The state of Florida High School Diploma
2. The IB DP Diploma

Diploma Requirements

To Earn your Florida High School Diploma Graduation Requirements

Complete the IB Curriculum

- Submit all IA's (internal assessments)
- Sit for all IB Exams
- Complete CAS (Creativity, Activity, Service)
- Complete your EE (extended essay)
- Complete TOK (Theory of Knowledge)



Diploma Requirements

To Earn your IB DP diploma

- Complete the IB Curriculum
 - Submit all IA's (internal assessments)
 - Sit for all IB Exams
 - Complete CAS (Creativity, Activity, Service)

(continued)



Diploma Requirements

To Earn your IB diploma (cont.)

- Earn 24 points out of a possible 45
 - Each of the 6 classes are worth 1-7 points
 - TOK/EE Matrix is worth 1-3 points
- Pass your EE
- Pass TOK
- Compete CAS



Career-related Programme



Career-related Programme

- New programme we are adding next year
- For 11th and 12th graders like the Diploma Programme
- Focused on a Career related study...at CHS
 - PLTW Biomedical Sciences
 - Digital Media

Career-related Requirements

Students **must** take their Career pathway in 11th and 12th grade and take an industry certification exam

Students **must pass**

- 2 IB Courses – can, and should take more



Standard Level

150 Hours

Exams Taken in Junior
or Senior Year

Higher Level

240 Hours

Exams Taken in Senior
Year

Career-related Requirements

Reminder of IB Career Requirements

- Complete 2 years of career pathway and sit for the industry certification
 - Pass minimum 2 IB courses, 3 to 4 are recommended
 - Complete the Reflective Project Essay, Service Learning, Language Development and the PPS course.
 - Student **MUST** meet state of Florida Graduation requirements
- DOES NOT** earn automatic Bright Future Scholarship



Career-related Requirements

- Students should choose IB Courses related to their career pathway
- One of the 2 courses must extended over two year
- *CP Students should plan on taking one IB exam junior year*



Career-related Requirements

If you are interested in the IB CP, we will be hosting information meetings soon.

However, you would still be in your Pre-IB classes next year and your Career pathway class next year.



We do need to discuss Math

Universities want all high school students to take the most rigorous math possible that they can be successful at...

How is "successful" defined....A's and B's

Math Curriculum

Students coming out of Algebra 2 Honors will choose between 3 IB Math options...

IB Math Pathways:

- IB Math courses require Algebra II Honors as a prerequisite.
- After Algebra II Honors, students choose between two IB math course pathways:
 - Math Applications and Interpretation - offered at the SL (2 year) level.
 - Math Analysis and Approaches - offered at both the SL (2 year) and HL (3 year) levels.

	9th Grade	10 th Grade		11 th Grade	12 th Grade
Group 5: Mathematics*	<i>Geometry Honors if Algebra 1 credit obtained</i>	Algebra 2 Honors	SL	IB Applications and Interpretations 1 SL	IB Applications and Interpretations 2 SL
				IB Analysis and Approaches 1 SL	IB Analysis and Approaches 2 SL
	<i>Algebra 2 Honors Algebra 1 and Geometry credit obtained</i>	Analysis and Approaches 1 SL	SL	IB Analysis and Approaches 2 SL	<i>AP Math Elective</i>
				IB Analysis and Approaches 1 HL	AP Calculus
				Analysis and Approaches 1 SL	IB Applications and Interpretations 2 SL

Math Curriculum

Mathematics Applications and Interpretations: This course is designed for students who enjoy describing the real world and solving practical problems using mathematics, those who are interested in harnessing the power of technology alongside exploring mathematical models and enjoy the more practical side of mathematics.

Emphasis on modelling and statistics

Develops strong skills in applying mathematics to the real-world

Real mathematical problem-solving using technology

For students interested in social sciences, natural sciences, statistics, medical, business, psychology and design

Math Curriculum

Mathematics Analysis and Approaches: This course is intended for students who wish to pursue studies in mathematics at university or subjects that have a large mathematical content; it is for students who enjoy developing mathematical arguments, problem solving and exploring real and abstract applications, with and without technology.

Emphasis on algebraic methods

Develop strong skills in mathematical thinking

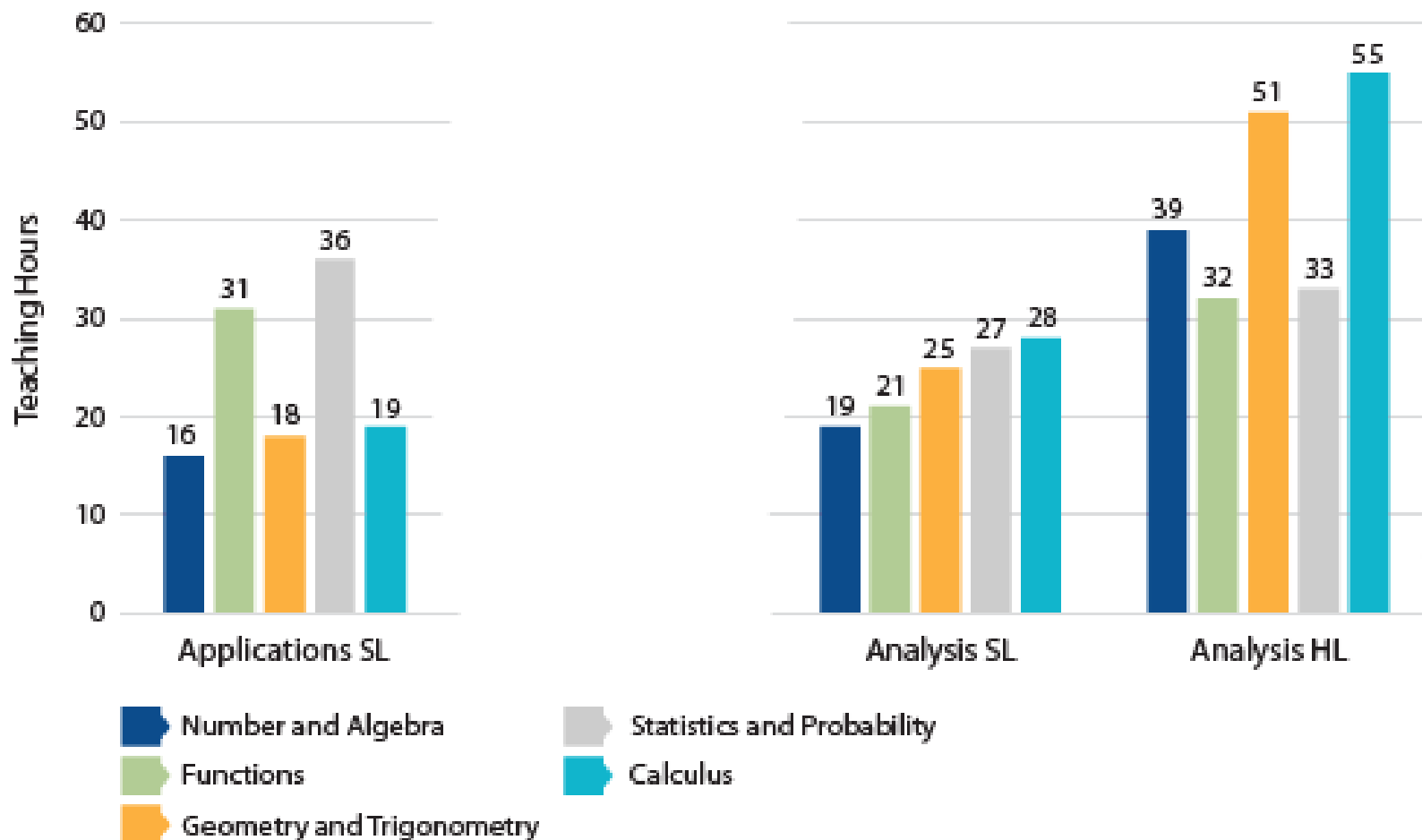
Real and abstract mathematical problem solving

For students interested in mathematics, medicine, engineering, physics, physical sciences, some business and economics

Math Curriculum

Mathematics Subject Breakdown

All courses cover the same 5 topics within mathematics but with varying emphasis



IB Registration



- Will take place over the next week with Ms. Vazquez
- You are received your your “IB” registration form (Pick Sheet) today
- You will complete your registration form at home
- We want you to be the driven force of the decisions AND get input with your parents
- You are required to get your parent’s signature

IB Registration

Pick Sheet – Pre-IB Courses

Make your choices and write down any questions you have for Ms. Vazquez
Use the “CHS **Pre-IB** Curriculum Guide to learn out more about the choices

Student Signature/Date: _____

/

Parent Signature/Date: _____

/

*You **must** select a course from each of your Pre-IB groups.*

Group 1: Language A

- English II Pre-IB

Group 2: Language B

- French II Pre-IB
- Spanish II Pre-IB

Group 3: Individuals & Societies

- AP World History

Group 4 – Experimental Sciences

- Chemistry I Pre-IB
- Physics Honors
- AP Physics 1
- Anatomy Honors
- AP Biology/Genetics (Double Block)
- AP Chemistry/Chem 2 (Double Block)
- AP Environmental

Group 5 – Mathematics

- Algebra II Honors
- AP pre-calculus (completed Alg2)



IB Registration

Pick Sheet – you get two electives your sophomore year.

Identify and prioritize your Top 4 choices by numbering them 1-4

Use the “CHS Curriculum Guide to learn out more about the choices

Mark your choices 1 through 8 (1 being your 1st choice)
All students must enroll in at least 1 College or Career Pathway

Legend:
CT = CTE Course PA = Practical Art PF = Performing/Fine Art * = Application Required + = Prerequisite \$ = Cost Involved TA = Teacher Approval/Audition

Electives

AVID (*)	Music (PF)	Physical Education	Visual Arts (PF)
AVID 2 (+)	AP Music Theory (+)	Personal Fitness (Grad Req)	2-D Studio Art 1 (\$)
Dance (PF)	Band 1 (\$)	Basketball 1 & 2	2-D Studio Art 2 (+\$)
Dance Techniques 1	Band 3 (+\$)	Soccer/Track & Field	3-D Studio Art 1 (\$)
Dance Techniques 2 (+)	Band 4 (+\$)	Team Sports 1 & 2	3-D Studio Art 2 (+\$)
Drama/Theatre (PF)	Chorus 1 (\$)	Volleyball 1 & 2	
Theatre 1	Chorus 3 (+\$)	Weight Training 1 & 2	
Theatre 2 (+)	Chorus 4 (+\$)		
Musical Theatre (+)	Jazz Ensemble 1 (+\$)	Social Studies	World Languages
Acting 1 (+)	Jazz Ensemble 2 (+\$)	AP European History	French 1
Information Technology	Keyboard (Piano) 1	AP Human Geography	French 2 (+)
Digital Information Tech (PA)	Keyboard (Piano) 2 (+)	Psychology 1/Psychology 2	Spanish 1
AP Computer Science (+)	Music of the World		Spanish 2 (+)
Journalism	Orchestra 1		Spanish 3 Honors (+)
Journalism 1	Orchestra 2 (+)		AP Spanish Language (+)
Journalism 2 (+)			
Leadership			
Latinos in Action 1 (+)			

College & Career Pathways

Air Force JROTC	Digital Media (CI)	Hospitality & Tourism Management (CI)
Air Force JROTC 1	Digital Media/Multi-Media 1 (Photoshop)	Introduction to Hospitality & Tourism
Air Force JROTC 2 (+) (PA)	Digital Media/Multi-Media 2 (Illustrator) (+)	Technology for Hospitality & Tourism (+)
Air Force JROTC 3 (+)	Digital Media/Multi-Media 3 (InDesign) (+)	Hospitality & Tourism Marketing Mgmt (+)
Air Force JROTC 4 (+)	Entrepreneurship (CI)	Hospitality & Tourism Internship (+)
Biomedical Sciences (*)	Principles of Entrepreneurship	Sport, Recreation, Entertainment Marketing (CI)
Principles of Biomedical Science (+)	Business Management & Law (+)	Sport/Recreation/Entertainment Essentials
Human Body Systems (+)	Business Ownership (+)	Sport/Recreation/Entertainment App (+)
Medical Interventions (+)		Sport/Recreation/Entertainment Mgmt (+)
Biomedical Innovations (+)		



Diploma Requirements

10th grade requirements and Guidelines - Keeping the IB DP/CP requirements for 11th and 12th grade in mind:

- All Pre-IB sophomores are required to take Pre-IB English II
- All Pre-IB sophomores are required to take AP World History (DP) and AP World History or honors (CP)
- All Pre-IB sophomores are required to take Pre-IB Chemistry.
 - Extremely strong students with high achievement in both math and science may take both Pre-IB Chemistry and Physics (honors or AP) as a sophomore. For AP Physics 1, students must be in, or completed IB Math A&A 1
- All Pre-IB sophomores will continue their Language Acquisition (French or Spanish) sequence
 - DP - Pre-IB
 - CP - choice of Pre-IB or standard



Diploma Requirements

10th grade requirements and Guidelines - Keeping the IB DP/CP requirements for 11th and 12th grade in mind:

- All Pre-IB sophomores will continue their Mathematics path. All IB Diploma students must have completed Algebra I Honors, Algebra II Honors and Geometry Honors by the end of their 10th grade year.
 - The appropriate math placement will be discussed with your current math teacher and Mr. Blackmon/Ms. Cechman during the individual meeting.
 - ***If you are interested in taking Math Analysis Higher Level, please talk to your Algebra 2 Honors teacher***
- Pre-IB sophomores will have up to 2 non-IB electives that they can take. There is a large selection to choose from, so please be sure to weigh your options for these elective selections.
 - Use the **CHS Curriculum Guide** to investigate your choices.

Forms You Will Use

Registration Information for Rising IB Students

- 10th Grade CHS Pre-IB Pick Sheet
- CHS IB Progression Chart
- CHS Math Progression Flyer
- CHS IB Curriculum Guide
- CHS Curriculum Guide
- IB Subject Briefs

You can find these files on the [CHS IB Webpage](#)



Forms You Will Use

https://www.osceolaschools.net/domain/2555

Home About Us Academics and Clubs Athletics Guidance Student Resources Staff Directory Choice International Baccalaureate (IB) DISTRICT HOME OUR SCHOOLS

Celebration Night
Every Child, Every Chance, Every Day!

Home > International Baccalaureate (IB) > Homepage

International Baccalaureate (IB)

- IB Diploma Programme
- Why IB?
- CHS IB Application Process
- IB Curriculum**
- IB Academic Policies

IB Coordinator
Donald Blackmon
Email: Donald.Blackmon@osceolaschools.net
Phone: 407-518-2924

IB Counselor
Kayla Vazquez
Email: kayla.vazquez2@osceolaschools.net
Phone: (321) 939-6627

IB DIPLOMA PROGRAMME
STUDIES IN LANGUAGE AND LITERATURE
LANGUAGE ACQUISITION
THEORY OF KNOWLEDGE
APPROACHES TO TEACHING
EXTENDED ESSAY
APPROACHES TO LEARNING
CREATIVITY, ACTIVITY, SERVICE
MATHEMATICS
THE ARTS
INTERNATIONAL-MINDEDNESS

Forms You Will Use

The screenshot shows a web browser displaying the Celebration High website. The URL in the address bar is <https://www.uscedeaschools.net/0001011/4240>. The page features a purple header with the school logo and the text "Celebration High Every Child, Every Chance, Every Day!". The navigation menu includes links for "About Us", "Academics and Clubs", "Athletics", "Guidance", "Student Resources", "Staff Directory", "Choice", and "International Baccalaureate (IB)". There are also buttons for "DISTRICT HOME" and "OUR SCHOOLS". The main content area is titled "IB Curriculum" and includes a "Guides" button. A list of links is provided: "CHS IB Course Progression", "CHS IB Math Progression", "CHS IB DP Curriculum Guide", and "CHS Pre-IB Curriculum Guide". Below these links, there is a link for "CHS Curriculum Guide 25-26" with a sub-link for "CHS Curriculum Guide 25-26". An "Edit Page" button is visible in the top right corner of the content area. The breadcrumb trail at the bottom of the page reads: Home > International Baccalaureate (IB) > IB Curriculum > Guides.

The End

Questions