

THE SCHOOL DISTRICT OF OSCEOLA COUNTY, FLORIDA

817 Bill Beck Boulevard • Kissimmee • Florida 34744-4492
Phone: 407-870-4600 • Fax: 407-870-4010 • www.osceolaschools.net

SCHOOL BOARD MEMBERS

District 1 – Teresa “Terry” Castillo – Chair
407-577-5022
District 2 – Julius Melendez
321-442-2862
District 3 – Jon Arguello
407-433-9082
District 4 – Heather Kahoun
689-241-7822
District 5 – Erika Booth – Vice Chair
407-870-4009



Superintendent of Schools
Dr. Debra P. Pace

Agenda

Business Advisory Board Meeting

Bill Collins Conference Room
817 Bill Beck Blvd
Kissimmee, FL 34744

Wednesday, December 14, 2022
7:30 A.M.

1. Approve Minutes of October 26, 2022
2. Review Impact Fee & Sales Tax Report
3. Budget Update
4. Facilities Update
5. Membership
6. Next regular meeting: January 25, 2023

BUSINESS ADVISORY BOARD MINUTES
OCTOBER 26, 2022

Members Present: Mel Welch, Olga Sanchez Fuentes, Shawn Hindle, Greg Filak, Clyde Wells, Turner Wallis

Others/Guests: Dr. Debra Pace, Sarah Graber, Marc Clinch, Angela Barner, Laura Walker, Luz Skerrett, Michelle Welch

Location: NeoCity Academy

Mr. Welch called the meeting to order.

- **NeoCity Academy**
Dr. Pace and Principal Meechin welcomed the Business Advisory Board Members and other guests to NeoCity Academy. Mr. Meechin provided a brief history of the school.
- **Minutes**
The minutes from the August 24, 2022, meeting was approved with all ayes.
- **Impact Fee and Sales Tax Reports**
Mrs. Angela Barner reviewed the Impact Fee & Sales Tax Reports for the period ending August 31, 2022.

Impact Fee Revenues

Collections approx. \$ 9M

Impact Fee Expenditures

Expenditures approx. \$ 1.1M

Infrastructure Sales Surtax Revenue

Collections approx. \$ 1.6M

Infrastructure Sales Surtax Expenditures (1/4 cent)

Expenditures approx. \$ 2.1M

School Capital Outlay Surtax Revenue

Collections approx. \$ 3.2M

School Capital Outlay Surtax Expenditures (1/2 cent)

Expenditures approx. \$ 2.3M

- **Budget Update**
Ms. Graber stated that the current annual budget was approved at the final budget hearing on September 6th. She provided a brief budget update and shared that her team is currently in the planning cycle for next year's budget.
- **Facilities Update & Planning Department**
Mr. Marc Clinch thanked the Board for their continued support. He presented a Facilities Update on Projects in Pre-Planning, Projects in Planning, and Projects in Design. Two of the Projects in Planning are the Comprehensive Renovations for OCSA and RCES.

Mr. Clinch presented a Construction and Facilities Update. Several pictures were presented on the progress of Elementary A – New Construction and Gateway High School Comprehensive Renovation. Marc stated that there are several Projects in the completion stage, including: NCS Water Bottle Filling Station, HRHS SRO New Door Entry, and Parkway Middle School's Performing Arts Doors. He mentioned several CCNA solicitations completed in the Summer of 2022.

There was a brief discussion on the proposed 1 cent Infrastructure Sales Surtax which is on the November ballot. Members voiced concerns in relation to the County's efforts in marketing for approval of the sales tax referendum.

BUSINESS ADVISORY BOARD MINUTES
OCTOBER 26, 2022

At the last meeting, the BAB members expressed interest in serving as an advisory function to the School Board in areas beyond the impact fee and sales tax programs. Mr. Welch thanked Mr. Filak for submitting his recommended updates to the Business Advisory Board by-laws to include other areas in which the BAB Members can be more involved to provide valuable insight and input on other items within the District Strategic Plan. Due to time constraints, Mr. Welch requested tabling this topic until the next BAB meeting.

BAB Meeting Dates

The Business Advisory Board has agreed to meet the 4th Wednesday of every month. The Board decided to cancel the November meeting due to the Thanksgiving holiday. The next meeting will be held on Wednesday, December 14, 2022, @ 7:30 a.m. in the Bill Collins Conference Room.

**SDOC Business Advisory Board
Impact Fee Revenue
For the period ending 10/31/2022**

MONTH	Fiscal Year									
	2018 - 2019		2019 - 2020		2020 - 2021		2021 - 2022		2022 - 2023	
	Revenue	Units*	Revenue	Units*	Revenue	Units*	Revenue	Units*	Revenue	Units*
July	\$ 2,385,492	267	\$ 10,863,004	1,123	\$ 6,324,659	675	\$ 7,867,108	1,084	\$ 5,415,807	528
August	4,726,773	488	5,697,497	628	6,155,126	586	14,050,633	1,461	9,012,245	854
September	7,804,166		7,885,645	797	5,030,351	541	7,078,583	638	4,151,520	413
October	7,679,304	713	6,923,523	731	7,071,236	887	14,931,045	1,357	5,484,693	546
November	9,018,833	952	5,858,840	584	4,633,389	492	5,234,658	498		
December	6,132,620	610	5,076,853	560	5,074,262	563	5,604,214	522		
January	4,893,678	483	4,668,053	547	3,681,511	398	7,663,602	749		
February	6,609,701	685	4,722,382	458	5,068,058	548	5,186,827	625		
March	6,213,597	610	7,787,661	837	9,076,345	858	14,706,633	1,385		
April	6,268,996	635	7,099,622	633	9,651,165	1,152	13,532,094	1,491		
May	6,613,496	706	3,627,116	378	11,320,247	1,065	9,256,530	636		
June**	6,062,604	621	4,177,704	481	10,042,573	958	5,840,977	544		
TOTAL	\$ 74,409,260	6,770	\$ 74,387,899	7,757	\$ 83,128,923	8,723	\$ 110,952,905	10,990	\$ 24,064,266	2,341

*Number of Units as computed based on reports received by the City of Kissimmee, City of St. Cloud, and Osceola County

**Accrual

Number of Units Detail				
Type of dwelling	Total Units	Osceola County	City of Kissimmee	City of St Cloud
Single Family	203	164	6	33
Single Family-S/T rental	1	1	0	0
Single Family-Credits	0	0	0	0
Townhomes	169	74	76	19
Townhomes-S/T rental	0	0	0	0
Condominiums	32	32	0	0
Multifamily	138	2	136	0
Mobile Homes	3	3	0	0
Total	546	276	218	52

Budget	
Forecasted Revenue	\$ 80,000,000

Fund Balance	
Actual Fund Balance	\$ 292,265,150
Budgeted Fund Balance	\$ 125,386,862

**SDOC Business Advisory Board
Impact Fee Expenditures
For the period ending 10/31/2022**

PROJECT NAME	Fiscal Year				
	2018 - 2019	2019 - 2020	2020 - 2021	2021 - 2022	2022 - 2023
Buses	1,850,948	822,176	113,116		1,419,214
Canoe Creek K-8		1,167,050	14,598,151	4,617,185	12,686
Celebration Island Village	709,005	40,856	23,725	1,811,046	2,365,134
Discovery Intermediate Space Reconfiguration					
Harmony Middle School - "Middle School AA"	26,882,586	2,607,661	52,692		
Harmony High School Space Reconfiguration				504,181	742,383
Kindred K-8	2,125				
Knightsbridge "BB"				9,419,755	387,997
Land-Nova Road a/k/a Newman property			8,150,000		
Narcoossee Middle School Space Reconfiguration					36,970
NeoCity Academy	13,936,386	2,578,168			7,600
Poinciana High School Wing Addition		6,023,094	1,656,129	2,100	
St Cloud High School Wing Addition				365	238,290
Sunbridge K8 "CC"				1,364,646	126,156
Tohopekaliga High School	8,587,940	113,141	9,350		
TOTAL	\$ 51,968,990	\$ 13,352,146	\$ 24,603,163	\$ 17,719,278	\$ 5,336,430

**SDOC Business Advisory Board
School Capital Outlay Surtax Revenue (1/2 Cent)
For the period ending 10/31/2022**

MONTH	Fiscal Year				
	2018 - 2019	2019 - 2020	2020 - 2021	2021 - 2022	2022 - 2023
July	\$ 3,247,344	\$ 3,306,679	\$ 2,707,399	\$ 4,233,071	\$ 3,224,214
August	2,362,698	2,454,871	1,882,705	3,005,749	3,278,521
September	2,107,519	2,186,347	1,675,718	2,424,595	2,877,151
October	2,906,958	2,945,535	2,964,929	3,958,839	4,801,845
November	2,183,394	2,346,396	1,911,260	2,621,067	
December	2,252,301	2,355,790	1,940,911	2,787,349	
January	3,545,302	3,683,419	3,485,166	5,332,327	
February	2,281,362	2,446,420	1,999,027	2,641,496	
March	2,321,866	2,474,997	2,045,878	2,917,219	
April	3,750,979	2,812,989	4,174,227	5,835,995	
May	2,496,898	1,116,246	2,805,030	3,344,635	
June*	2,420,032	1,461,649	2,731,593	5,106,584	
TOTAL	\$ 31,876,654	\$ 29,591,338	\$ 30,323,843	\$ 44,208,926	\$ 14,181,732

Budget	
Final Budget: Forecasted Revenue	\$ 35,000,000

Fund Balance	
Actual Fund Balance	\$ 102,899,994
Budgeted Fund Balance	\$ 32,701,867

*Accrual

**SDOC Business Advisory Board
Infrastructure Sales Surtax Revenue (1/4 Cent)
For the period ending 10/31/2022**

MONTH	Fiscal Year				
	2018 - 2019	2019 - 2020	2020 - 2021	2021 - 2022	2022 - 2023
July	\$ 1,626,416	\$ 1,653,542	\$ 1,353,919	\$ 2,120,111	\$ 1,612,100
August	1,187,951	1,229,646	940,105	1,503,529	1,639,932
September	1,051,985	1,094,544	838,579	1,212,424	1,438,628
October	1,460,827	1,473,660	1,482,953	1,979,577	2,401,219
November	1,094,073	1,173,745	954,858	1,311,662	
December	1,128,780	1,179,052	971,622	1,395,830	
January	1,774,559	1,842,450	1,742,835	2,667,069	
February	1,141,399	1,224,039	1,000,240	1,321,925	
March	1,164,505	1,237,741	1,023,877	1,458,896	
April	1,876,971	1,406,608	2,085,479	2,921,910	
May	1,251,681	558,604	1,405,131	1,679,869	
June*	1,213,361	731,997	1,365,888	2,553,311	
TOTAL	\$ 15,972,508	\$ 14,805,628	\$ 15,165,486	\$ 22,126,113	\$ 7,091,880

Budget	
Final Budget: Forecasted Revenue	\$ 17,500,000

Fund Balance	
Actual Fund Balance	\$ 39,421,509
Budgeted Fund Balance	\$ 12,193,817

*Accrual

**SDOC Business Advisory Board
School Capital Outlay Surtax Expenditures (1/2 Cent)
For the period ending 10/31/2022**

Type of Expenditure	Fiscal Year				
	2018-2019	2019-2020	2020-2021	2021-2022	2022-2023
Debt Service	\$ 7,037,194	\$ 7,035,848	\$ 7,779,523	\$ 15,090,580	\$ 13,821,903
Comprehensive Renovations					
Denn John Middle School	22,605,913	11,114,867	2,745,381	20,900	7,500
Gateway High School	71,765	388	756,836	3,799,685	3,408,179
Michigan Avenue Elementary School	19,720,411	1,735,726	1,152,483	-	7,420
Reedy Creek Elementary School			16,233	10,548	16,235
St. Cloud Middle School	2,417,580	23,942,794	8,923,615	-	-
Subtotal Comprehensive Renovations	\$ 44,815,669	\$ 36,793,775	\$ 13,594,548	\$ 3,831,132	\$ 3,439,334
Other maintenance & renovation projects					
Carpet Replacements/Flooring					
Adult Learning Center	\$ -	\$ -	\$ 36,153	\$ -	\$ -
Boggy Creek Elementary School		11,125.00			
Celebration K-8 School			127,599.00	167,707.00	
Chestnut Elementary School			188,853.00	110,489.00	
Cypress Elementary School			36,132		
Deerwood Elementary School		455,336			
Discovery Intermediate School	93,668	54,027			
East Lake Elementary School		42,221			
Harmony Community School			220,152	66,664	
Highlands Elementary					55,879
Kissimmee Middle School			71,809		
KOA Elementary		139,245	121,443		
Lakeview Elementary School				201,235	106,148
Mill Creek Elementary			155,704	158,838	
Narcoossee Elementary School			237,993	27,668	
Neptune Elementary School			16,107		
Parkway Middle School	149,780	139,035			
Poinciana Academy of Fine Arts	33,125				
Poincina High School			104,574		
Ross E. Jeffries Campus	53,648				
St Cloud Elementary		142	291,195		
Sunrise Elementary School		265,345	43,314		
Westside K-8		1,493			
Zenith	20,758		31,075		
Chiller Replacements/BAS:					
Boggy Creek Elementary School			138,423		
Celebration High School		1,068,923	232,029		
Central Elementary School		19,249	547,169		
Cypress Elementary School		214,067	391		
Discovery Intermediate School		223,357			
Flora Ridge Elementary School		235,421	290,548		
Horizon Middle School		205,514			
Kissimmee Elementary School	188,032	251,506			
Kissimmee Middle School	66,254				
Liberty High School	84,497	187,192			
Narcoossee Middle School			264,718	6,186	

**SDOC Business Advisory Board
School Capital Outlay Surtax Expenditures (1/2 Cent)
For the period ending 10/31/2022**

Type of Expenditure	Fiscal Year				
	2018-2019	2019-2020	2020-2021	2021-2022	2022-2023
oTECH				768	28,308
Partin Settlement Elementary School			492,135		
Poinciana Academy of Fine Arts	302,758	254,165			
Poinciana High School	4,695	2,644,442	206,953	900	
St. Cloud High School			355,666		
Fencing/Gates:					
Adult Learning Center			6,285		
Boggy Creek Elementary School	2,221				
Canoe Creek K8				1,382	
Celebration High School	833				
Celebration K-8 School	27,030				
Central Elementary School	8,952	557		7,431	
Cypress Elementary School		5,354			
Deerwood Elementary School		25,314			
Discovery Intermediate School			12,271		
East Lake Elementary School		41,773			
Flora Ridge Elementary School		29,083		15,922	
Gateway High School	12,815				
Harmony Community School	33,086				
Harmony High School	12,083	23,152			
Hickory Tree Elementary School	24,664				
Highlands Elementary	57,099	16,449	7,735		
Horizon Middle School	16,820				
Kissimmee Elementary School			24,628		
Kissimmee Middle School			6,911		
KOA Elementary				2,269	2,682
Lakeview Elementary School	53	42,148	12,883		
Liberty High School	16,194		16,333	5,996	
Michigan Avenue Elementary School			2,185		
Mill Creek Elementary		23,026	8,350	1,966	
Narcoossee Middle School	2,160				
Neptune Elementary School			10,504	4,103	
Osceola High School					1,537
Parkway Middle School			4,785		
PATHS		45,404			
Pleasant Hill Elementary School		2,251			
Poinciana Elementary School		27,326	16,746		
Poinciana High School	15,558				
Reedy Creek Elementary School	25,703	4,003	1,947		
Ross E. Jeffries Campus	42,173	375			
St. Cloud High School	107				
St. Cloud Middle School			1,101		
Tohopekaliga High School		16,544			
Westside K-8	36,355	913	4,806		
Zenith	4,787				32,927
HVAC Repairs/Replacements:					
Admin			68	5,398	
Celebration High School	56,322				

**SDOC Business Advisory Board
School Capital Outlay Surtax Expenditures (1/2 Cent)
For the period ending 10/31/2022**

Type of Expenditure	Fiscal Year				
	2018-2019	2019-2020	2020-2021	2021-2022	2022-2023
Celebration K-8 School	162,939	4,924			
Cypress Elementary School		7,894			
Deerwood Elementary School		7,758		77,785	
Harmony High School	3,162	4,478			
Horizon Middle School		152,730	1,891,622	867,237	29,820
Kissimmee Elementary School	20,586				
Kissimmee Middle School	66,487	152,541	1,906,674	868,821	29,745
Lakeview Elementary School				200,947	48,236
Liberty High School	117,555	35,347	3,006		
Narcoossee Middle School	100,827				
Neptune Middle School	3,002		11,798	38,998	
oTECH	60,133		35,865	120,219	1,945
Partin Settlement Elementary School				144,467	
Pleasant Hill Elementary School				47,264	
Ross E. Jeffries Campus	1,371	23,822			
Ventura Elementary School			38,971		
Painting /other projects (lighting, fans, windows, stage)					
ALCO	7,616	10,915			
Celebration High School	18,685	184,120		40,205	
Celebration K-8 School	21,296	47,509	38,093	64,347	
Central Elementary School			24,483	2,018	
Chestnut Elementary School				58,448	
Cypress Elementary School		41,882	89,846	27,147	
Deerwood Elementary School	52,714	47,301	12,471	18,783	
Discovery Intermediate School	114,620			365,165	187,306
East Lake Elementary School		40,144	9		
Flora Ridge Elementary School					77,059
Gateway High School	757				
Harmony Community School				72,400	
Harmony High School	17,710			13,168	
Hickory Tree Elementary School	21,668				
Highlands Elementary				58,000	
Horizon Middle School	18,138	41,517	15,693	43	
Kissimmee Elementary School		72,387		4,758	706
Kissimmee Middle School	217,910		64,550	6,807	10,009
KOA Elementary		35,446	31,806		
Lakeview Elementary School				638	82,473
Liberty High School	18,685			30,021	
Mill Creek Elementary		43,198	53,907		
Narcoossee Elementary School				59,150	
Narcoossee Middle School	21,828	64,586			
New Beginnings				52,000	
Osceola High School	18,685		9,000		
Osceola County School for the Arts	89,688				
oTECH		19,898			10,348
Parkway Middle School		44,462			
Pleasant Hill Elementary School			7,951		
Poinciana High School	13,333	247,884	1,487,487	26,230	289
Reedy Creek Elementary School	32,012				
St. Cloud Elementary School		67,113		3,661	
St. Cloud High School			162,424	22,650	

**SDOC Business Advisory Board
School Capital Outlay Surtax Expenditures (1/2 Cent)
For the period ending 10/31/2022**

Type of Expenditure	Fiscal Year				
	2018-2019	2019-2020	2020-2021	2021-2022	2022-2023
Sunrise Elementary School		225	61,352		
Ventura Elementary School		60,702			
Westside K-8	86,808				
Parking Lot/ Bus Loop/ Concrete /Drainage/ Field-Track					
ALCO			6,470		
Celebration High School			7,899		
Central Elementary School		8,429	6,707		
Countywide		7,929			
Deerwood Elementary School		19,712			
Harmony Community School		4,790			
Hickory Tree Elementary School		4,325			
Horizon Middle School		5,540			
Lakeview Elementary School		7,180	105,680		
Liberty High School		14,871	387,554		173,005
Narcoossee Elementary School		7,035	8,575		
Narcoossee Middle School		433	10,919		
Neptune Elementary School			7,357		
Osceola High School		15,615			
oTECH		1,850	10,579		
Parkway Middle School			7,914		
Poinciana Elementary	19,655				
Reedy Creek Elementary School			7,055		
Thacker Avenue Elementary	6,648				
Westside K-8		9,603			
Renovations/Playgrounds/Other					
Central Elementary School			47,425		
Deerwood Elementary School			59,000	40,704	
Horizon Middle School		8,023	7,380	123,520	
Lakeview Elementary School				3,970	
Mill Creek Elementary					136,105
Poinciana Elementary					136,323
Poinciana High School			72,754		
Reedy Creek Elementary School			25,600		
St Cloud Elementary			23,373		
Thacker Avenue Elementary				70,660	
Roofing/Gutters/Covered walkways:					
Boggy Creek Elementary School			4,709		
Chestnut Elementary	107,400				
Countywide			21,575		
Cypress Elementary School			4,918		
Discovery Intermediate School		9,082	93,272		
Kissimmee Elementary School	500	3,300			
Narcoossee Middle School		11,420	108,896		
Neptune Middle School	191,628	131,449			
Partin Settlement Elementary School	117,000				
Poinciana Elementary School	13,075	243,010			
Ross E. Jeffries Campus				136,870	4,734
Sunrise Elementary School	109,800				
St Cloud Elementary		59,597			
Safety & Security Equipment & software	701,003	519,017	1,140,922	805,392	557,588
Security Modifications and improvements	28,153	89,099	1,135,416	296,169	1,196
Technology Infrastructure and equipment	1,522,770	1,263,694	911,184	690,167	1,232,991
Subtotal Other	\$ 5,518,077	\$ 10,619,263	\$ 14,517,814	\$ 6,243,753	\$ 2,947,355
TOTAL	\$ 57,370,940	\$ 54,448,887	\$ 35,891,885	\$ 25,165,465	\$ 20,208,593

SDOC Business Advisory Board
Infrastructure Sales Surtax Expenditures (1/4 Cent)
For the period ending 10/31/2022

Type of Expenditure	Fiscal Year				
	2018-2019	2019-2020	2020-2021	2021-2022	2022-2023
Debt Service	\$ 6,551,233	\$ 6,561,298	\$ 6,568,081	\$ 6,576,731	\$ -
Other:					
Athletic Facilities	\$ 889	\$ 4,060	\$ -	\$ -	\$ -
Buildings - Transportation East				61,606	251,457
Buildings - Transportation West				354	376
Buses	219,747				4,500,000
Fuel Systems				269,981	
Remodeling	859,574	2,463			
Renovations - Canoe Creek		5,464,569	6,922,315	3,575,898	
Student Computers	249,600	118,972			
Site improvements	12,324			123,530	
Technology	160,573	7,001			
White Fleet	551,097	879,502	83,748	305,146	206,293
Subtotal Other:	\$ 2,053,804	\$ 6,476,567	\$ 7,006,063	\$ 4,336,515	\$ 4,958,126
TOTAL	\$ 8,605,037	\$ 13,037,865	\$ 13,574,144	\$ 10,913,246	\$ 4,958,126

Facilities Update



Every Child, Every Chance, Every Day!



Agenda

1. Facilities Program Update
2. Canoe Creek K8 – Cost Per Student Station
3. Elementary “A” New Construction – Celebration Island Village
4. Gateway High School - Comprehensive
5. Harmony High School - Updates
6. K8 School “CC” - Sunbridge
7. Osceola High School – FEMA Project
8. OCSA Stage – FEMA Project
9. SRES – Sunrise Elementary Car Rider Loop

Facilities Update

- Project Updates

• Projects in Pre-Planning	\$0
• Projects in Planning	\$8,000,000
• Projects in Design	\$465,340,751
• Projects in Construction	<u>\$233,592,685</u>
Current Program	\$706,933,436

Winter 2022 – Projects to be Completed

Facilities Update

- ❖ OCSA Flood Damage FEMA – 12/16/2022
- ❖ PWMS Performing Arts Doors – 12/08/2022
- ❖ OCSA Replace 3 Wheelchair Lifts – 03/23/2023
- ❖ NEOC Glass Repair FEMA – 12/09/2022
- ❖ NEOC Stairwell Door Magnets – 12/09/2022
- ❖ DWES Cell Tower – 12/16/2022
- ❖ TRANS KM Ice Maker Installation – 12/22/2022

CCNA Solicitations - Fall 2022

Facilities Update

- ❖ K8-DD (CM)
- ❖ HS-AAA (CM)
- ❖ Healthy Way/OCSA Bus Road (CM)

Projects in Planning

<u>Project</u>	<u>Budget</u>	<u>Proposed Opening</u>
OCSA Comprehensive Renovation	\$2,000,000	TBD
OCSA Healthy Way and OCSA Bus Route	\$4,000,000	TBD
RCES Comprehensive Renovation	\$2,000,000	TBD
TOTAL	\$ 8,000,000	

Projects In Design

<u>Project</u>	<u>Budget</u>	<u>Construction NTP</u>
NEOC Phase 2	\$25,500,000	03/13/2022
ADMIN Complex Drive-in Freezers	\$1,423,233	12/16/2022
NPES Additional Car Queuing	\$1,136,698	01/17/2023
Knightsbridge K8 School "BB"	\$66,688,351	02/15/2023
KMMS Network Cabling Replacement	\$1,000,000	03/13/2023
NCMS Space Reconfiguration	\$2,322,217	03/15/2023
SCHS Classroom Bldg. Addition	\$10,662,136	05/01/2023
Transportation East	\$22,207,016	05/01/2023
Roan Bridge K8 "DD"	\$83,793,156	10/01/2023
Kindred K8 School "AA"	\$83,793,156	12/01/2023
Transportation West	\$24,427,743	01/09/2024
Nova Road HS "AAA"	\$133,701,192	07/04/2024
CK8S Site Improvements	\$1,836,416	TBD
SCHS Synthetic Turf Stadium Field	\$2,397,304	TBD
<i>*Misc. Projects</i>	\$ 4,452,133	
TOTAL	\$ 465,340,751	

Projects in Construction

<u>Project</u>	<u>Budget</u>	<u>Substantial Completion</u>
OTECH Welding Program	\$3,500,000	07/29/2022
Sunbridge K8 School "CC"	\$68,979,729	11/23/2022
HRHS Space Reconfiguration	\$1,746,270	02/03/2023
HRHS Ag Bldg. Space Reconfiguration	\$1,062,255	03/10/2023
Elementary Celebration	\$40,933,164	05/15/2023
ADMIN 2000 Roof Replacement	\$1,261,132	07/11/2023
GWHS Comprehensive	\$111,823,113	07/26/2023
WK8S Kitchen & Serving Line Renovation	\$3,222,830	07/28/2023
<i>*Misc. Projects</i>	<i>\$ 1,064,192</i>	
TOTAL	\$ 233,592,685	

Map- Project Locations



<p>Capital Projects Location Map</p> <p>Updated: 10/13/2022</p> <p>Planning Services Department The School District of Osceola County, FL</p>	<p>Legend</p> <table border="0"> <tr> <td> Celebration Island K5 School "A"</td> <td> OCSA / Healthy Way</td> <td> Transportation West</td> </tr> <tr> <td> Kindred K8 School "AA"</td> <td> Roan Bridge K8 School "DD"</td> <td> St Cloud HS</td> </tr> <tr> <td> NeoCity HS</td> <td> Sunbridge K8 School "CC"</td> <td> Knightsbridge K8 School "BB"</td> </tr> <tr> <td> Nova Rd HS "AAA"</td> <td> Transportation East</td> <td> Reedy Creek ES</td> </tr> </table>	Celebration Island K5 School "A"	OCSA / Healthy Way	Transportation West	Kindred K8 School "AA"	Roan Bridge K8 School "DD"	St Cloud HS	NeoCity HS	Sunbridge K8 School "CC"	Knightsbridge K8 School "BB"	Nova Rd HS "AAA"	Transportation East	Reedy Creek ES	<p>Disclaimer: All data, information, and maps are provided "as is" without any warranty or representation of accuracy, timeliness, or completeness. The School District of Osceola County, Florida (the "School District") cannot accept any responsibility for errors, omissions, or positional accuracy. The School District specifically disclaims any warranty, either express or implied, including, without limitation, the implied warranties of merchantability and fitness for a particular purpose. The burden of determining accuracy, timeliness, merchantability, and fitness for a particular use rests solely on the requestor, and the requestor assumes all risk as to quality and performance. In no event will the School District or its staff be liable for any direct, indirect, incidental, special, consequential, or other damages, including, without limitation, loss of 21ft. arising out</p>
Celebration Island K5 School "A"	OCSA / Healthy Way	Transportation West												
Kindred K8 School "AA"	Roan Bridge K8 School "DD"	St Cloud HS												
NeoCity HS	Sunbridge K8 School "CC"	Knightsbridge K8 School "BB"												
Nova Rd HS "AAA"	Transportation East	Reedy Creek ES												

Canoe Creek K8 - CPSS

Total Student Stations	1447
FDEP CPSS Limit (2021)	\$25,504
Canoe Creek K8 CPSS	\$19,863
Difference	(\$5,641)

Elementary A- New Construction



Celebration Island Village E.S.
11.18.22



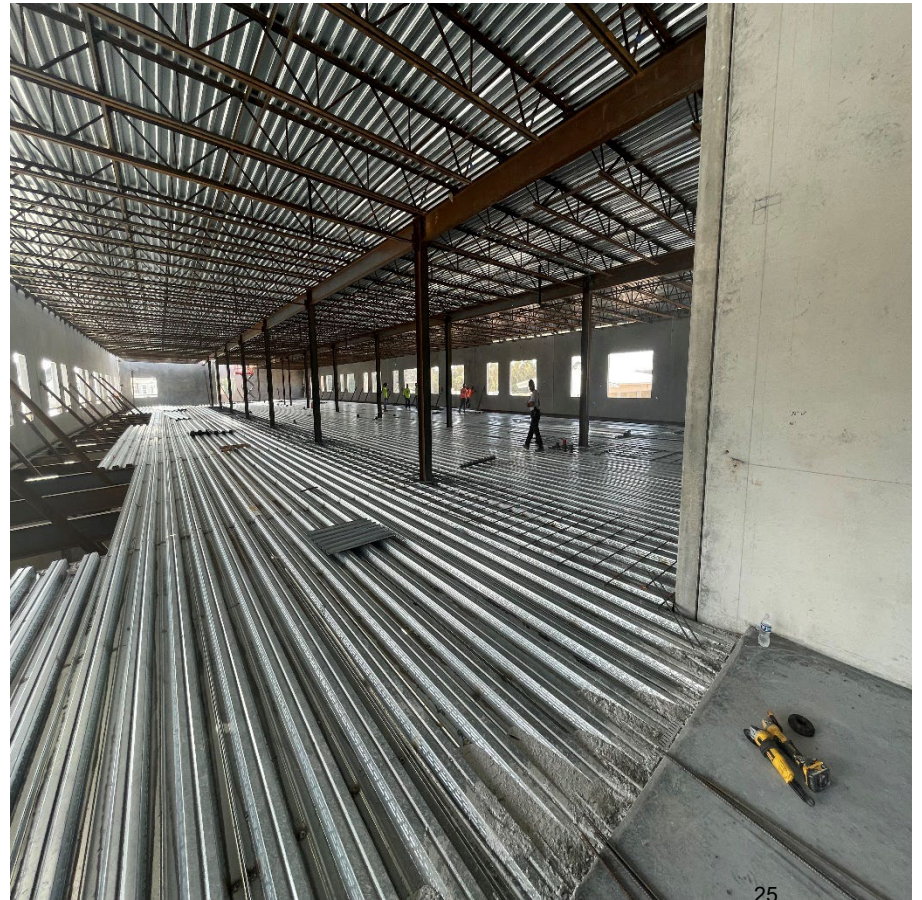
Elementary A- New Construction



Celebration Island Village E.S.
11.18.22



Elementary A – New Construction



Elementary A – New Construction



Gateway HS - Comprehensive



Gateway High School



27
12-02-22

Gateway HS - Comprehensive



Gateway HS - Comprehensive



Gateway HS - Comprehensive



Harmony HS – Ag Building



Harmony HS – Shade Structure



K8 School CC – Sunbridge



727.520.8181
www.aerophoto.com

Sunbridge K8

Image # 83
Date 11.29.22

33

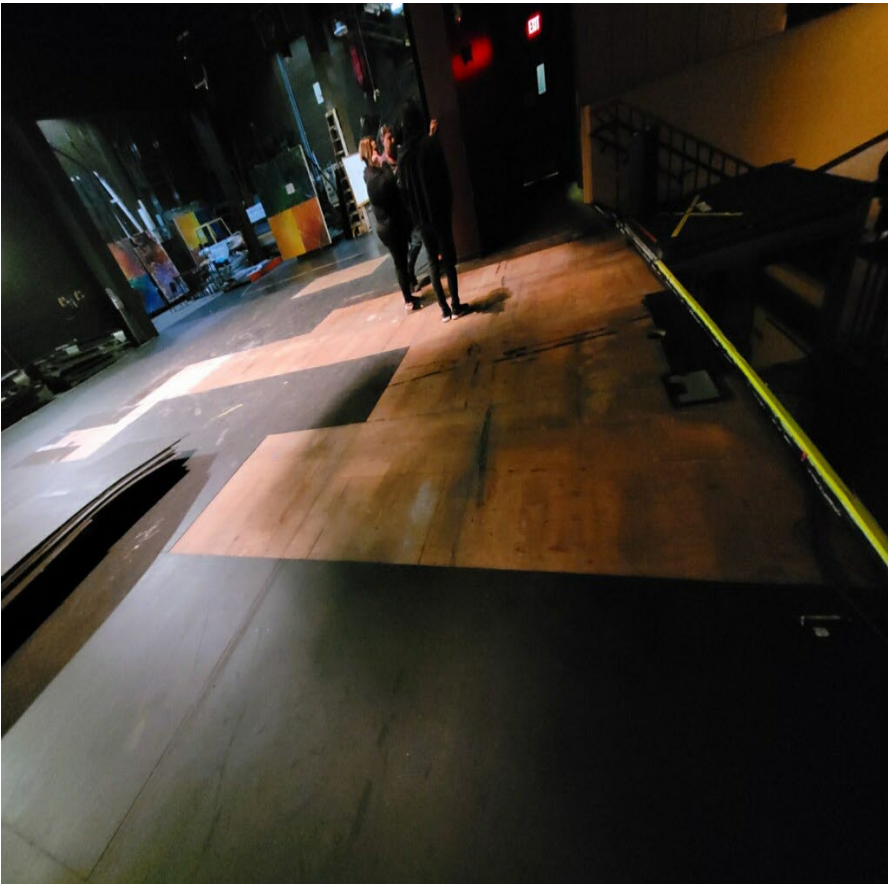
OCHS Flood Damage (FEMA)



OCHS Flood Damage (FEMA)



OCSA Flood Damage (FEMA)



SRES – Car Rider Loop



Every Child, Every Chance, Every Day!



Comments and Discussion